

A ZEST FOR LIFE

BIG BOLD & BRIGHT



SHINE LIKE A STAR

THE PAD LIVES AND BREATHS WITH YOU.

The Pad brings South Beach to Dubai. Tilted at a 6.5° angle, enveloped in LED lighting, the chic and sophisticated Pad is the pinnacle of super-glamorous condo living, the most striking building on the Creek, presiding over the Burj Khalifa and the sea.

During the day the unique facade shines and shimmers, reflecting the ethereal blend of sea, sun and sky. At night, this spectacular exterior blazes from hot to cool, from vibrant disco to the dark mystery and allure of desert stars.

With 253 sumptuously designed and furnished residences, a sparkling pool and gym, luxuriant gardens, The Pad is the most coveted address in Dubai.





GLOW!
ETOMI

AT THE HEART OF EVERYTHING THAT MATTERS!

The Pad is perfectly positioned, in the heart of Marasi Business Bay, and directly opposite to Meydan One, the new groundbreaking master development.

Thus, The Pad has the utmost desirable investment location, as it is central to both an ever-expanding business hub and a growing residential district.

PERFECTLY POSITIONED





LOCATION

THE THRILL OF THE WORLD'S BEST RESTAURANTS, INTRIGUING NEW CLUBS, VIBING BARS - JUST AROUND THE CORNER

The Pad is surrounded by a myriad of restaurants that cater to diverse tastes and inspirations, vibing bars, and a wonderland of shops.

A short 15 minute drive is all it takes to get you from the airport to your glamorous Pad home.

The Pad has convenient access to the Sheikh Zayed Road and the Al Khail Road, and is only a few minutes from Dubai's International Financial Centre (DIFC) and its Trade Center.



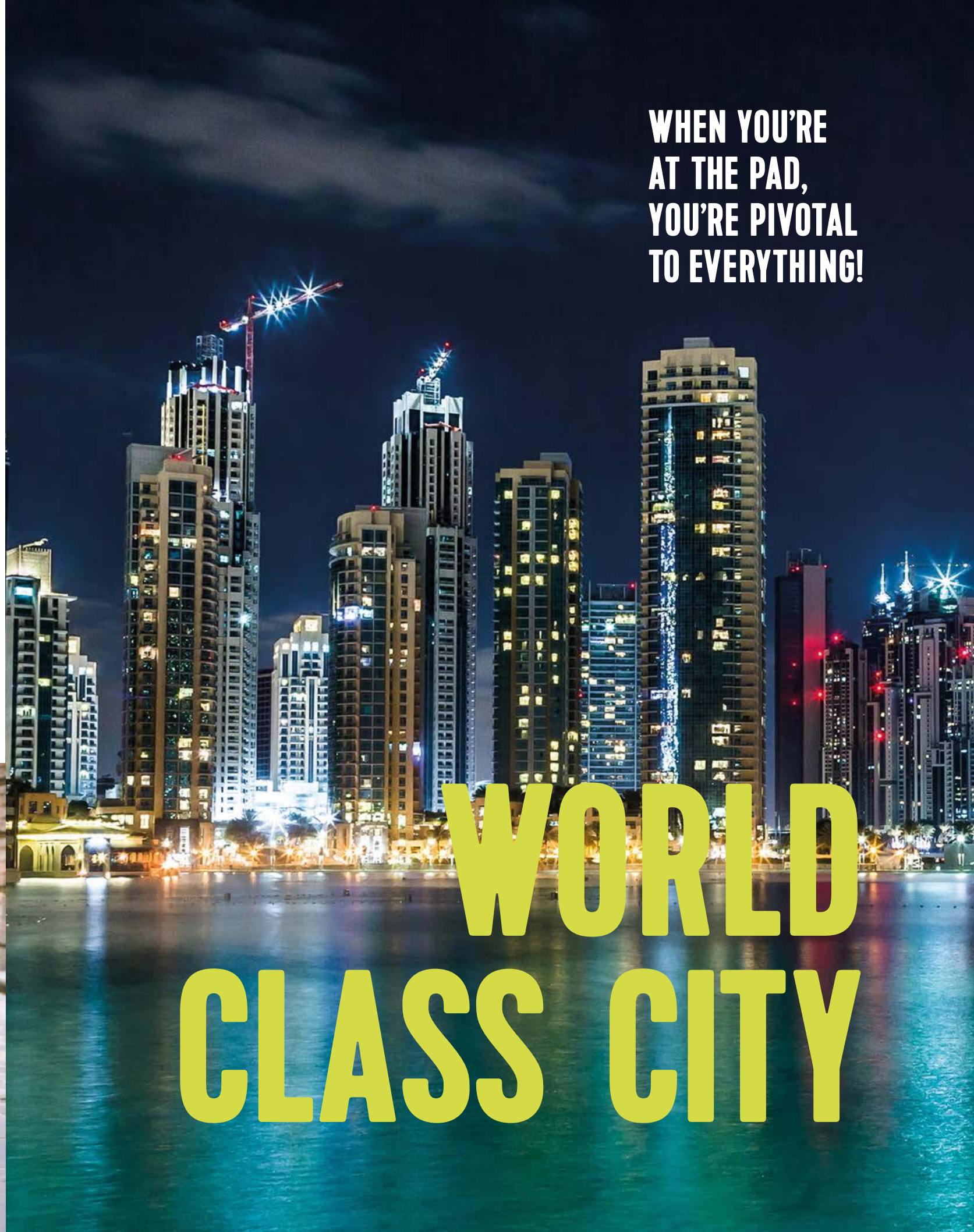
**FOR A DIP IN THE SEA,
THE STUNNING JUMEIRAH
BEACH IS JUST A HOP
AND A SKIP AWAY.**

For some serious shopping, Gucci, Prada, Dolce & Gabbana are all around the corner, at the biggest shopping centre in the world, the Dubai Mall.

And down the road you have the Souk al Bahar. Explore more than 1,500 eclectic shops and mingle with the Dubai crowd, or visit the fashionable Dubai Design District just across the road and discover a whole new world.



**WHEN YOU'RE
AT THE PAD,
YOU'RE PIVOTAL
TO EVERYTHING!**



**WORLD
CLASS CITY**

THE PAD

BY OMNIYAT





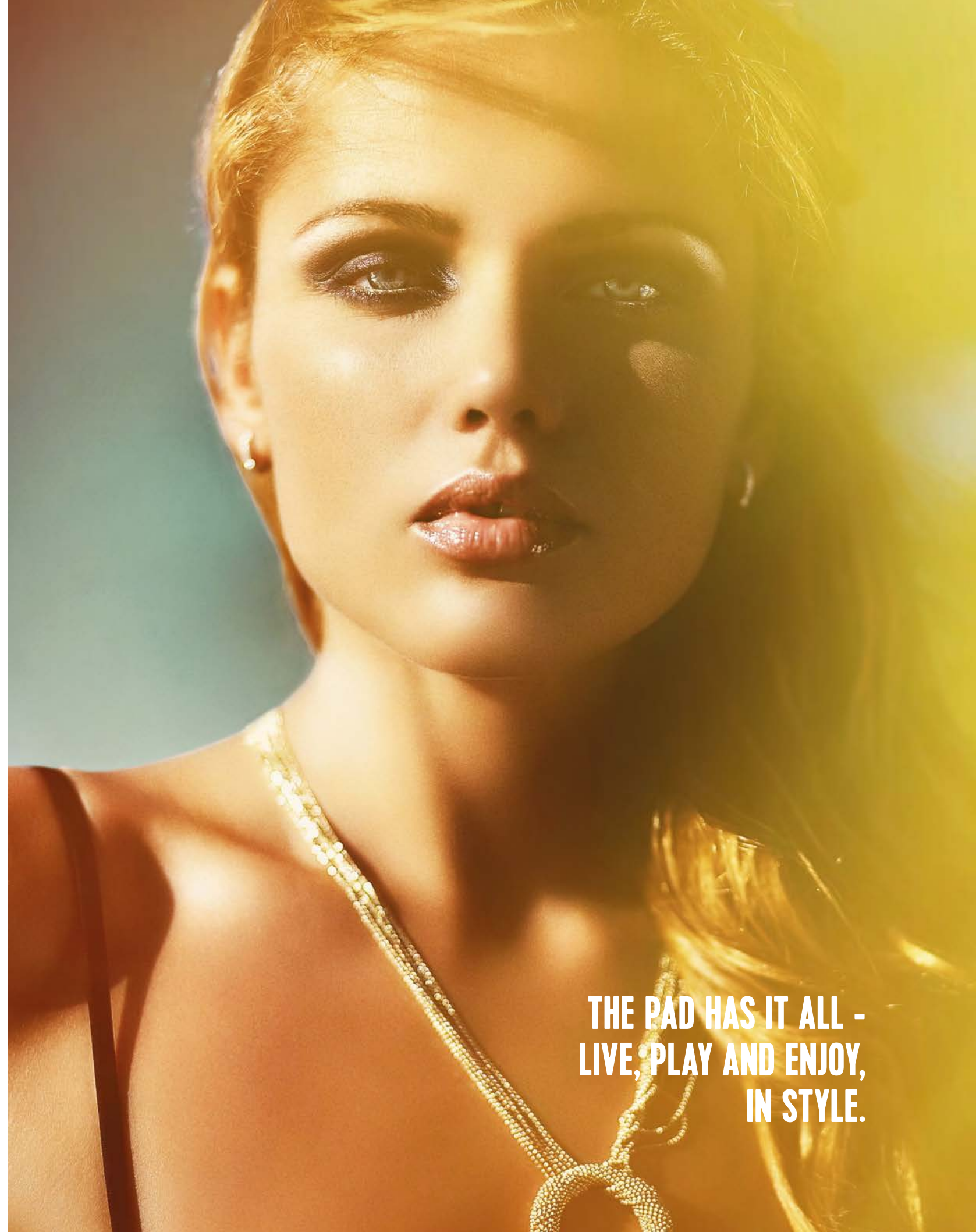
STRIKE A POSE

**THE PAD IS DESIGNED WITH SUMPTUOUS
AND STYLISH FURNISHED RESIDENCES.**

Artful open spaces emphasize passion, modernity and an innovative approach to condo living.

From one to two bedroom suites and lofts, as well as special terraced villa apartments, The Pad offers a range of units to satisfy all types and tastes of its guests and residents.

**THE PAD HAS IT ALL -
LIVE, PLAY AND ENJOY,
IN STYLE.**



ENTER A DREAM WORLD

**THE PAD'S LOBBY
DEFINITELY HAS A
HUGE WOW FACTOR
- THE STUNNING,
EXPERIENTIAL, DYNAMIC
AND ARTFUL VIDEO-WALL.**

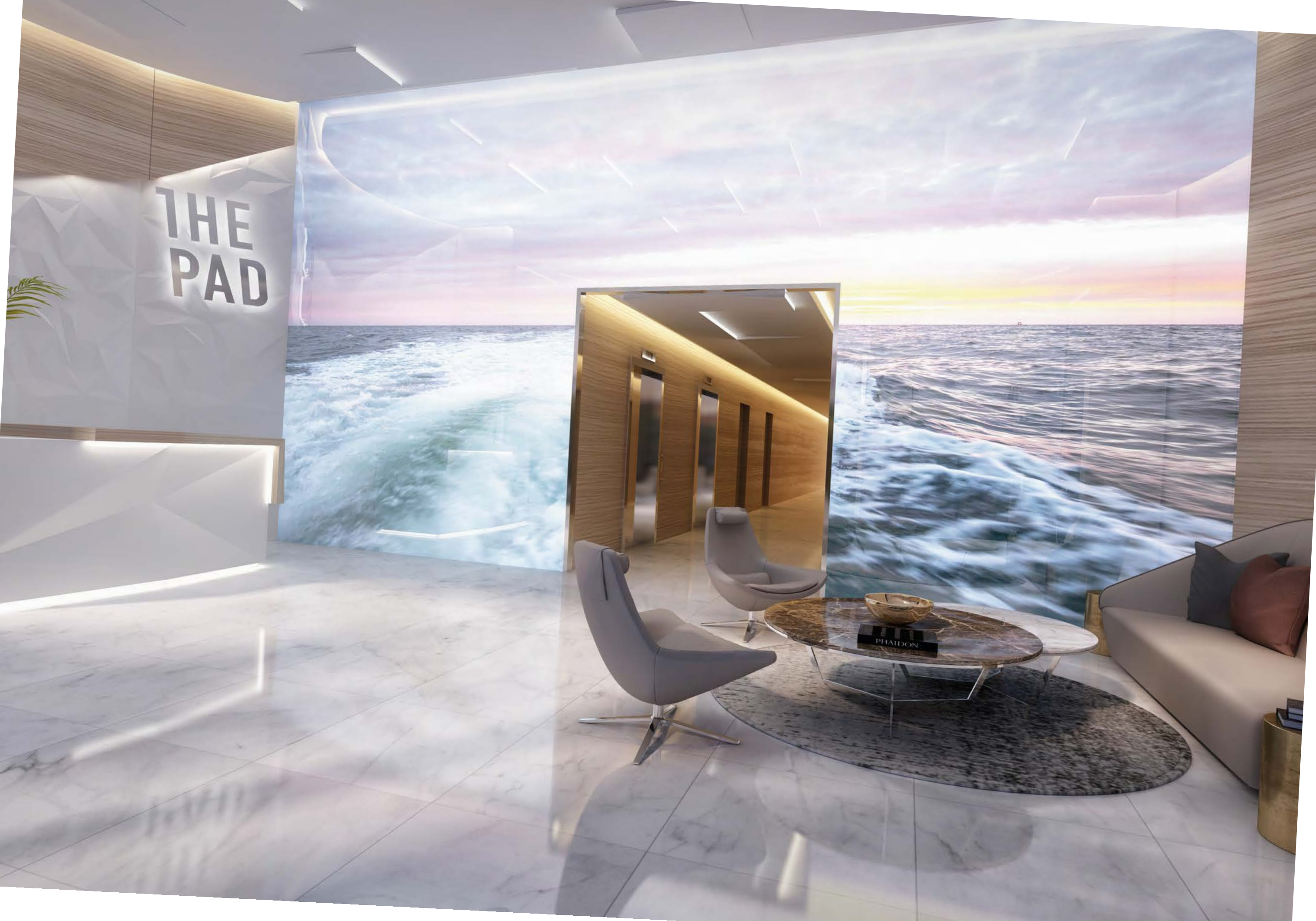
The Pad's lobby is not just a place you pass through, run into the elevator and zip up.

It's a place that welcomes you, embraces you. The video-wall captures and celebrates the beauty of Dubai's nature, creating the illusion of immersion - in turquoise waters, ebullient waves, frolicsome palm trees, desert sands and midnight blue skies.

It's an inspirational, engaging space, designed to correspond to the daily cycle.

It features relaxing imagery for the morning, more energetic scenery for noon and afternoon, a dynamic evening setting to get you pumped for the night ahead, and a "sweet dreams" backdrop to wish you a good night.





THE
PAD

PHALDON

UNIQUE PARADISE

**FEEL THE INCREDIBLE
ENERGY OF THE PAD'S
LIVING SPACES - TRENDY,
POSITIVE, COOL, VIBING.**

**Wake up and live your dream. Every
day. At The Pad.**

The stylishly furnished residences all come with glamorous furniture, sleek and smooth surfaces, inspirational artwork, the latest technology, an uber-smart home automation system, and a lot of clear, open space that allows you to feast your eyes on the sprawling views of the most stunning Dubai landmarks, such as the Burj Khalifa, the Dubai Creek, and Downtown Dubai.

