



Eden Hills Villas

Hadaeq Sheikh Mohammed Bin Rashid

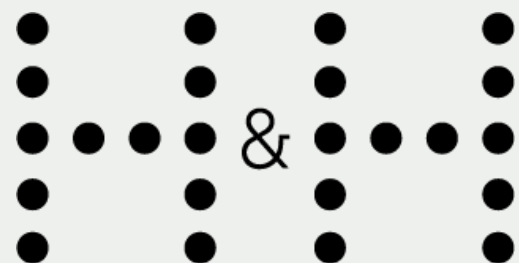




EDEN HILLS

EDEN HILLS VILLAS

Developed by



Mid-Level Rendering



A photograph of a forest path made of flat stones, winding through lush green ferns and trees. Sunlight filters through the canopy, creating a warm, golden glow. The path leads into the distance, surrounded by dense foliage and tall trees.

**I go to nature to be soothed
and healed, and to have my
senses put in order.**


John Burroughs



I am convinced that there can be luxury
in simplicity.

Jil Sander





What was wonderful
about childhood is
that anything in it
was a wonder. It was
not merely a world
of miracles, it was a
miraculous world.

Chesterton

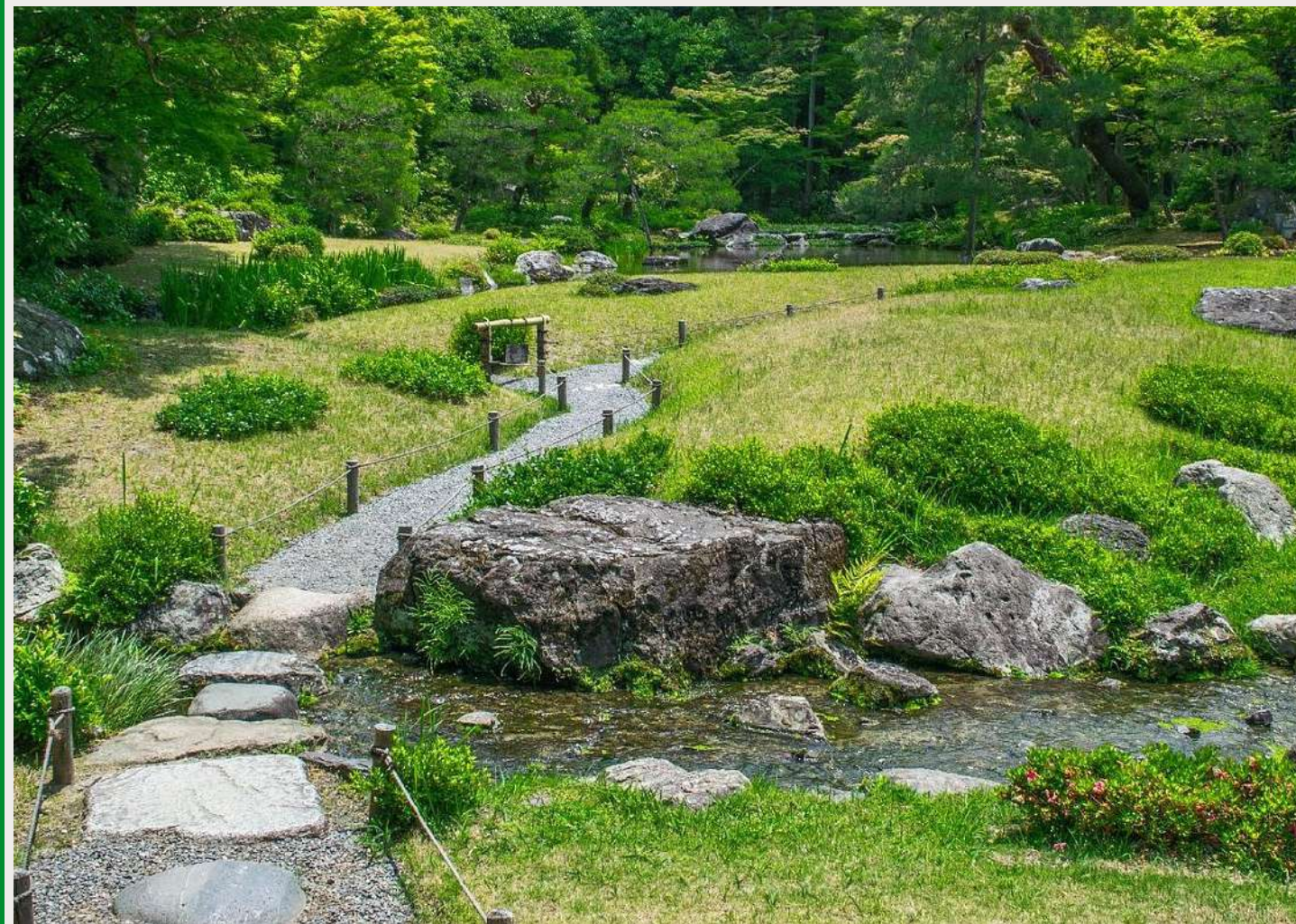


KEY CHARACTERS



Country Woodlands

- Rural Countryside Estates
- Gardens, Meadows and Woodlands
- Lush Landscape
- Organic, Scenic Roadways



Key Characters



Agrarian Ranch

- Rural agrarian plots
- Productive edible landscape
- Manicured, green landscape
- Orthogonal road form and patterning

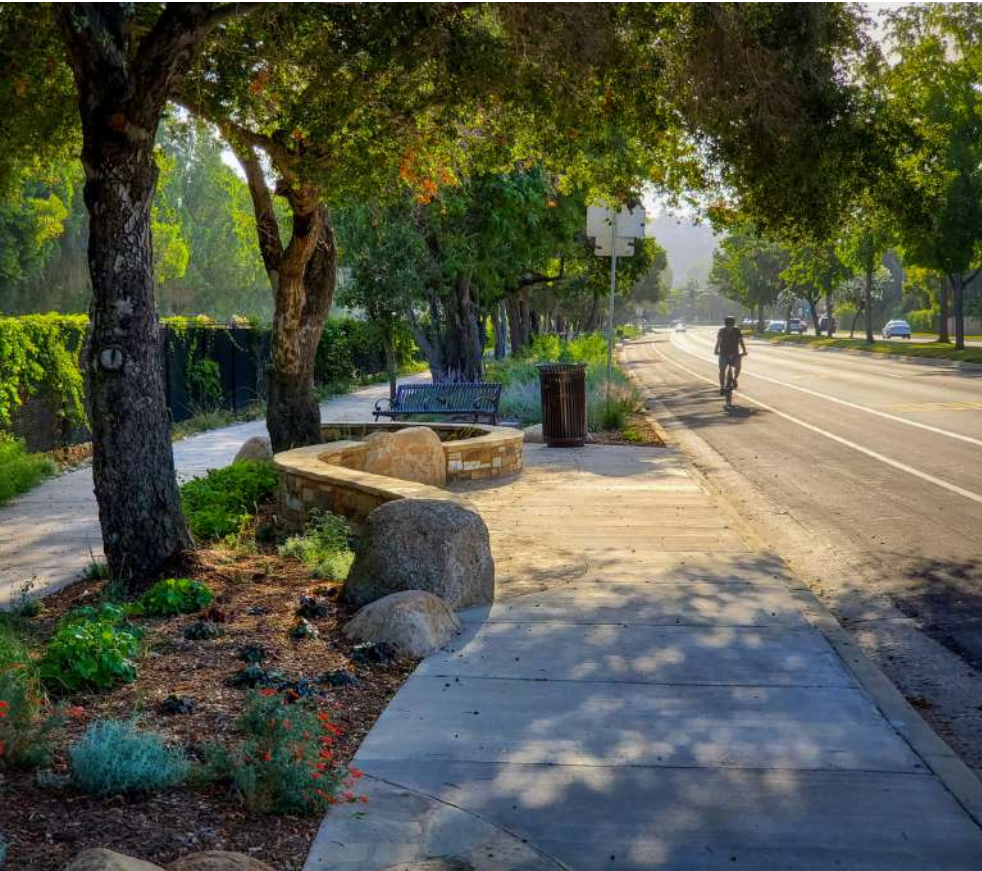


KEY CHARACTERS



- Gentle Rolling Terrain
- Heavy Vegetation in Canyons and Ravines
- Native Landscape
- Winding Roadways following the land form

24.4m Loop Road Landscape



Canyon Park Imagery



CHARACTER IMAGERY

Neighborhood Park Imagery



A woman with short blonde hair is sitting in a meditative lotus position on a forest floor covered with green ferns. She is wearing a white short-sleeved shirt and dark pants. Her eyes are closed, and her hands rest on her knees with palms facing up. Sunlight filters through the tall, thin trees of the forest, creating a peaceful and serene atmosphere. The background is filled with dense green foliage and tree trunks.

Forest Bathing Is the New Global Phenomenon in Nature Therapy

**Soak up the benefits of taking
in the forest atmosphere which
has been linked to promoting
physiological and psychological
health benefits like improved
memory and lower stress levels.**

Overall Rendering



Illustrative Plan

Legend

- ① Property Access
- ② Entry Guard Gate
- ③ Retail Parcel
- ④ Mosque
- ⑤ Central Canyon Park
- ⑥ Canyon Entry
- ⑦ Neighborhood Park
- ⑧ Linear Park
- ⑨ Primary Loop Road
- ⑩ Sikka
- ⑪ Gas Farm
- ⑫ Utility Plot



Canyon Park Illustrative



ILLUSTRATIVE PLAN

Landscape Framework

1 STREETScape

- The arrival will consist of linear rows of date palms intermingled with large canopy trees as well as the opportunity for a public art setting
- The loop road will consist of a variety of canopy trees and groups of washingtonia palms which will accent the points of access into the canyon park
- Canopy trees both flowering and evergreen with planted understory along all neighborhood streets

2 OPEN SPACE & PARKS

2a CANYON PARK

- Vast trail system connecting pedestrian walkability throughout entire development. Seating areas will take on multiple forms, from stone outcroppings and terraced walls, to terraformed landscape and site furnishing.
- Variety of foliage color and texture among constant flowing streams and boulders.
- Flanked by the borders of adjacent properties and terracing retaining walls that drop down into the valley of the park.
- Canyon Park will be identified with clear signage and wayfinding at each entry meeting the loop road, and to guide pedestrians through the trail network - highlighting the different activities within the canyon.




2b LINEAR PARK

- A park pathway that winds through the lush landscape of dense tree canopies alongside the entire loop road.
- Seating areas along park route approximately every 50m & multiple connections to Canyon Park with appropriate signage and wayfinding.
- Opportunities for public art at significant locations near the main entrance and canyon entrances.

2c NEIGHBORHOOD PARKS

- Picnic shade pavilions
- Kids play structures
- Dog play area
- Open grass areas
- Layered planting and canopy shade trees

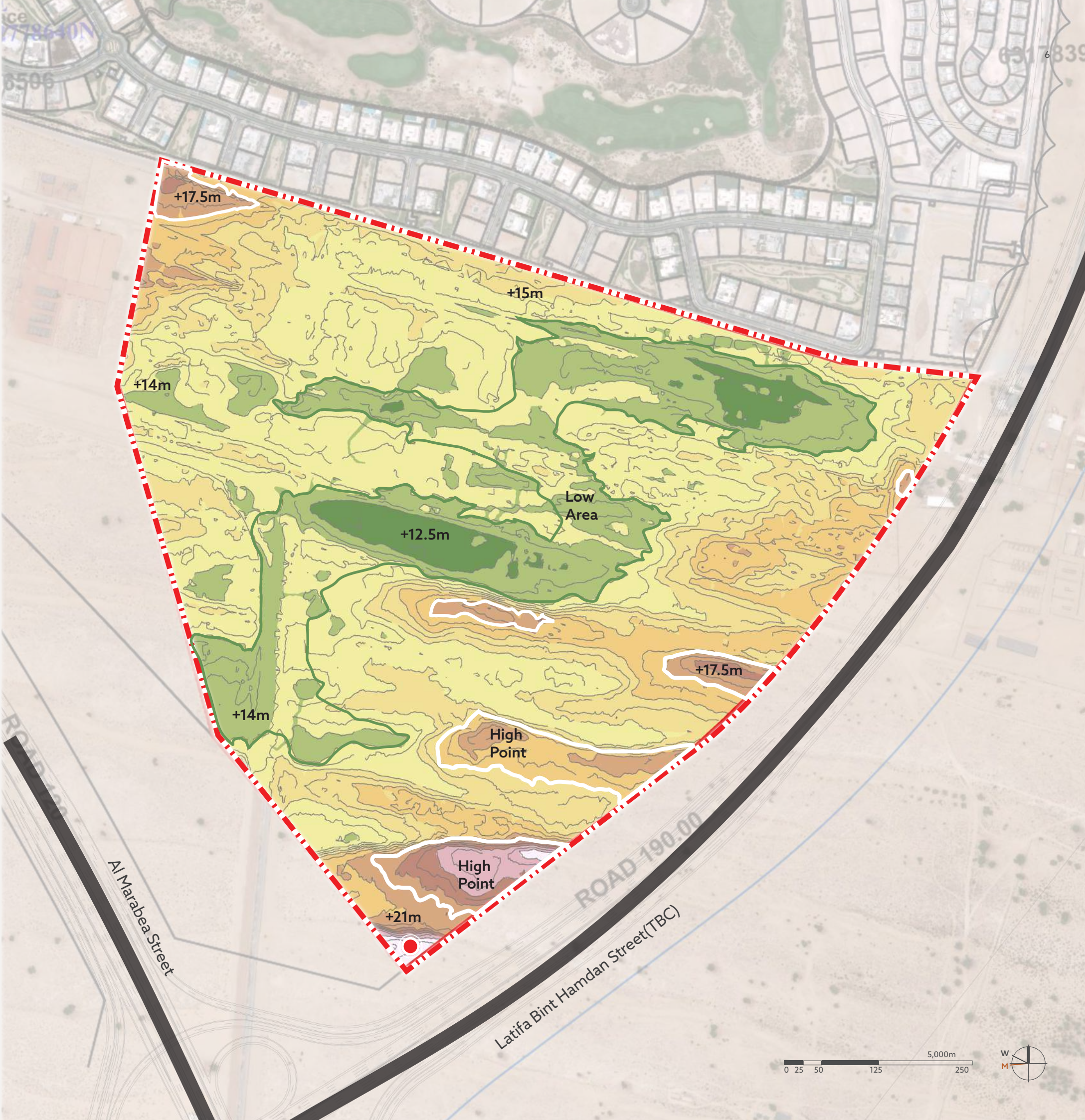
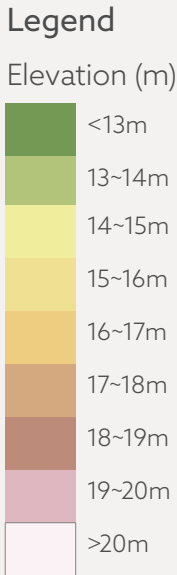
Legend

-  Trails
-  Vehicular Road
-  Open Space



Elevation Analysis

The existing site is very developable, with easy flowing topography caused by gentle rolling sand dunes. The entire site falls between 12m and 22m. The highest point of the existing site sits in the southernmost corner at 21m. A 17.5m high point lies across the site at the northwest corner. A low area runs through the center of the site in a serpentine pattern from southwest to northeast. The lowest point falls near the center of the site at 12.5m.



EDEN HILLS PLOTS



- RESIDENTIAL VILLA - A1 (6BR)
- RESIDENTIAL VILLA - A2 (6BR)
- RESIDENTIAL VILLA - B (4BR)
- RESIDENTIAL VILLA - C (5BR)
- RESIDENTIAL VILLA - D (5BR)
- COMMERCIAL
- PUBLIC FACILITY
- RECREATIONAL / OPEN SPACE
- UTILITY
- UTILITY CORRIDOR / ACCESS
- PROJECT LIMIT

EDEN HILLS PLOTS

- RESIDENTIAL VILLA - A1 (6BR)
- RESIDENTIAL VILLA - A2 (6BR)
- RESIDENTIAL VILLA - B (4BR)
- RESIDENTIAL VILLA - C (5BR)
- RESIDENTIAL VILLA - D (5BR)
- COMMERCIAL
- PUBLIC FACILITY
- RECREATIONAL / OPEN SPACE
- UTILITY
- UTILITY CORRIDOR / ACCESS
- PROJECT LIMIT




Eden Hills Plots

Plot No	Unit Type	Land Area Sqft	GFA Sqft	Height	FAR	Price	Availability
EH-V-290	D-5BR (30*40)	15,475.62	11,607.00	B+G+2	0.75	AED29,364,985.31	Available
EH-V-291	D-5BR (30*40)	14,857.23	11,143.00	B+G+2	0.75	AED28,191,586.87	Available
EH-V-292	A2-6BR (35*40)	20,194.88	17,166.00	B+G+2	0.85	AED38,319,782.14	Available
EH-V-293	A2-6BR (35*40)	18,073.94	15,363.00	B+G+2	0.85	AED34,295,301.23	Available
EH-V-294	A1-6BR (40*50)	24,179.39	20,552.00	B+G+2	0.85	AED48,661,019.32	Available
EH-V-295	A1-6BR (40*50)	21,528.00	18,299.00	B+G+2	0.85	AED40,849,380.00	Available
EH-V-296	A1-6BR (40*50)	21,705.61	18,450.00	B+G+2	0.85	AED43,682,532.08	Available
EH-V-297	A1-6BR (40*50)	25,922.51	22,034.00	B+G+2	0.75	AED52,169,052.66	Available
EH-V-298	A2-6BR (35*40)	23,979.93	20,383.00	B+G+2	0.85	AED48,259,612.26	Available
EH-V-299	A2-6BR (35*40)	15,207.49	12,926.00	B+G+2	0.85	AED28,856,206.28	Available
EH-V-300	A2-6BR (35*40)	15,086.39	12,823.00	B+G+2	0.85	AED28,626,428.52	Available
EH-V-301	D-5BR (30*40)	12,916.80	9,688.00	B+G+2	0.75	AED18,553,691.52	Available
EH-V-302	D-5BR (30*40)	12,916.80	9,688.00	B+G+2	0.75	AED18,111,936.96	Available
EH-V-303	D-5BR (30*40)	12,623.91	9,467.94	B+G+2	0.75	AED18,133,141.18	Sold
EH-V-304	D-5BR (30*40)	12,730.91	9,548.23	B+G+2	0.75	AED18,286,827.59	Sold
EH-V-305	D-5BR (30*40)	12,916.80	9,688.00	B+G+2	0.75	AED18,111,936.96	Available
EH-V-306	D-5BR (30*40)	12,916.80	9,688.00	B+G+2	0.75	AED18,553,691.52	Available
EH-V-307	D-5BR (30*40)	12,916.80	9,688.00	B+G+2	0.75	AED18,553,691.52	Available
EH-V-308	D-5BR (30*40)	12,916.80	9,688.00	B+G+2	0.75	AED18,111,936.96	Available
EH-V-309	D-5BR (30*40)	12,727.57	886.82	B+G+2	0.75	AED18,282,034.55	Sold
EH-V-310	D-5BR (30*40)	17,136.40	12,852.00	B+G+2	0.75	AED24,614,718.70	Available
EH-V-311	D-5BR (30*40)	16,577.42	12,433.00	B+G+2	0.75	AED23,811,807.70	Available

EDEN HILLS

Eden Hills Payment Plan	
On Booking	25% + 4%
SPA Signing (Within 30 Days)	
6 Months After SPA	25%
12 Months After SPA	25%
On Handover	25%

A young boy and girl are crouching on a dirt bank next to a shallow stream. The boy, in the foreground, is wearing a purple patterned shirt and grey pants, and is pointing towards the water. The girl, behind him, is wearing a striped shirt and blue pants. They are both looking intently at something in the water. The background is a lush green forest with tall grass and yellow wildflowers.

**You will find something
more in woods than
in books. Trees and
stones will teach you
that which you can never
learn from masters.**

Saint Bernard of Clairvaux