

*DAMAC*

CHIC

TOWER

de GRISOGONO

GENEVE



R E A W A K E N L U X U R Y

***DAMAC***



REAWAKEN LUXURY

# TURQUOISE, REIMAGINED.



Inspired by the healing properties of turquoise, Chic Tower is where wellness and opulence meet.

Here, the fabled fountain of youth is recast as a holistic lifestyle experience which brings together restorative baths, beauty treatments, state-of-the-art gymnasiums, residential luxury, and master-jeweller de Grisogono's unique interpretation of one of the world's most beloved gemstones.







REAWAKEN LUXURY

YOUTH,  
RECLAIMED.



Why settle for being young at heart?  
At Chic Tower, 7 revitalising baths have been  
designed to extract toxins from your body and  
help your skin glow with the radiance of youth.

From hot baths and cold baths to salt baths and  
mud baths, a unique tonic to life's wear and tear  
awaits you each day of the week.







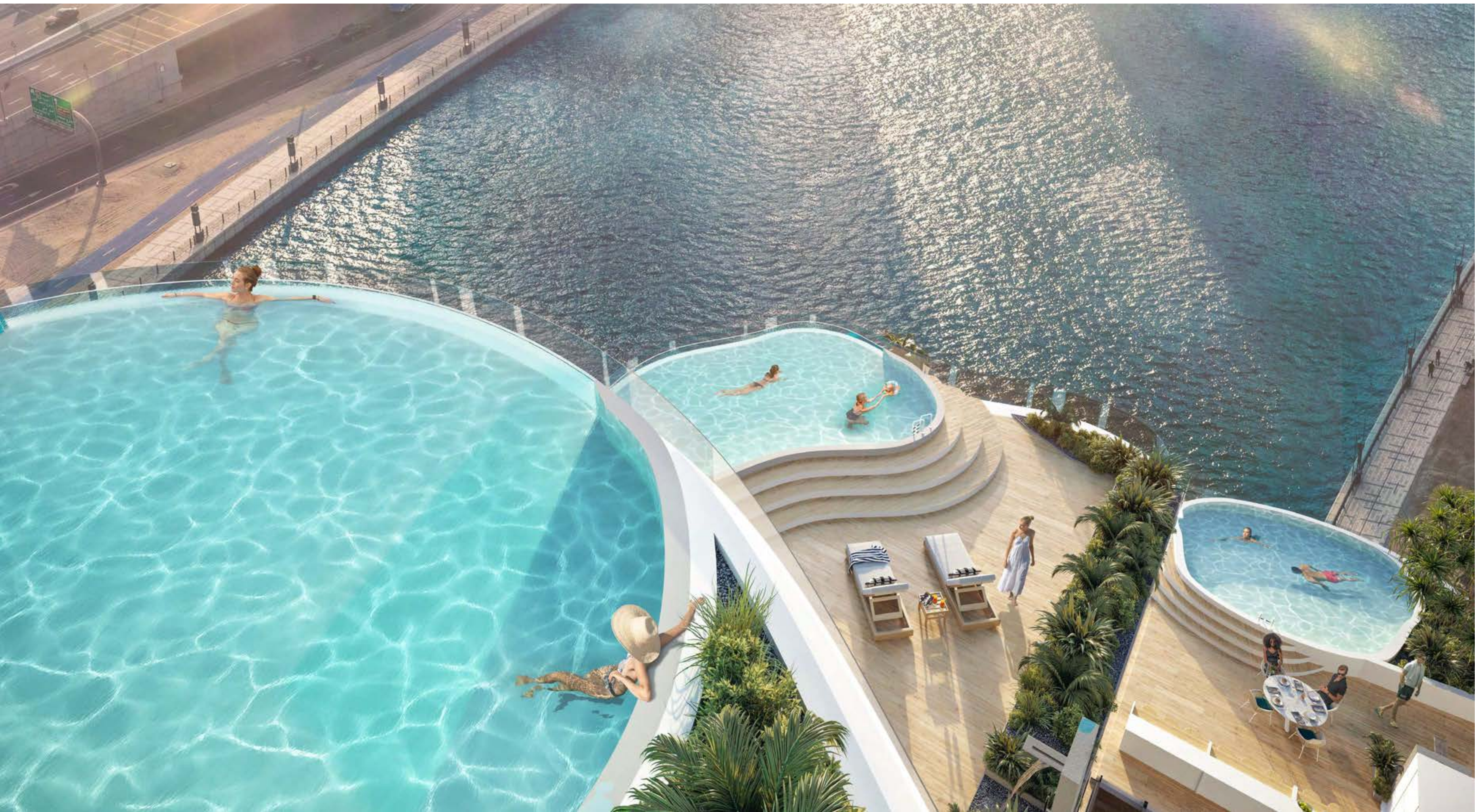
REAWAKEN LUXURY

VIEWS,  
REDISCOVERED.



At Chic Tower, you meditate with your eyes closed. But you enjoy the view with eyes full of wonder. Your home boasts sweeping panoramas of the iconic Dubai Canal and beyond, allowing you to revitalise your perspective on life, every time you look out of your window.

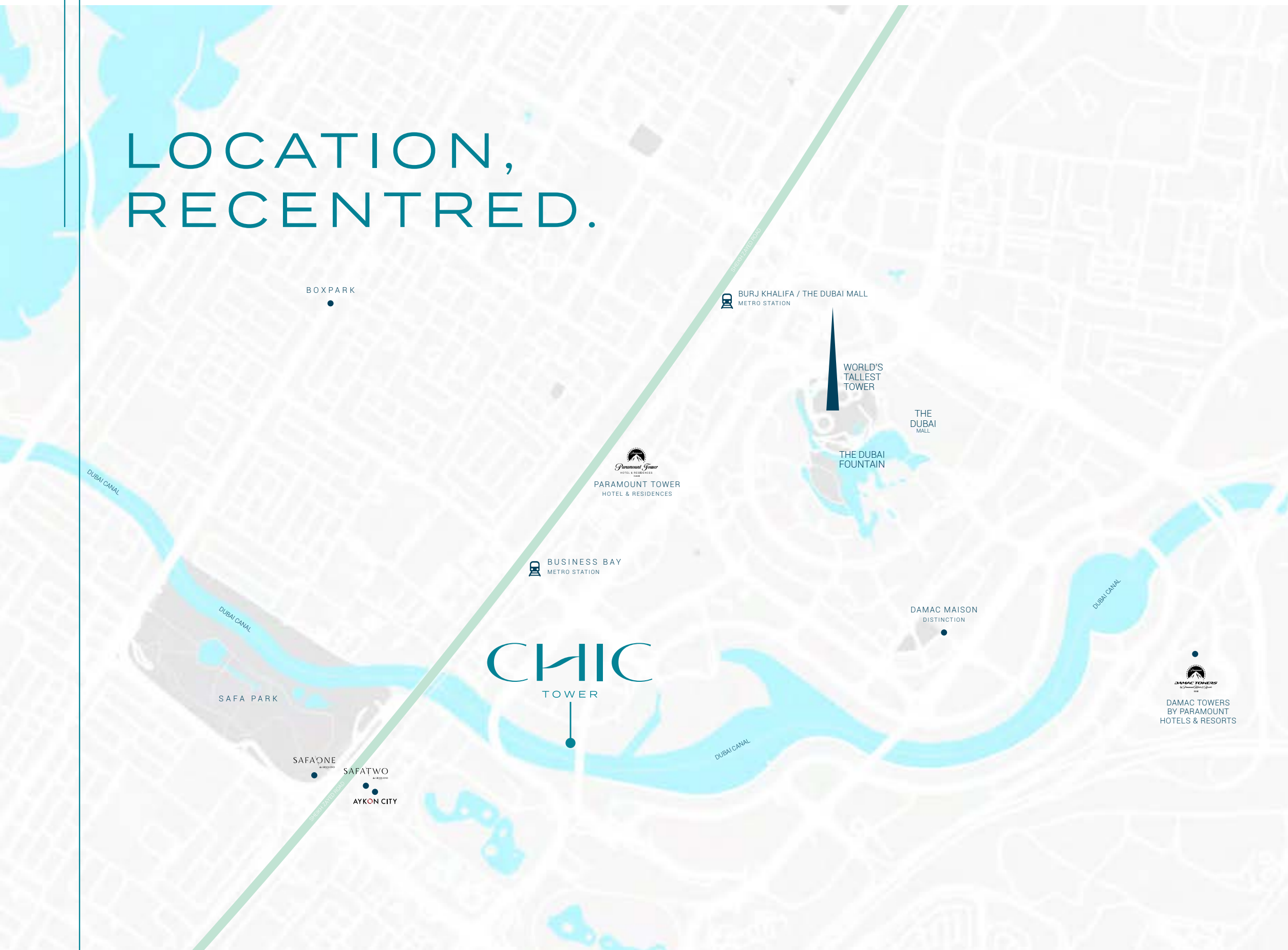




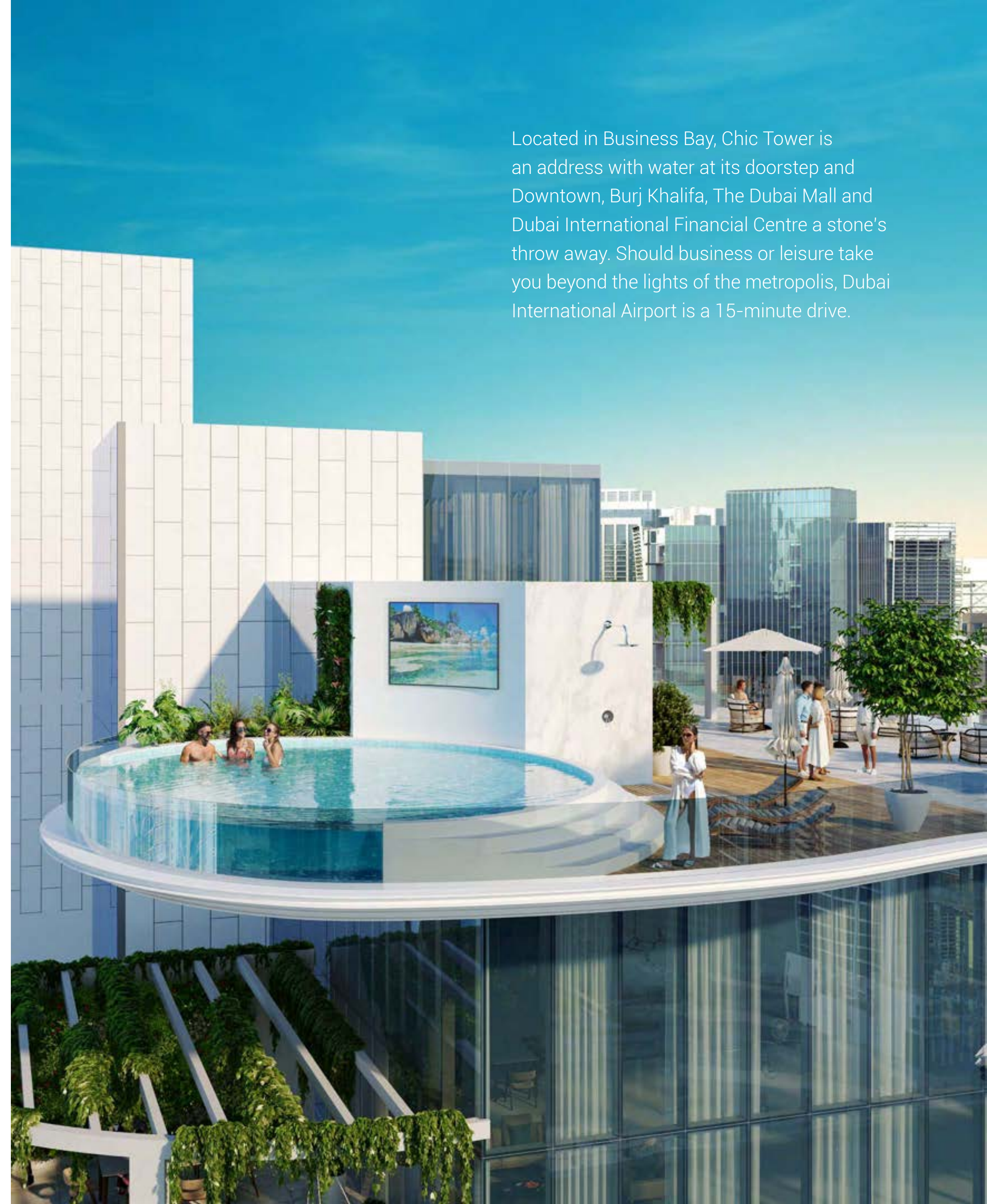


REAWAKEN LUXURY

## LOCATION, RECENTRED.



Located in Business Bay, Chic Tower is an address with water at its doorstep and Downtown, Burj Khalifa, The Dubai Mall and Dubai International Financial Centre a stone's throw away. Should business or leisure take you beyond the lights of the metropolis, Dubai International Airport is a 15-minute drive.





R E A W A K E N

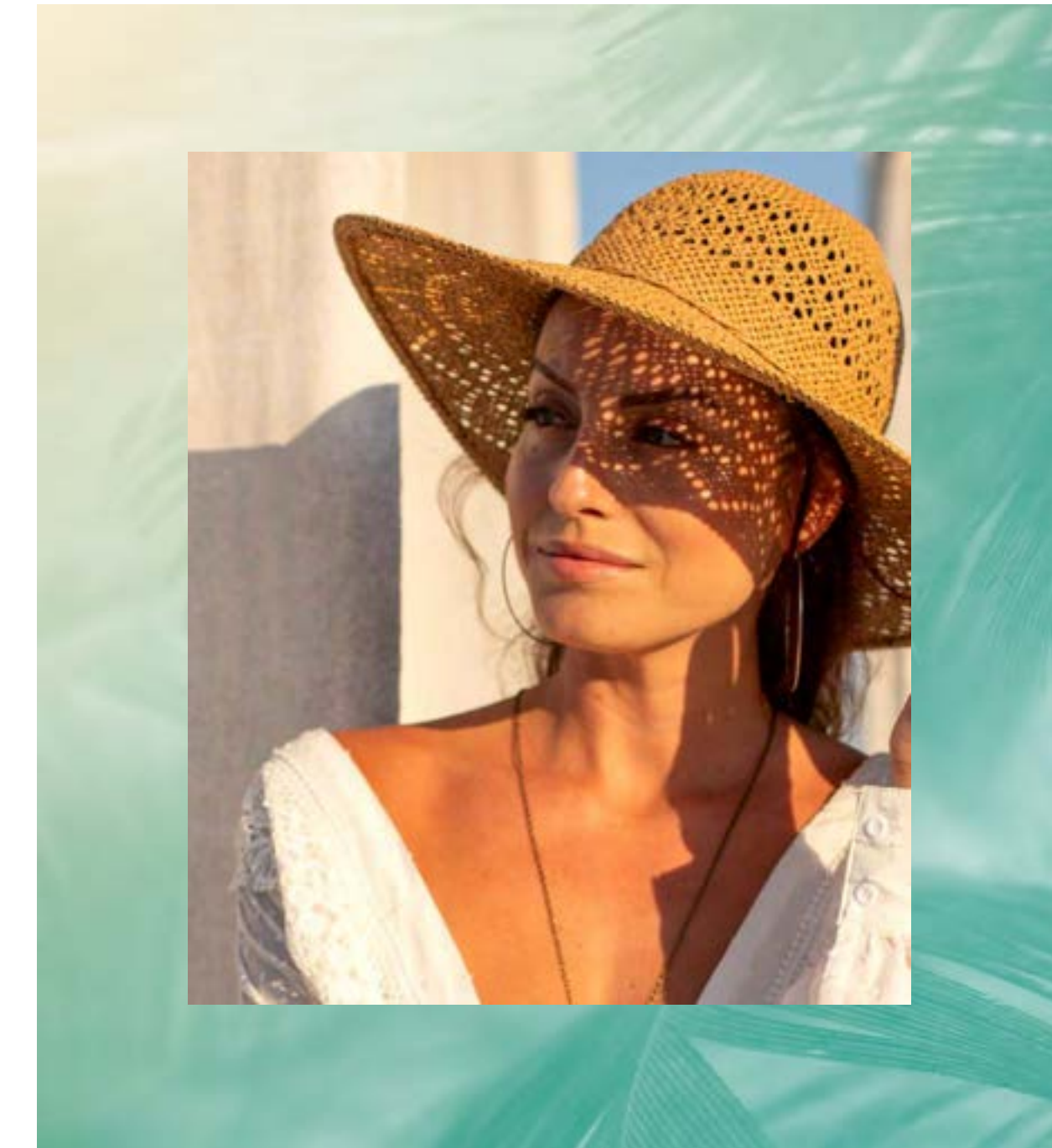


L U X U R Y



REAWAKEN LUXURY

WELLNESS,  
RESTORED.



Chic Tower invites you to remain healthy from the moment you walk through the door, where the lobby greets you with workout benches and weights. On the Podium level, the main spa extends into an outdoor gym, designed to strengthen all muscle groups with callisthenic-focused equipment and training.





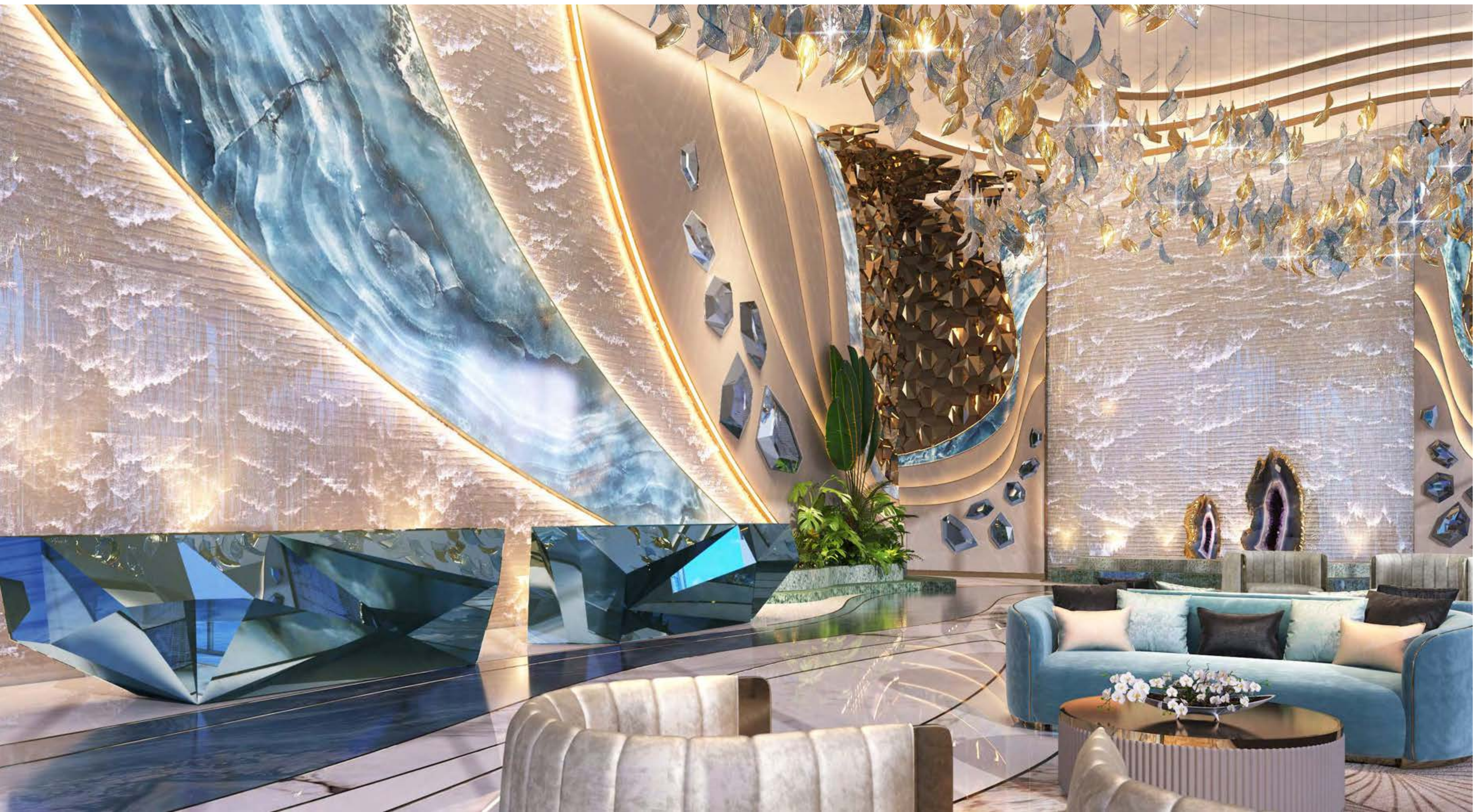


R E A W A K E N



L U X U R Y







REAWAKEN LUXURY

BEAUTY,  
REVIVED.

The secret to staying young continues at our beauty bar. A Dubai first, this is where custom-made creams are developed by our beauty technicians to answer the specific needs of your skin type. At Chic Tower, the aura of youth which surrounds you is yours, and yours alone.



R E A W A K E N



L U X U R Y



REAWAKEN LUXURY

WATER,  
REDEFINED.

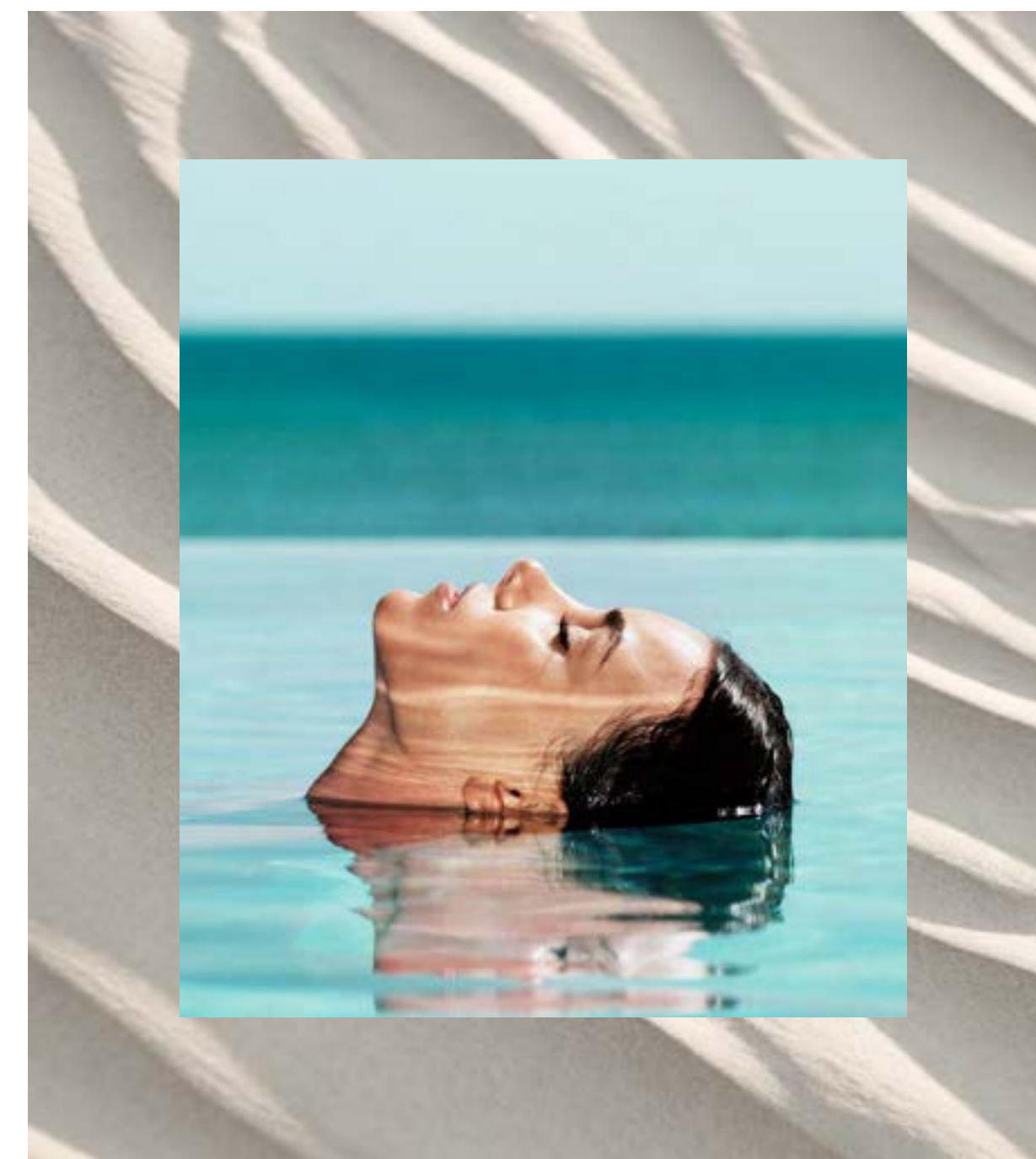
Baths and pools. Beauty and juice bars. Spas and gyms. Cabanas and playgrounds. Football arenas and party zones. What more could the Podium level at Chic Tower possibly offer? A meandering, 180 metre-long lazy river: the perfect way to drift into a world as tranquil as the water that laps ever-so-gently around you.







REAWAKEN LUXURY

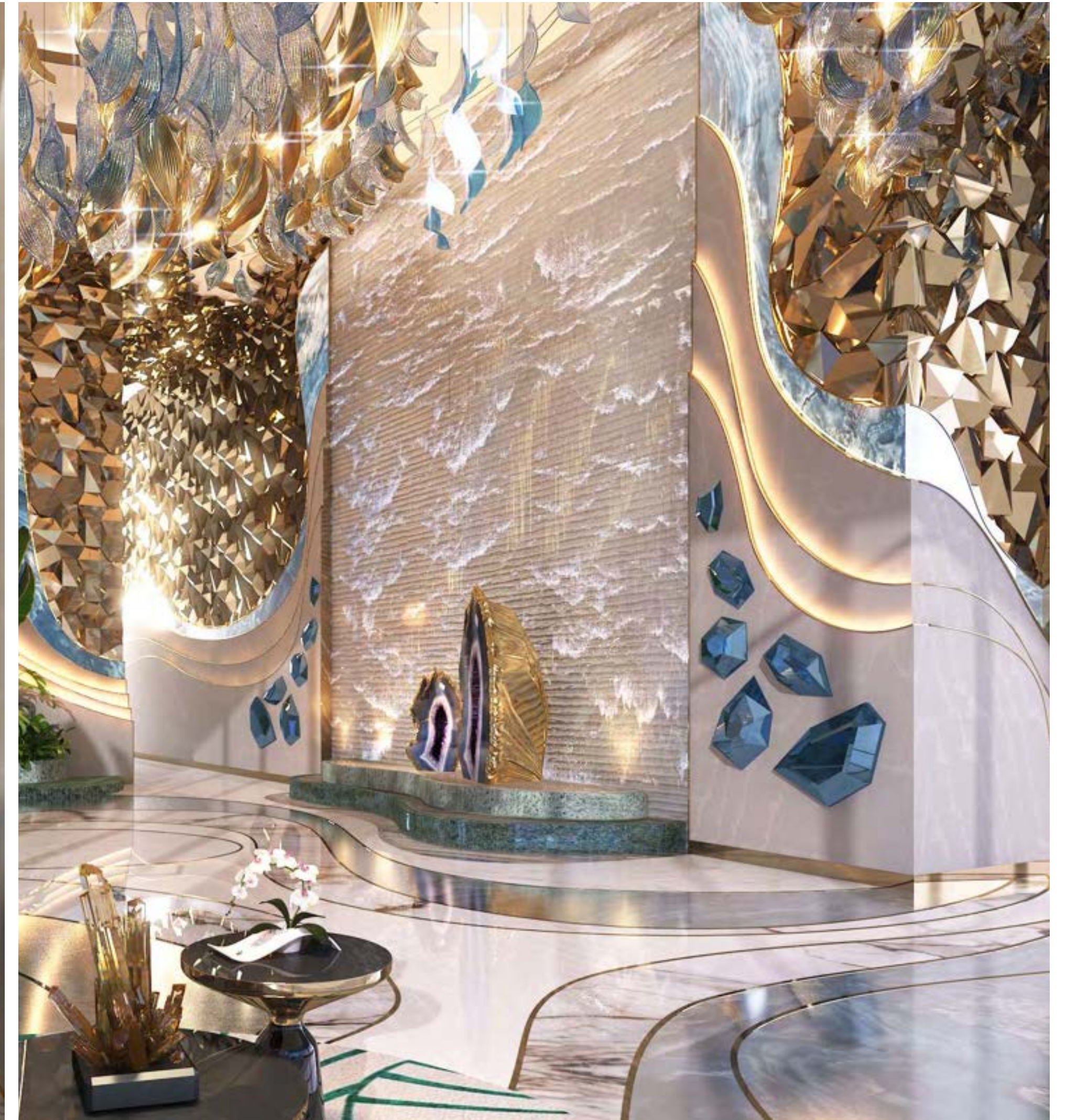


## WAVES, RECREATED.

Look up from the Podium and take in the full beauty of the Tower you now call home. A cascade of undulating terraces inspired by the waves of Dubai Canal descend from the buildings crowning glory - a stepped roof which evokes layers of rock, where water trickles from one pool to another.

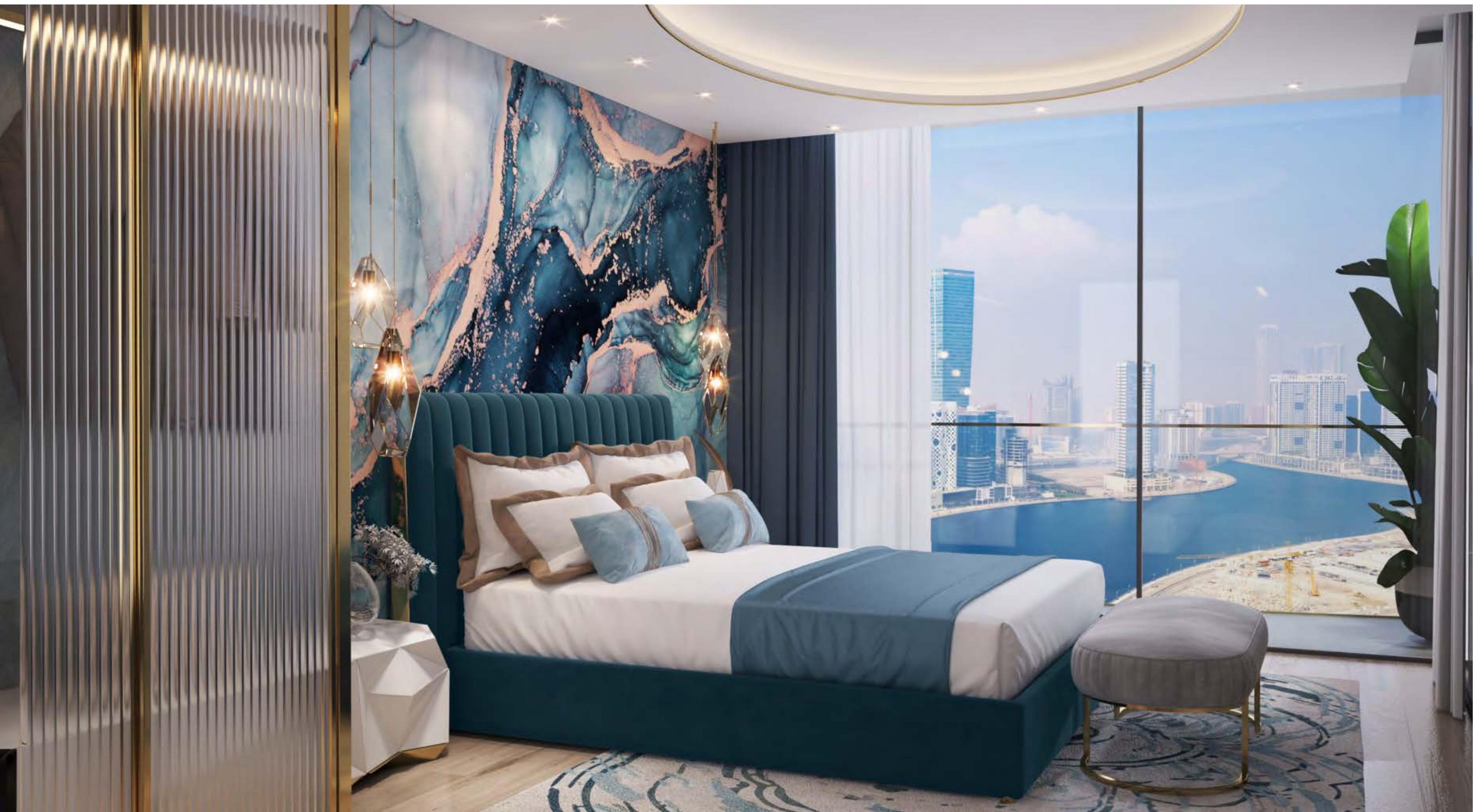


R E A W A K E N



L U X U R Y







REAWAKEN LUXURY

HOME,  
REINVENTED.



Whether you live in a studio, 1 or 2 bedroom or super luxury home, every habitable inch of Chic Tower has been designed with your wellbeing in mind and executed with uncompromising quality. Apartments here are the epitome of style, inspiring serenity with their masterful use of space.







REAWAKEN LUXURY

OPULENCE,  
RENEWED.



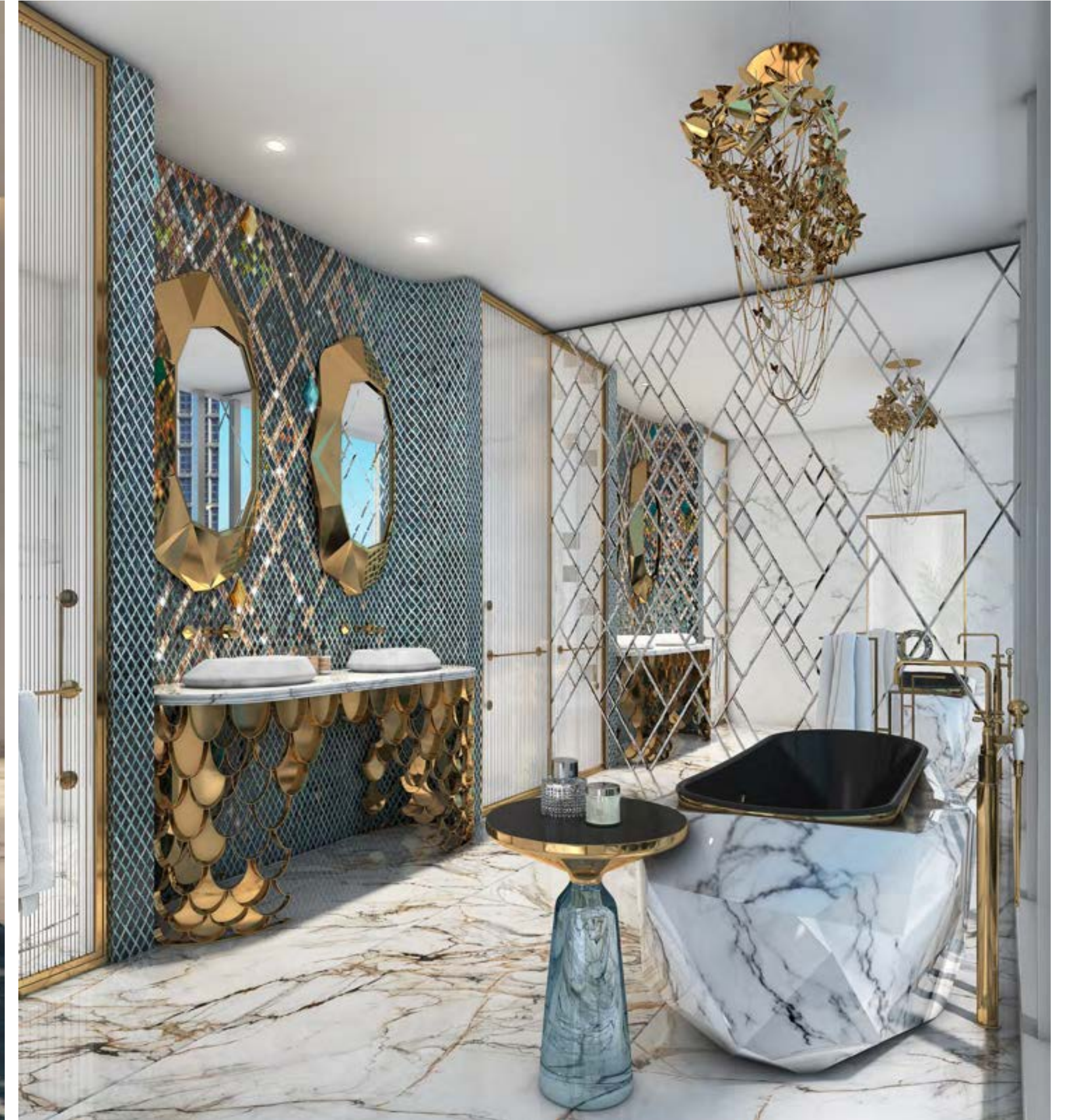
Reach the heights of our super luxury units to discover a new interpretation of elegance, with every apartment boasting a terrace full of flowers, plants, infinity pool, personal gym, and projection screen on which to enjoy your favourite films and sporting events.







R E A W A K E N



L U X U R Y



F L O O R P L A N S

CHIC  
TOWER





TYPE 01 | BALCONY 03  
LEVELS: 02, 06, 10, 14, 18, 22, 26, 30



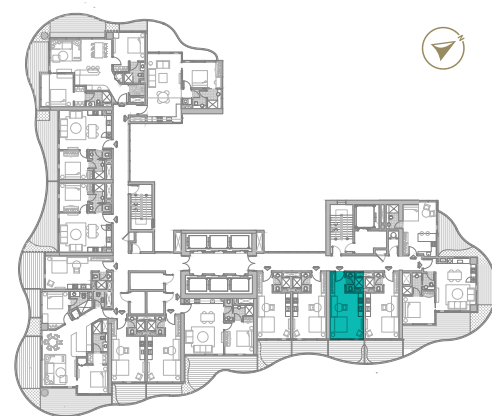
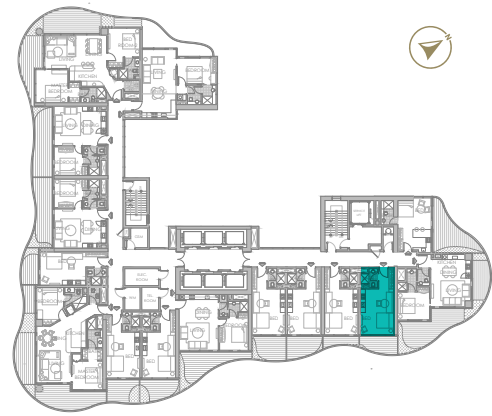
TYPE 01 | BALCONY 18  
LEVELS: 03, 05, 07, 09, 11, 13,  
17, 19, 21, 23, 25, 27, 29, 31



TYPE 01 | BALCONY 33  
LEVELS: 04, 08, 12, 20, 24, 28, 32



TYPE 01 | BALCONY 04  
LEVELS: 02, 06, 10, 14, 18, 22, 26, 30







TYPE 01 | BALCONY 19  
LEVELS: 03, 05, 07, 09, 11, 13, 17,  
19, 21, 23, 25, 27, 29, 31



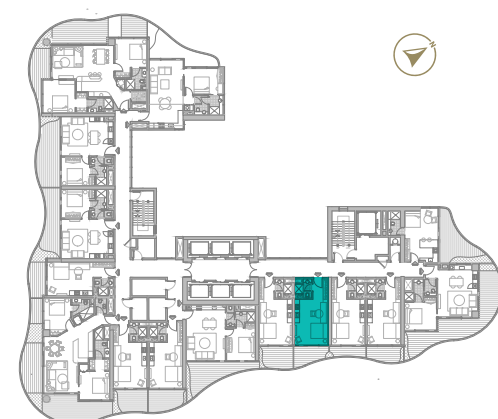
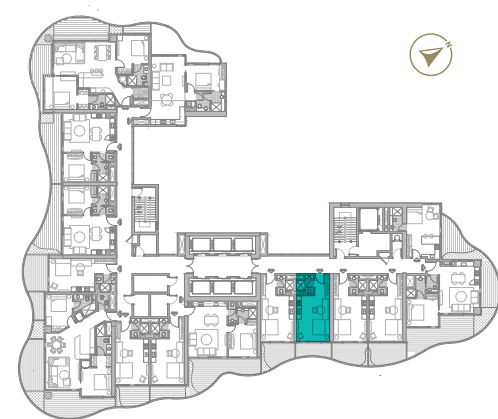
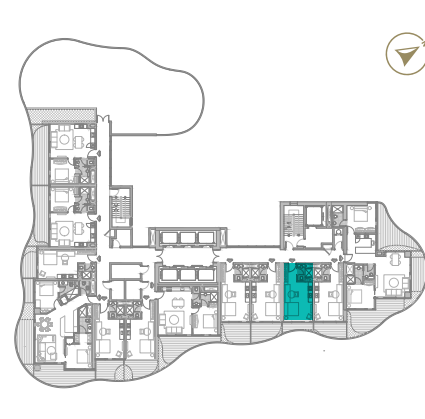
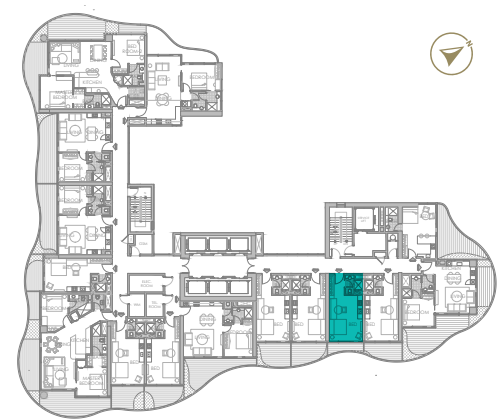
TYPE 01 | BALCONY 34  
LEVELS: 04, 08, 12, 20, 24, 28, 32



TYPE 01 | BALCONY 05  
LEVELS: 02, 06, 10, 14, 18, 22, 26, 30



TYPE 01 | BALCONY 20  
LEVELS: 03, 05, 07, 09, 11, 13,  
17, 19, 21, 23, 25, 27, 29, 31







TYPE 01 | BALCONY 35  
LEVELS: 04, 08, 12, 20, 24, 28, 32



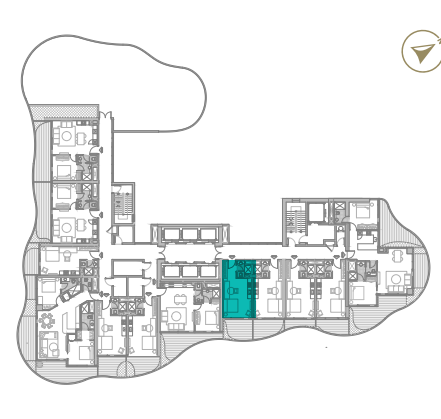
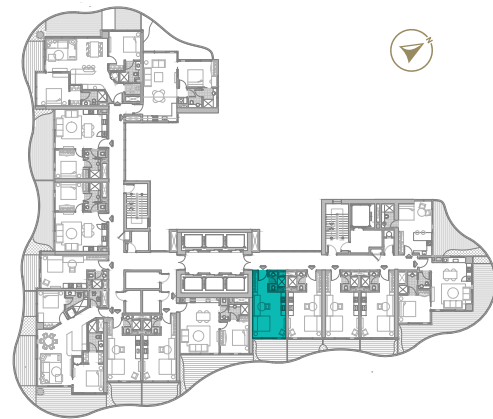
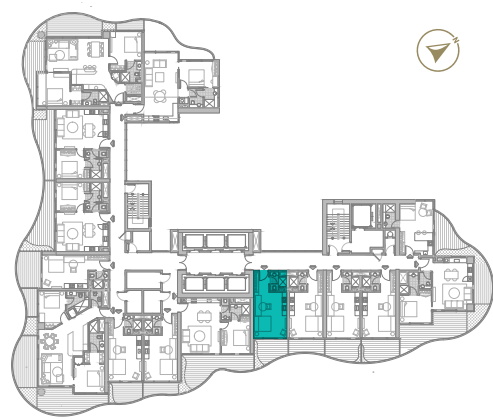
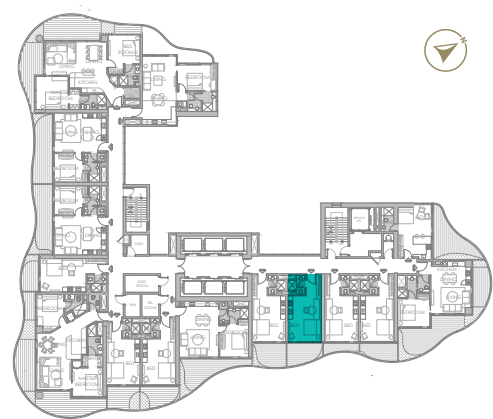
TYPE 01 | BALCONY 06  
LEVELS: 02, 06, 10, 14, 18, 22, 26, 30



TYPE 01 | BALCONY 21  
LEVELS: 03, 05, 07, 09, 11, 13, 17,  
19, 21, 23, 25, 27, 29, 31



TYPE 01 | BALCONY 36  
LEVELS: 04, 08, 12, 20, 24, 28, 32







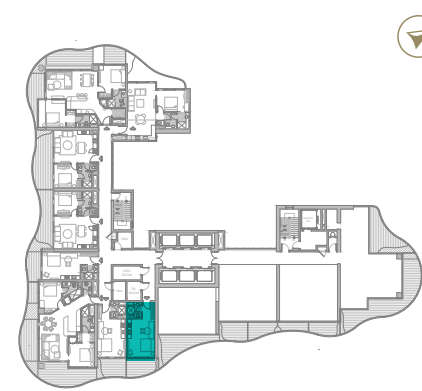
TYPE 01 | BALCONY 08  
LEVELS: 02, 06, 10, 14, 18, 22, 26, 30



TYPE 01 | BALCONY 23  
LEVELS: 03, 05, 07, 09, 11, 13, 15,  
17, 19, 21, 23, 25, 27, 29, 31



TYPE 01 | BALCONY 38  
LEVELS: 04, 08, 12, 16, 20, 24, 28, 32







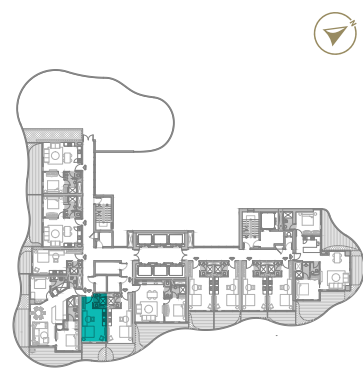
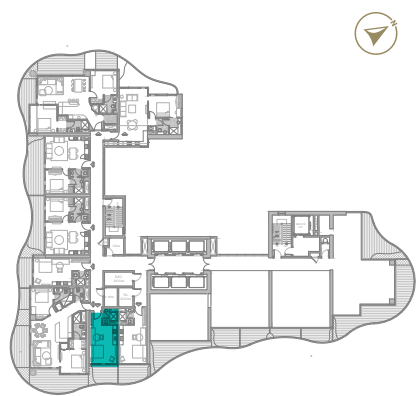
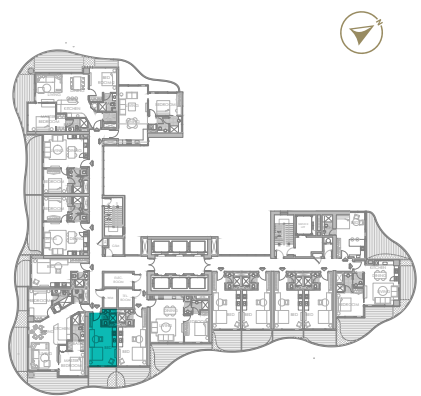
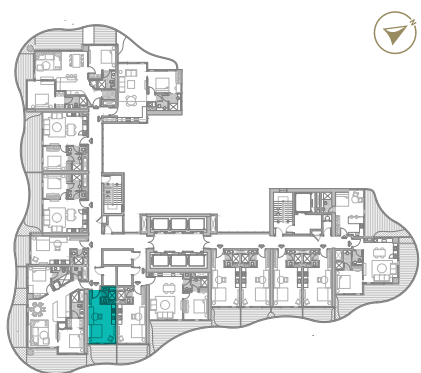
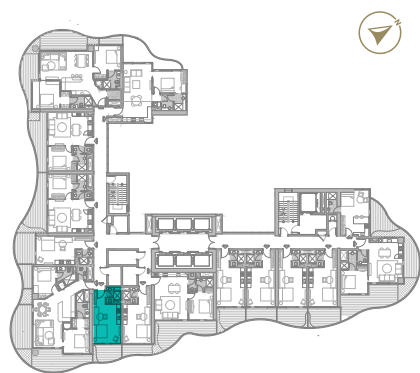
TYPE 02 | BALCONY 09  
LEVELS: 02, 06, 10, 14, 18, 22, 26, 30



TYPE 02 | BALCONY 24  
LEVELS: 03, 05, 07, 09, 11, 13, 15,  
17, 19, 21, 23, 25, 27, 29, 31



TYPE 02 | BALCONY 39  
LEVELS: 04, 08, 12, 16, 20, 24, 28, 32







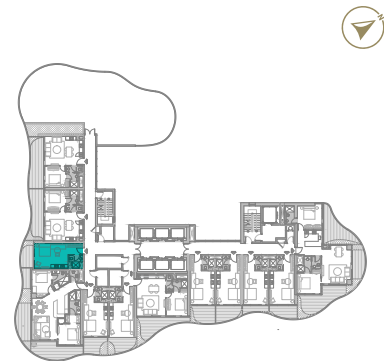
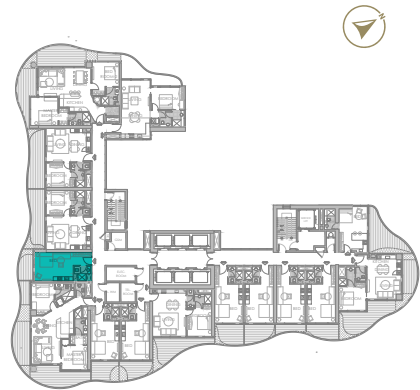
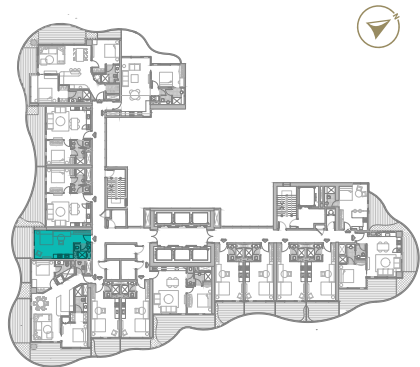
TYPE 03 | BALCONY 11  
LEVELS: 02, 06, 10, 14, 18, 22, 26, 30



TYPE 03 | BALCONY 26  
LEVELS: 03, 05, 07, 09, 11, 13, 15, 17, 19, 21, 23, 25, 27, 29, 31



TYPE 03 | BALCONY 41  
LEVELS: 04, 08, 12, 16, 20, 24, 28, 32







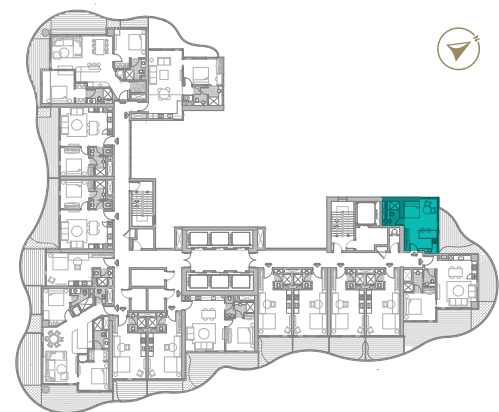
TYPE O4 | BALCONY 01  
LEVELS: 02, 06, 10, 14



TYPE O4 | BALCONY 16  
LEVELS: 03, 05, 07, 09, 11, 13



TYPE O4 | BALCONY 31  
LEVELS: 04, 08, 12





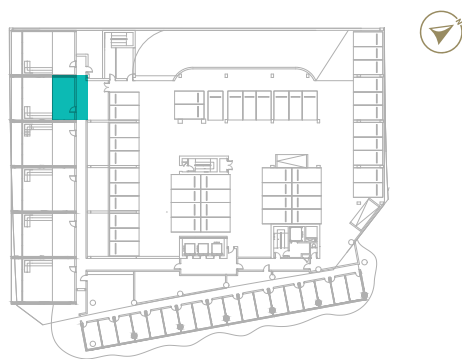
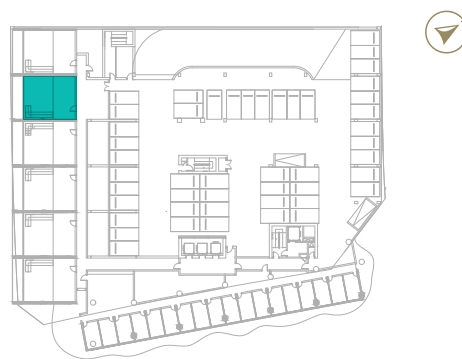
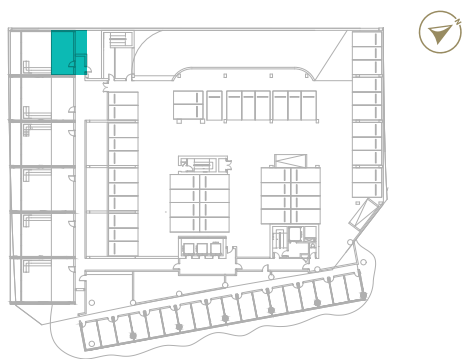
1 BEDROOM  
LOFT



LOFT | BALCONY 01  
LEVELS: P4 & P5



LOFT | BALCONY 02  
LEVELS: P4 & P5





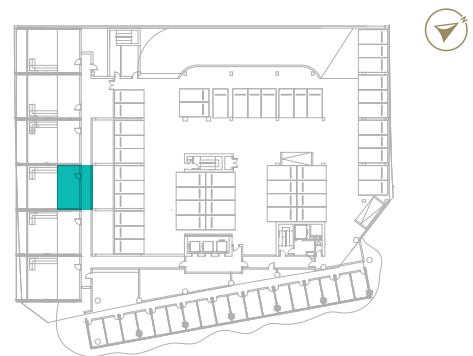
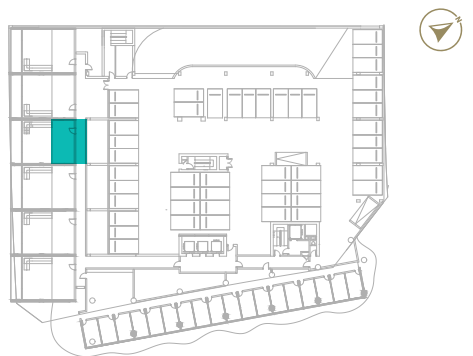
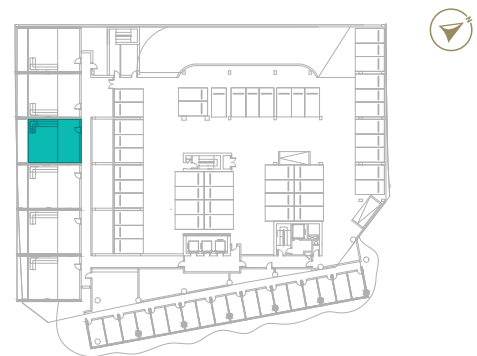
1 BEDROOM  
LOFT



LOFT | BALCONY 03  
LEVELS: P4 & P5



LOFT | BALCONY 04  
LEVELS: P4 & P5



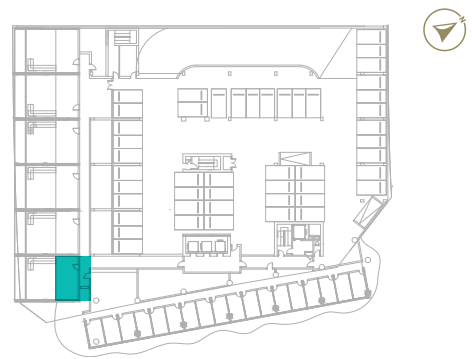
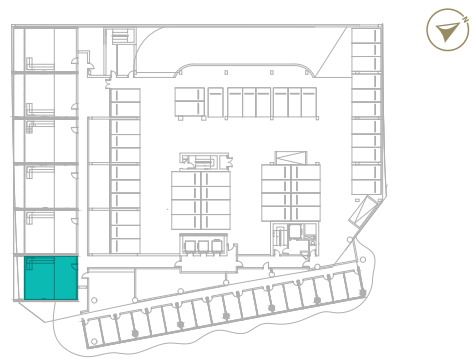
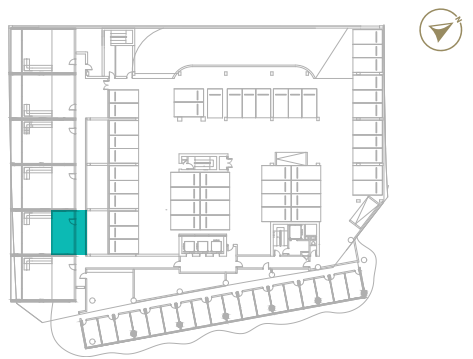
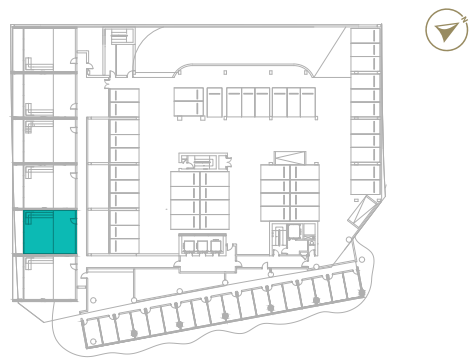




LOFT | BALCONY 05  
LEVELS: P4 & P5



LOFT | BALCONY 06  
LEVELS: P4 & P5





1 BEDROOM

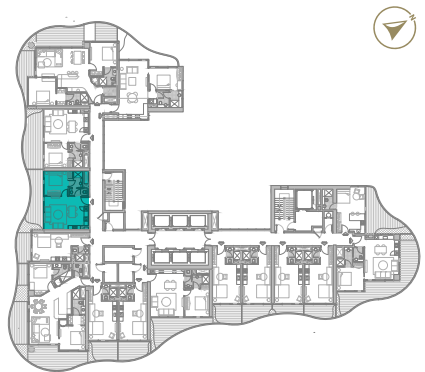
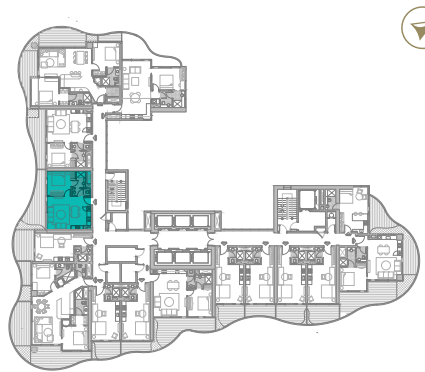
TYPE O1



TYPE O1 | BALCONY 12  
LEVELS: 02, 06, 10, 14, 18, 22, 26, 30



TYPE O1 | BALCONY 27  
LEVELS: 03, 05, 07, 09, 11, 13, 15,  
17, 19, 21, 23, 25, 27, 29, 31





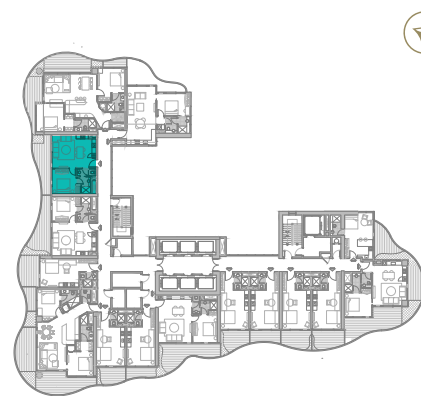
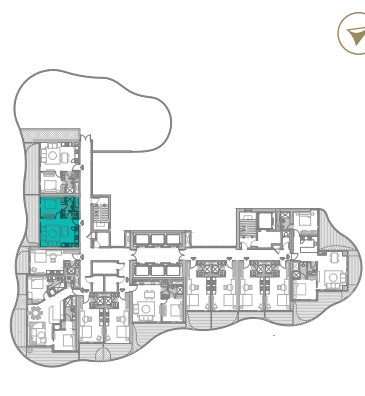
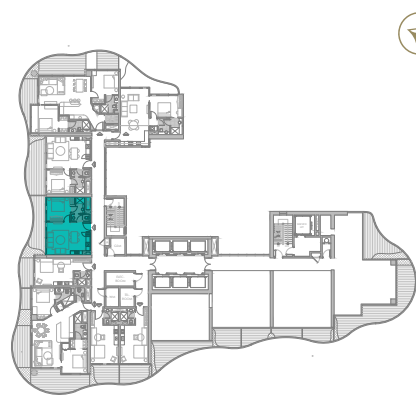
1 BEDROOM  
TYPE O1



TYPE O1 | BALCONY 42  
LEVELS: 04, 08, 12, 16, 20, 24, 28, 32



TYPE O1 | BALCONY 13  
LEVELS: 02, 06, 10, 14, 18, 22, 26, 30





1 BEDROOM

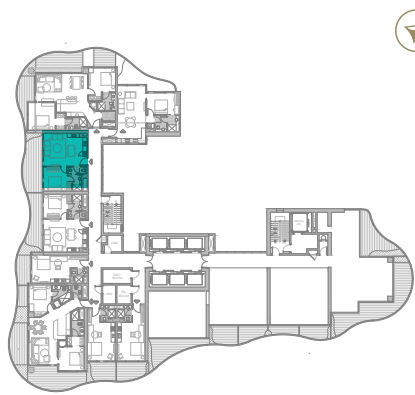
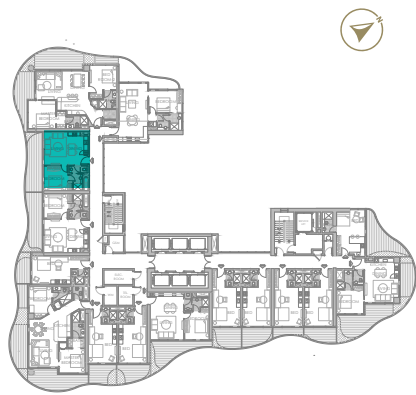
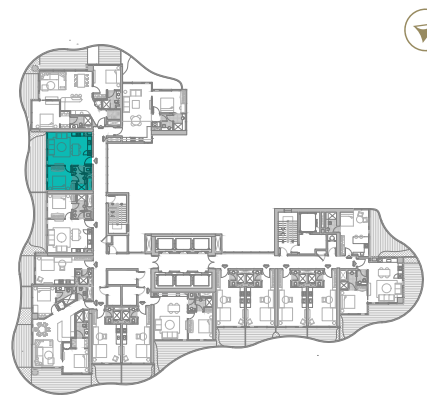
TYPE 01



TYPE 01 | BALCONY 28  
LEVELS: 03, 05, 07, 09, 11, 13, 15,  
17, 19, 21, 23, 25, 27, 29, 31



TYPE 01 | BALCONY 43  
LEVELS: 04, 08, 12, 16, 20, 24, 28, 32

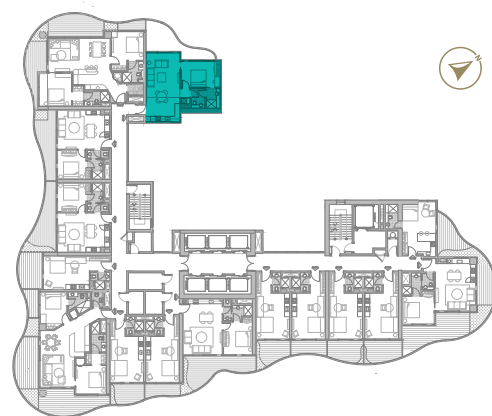




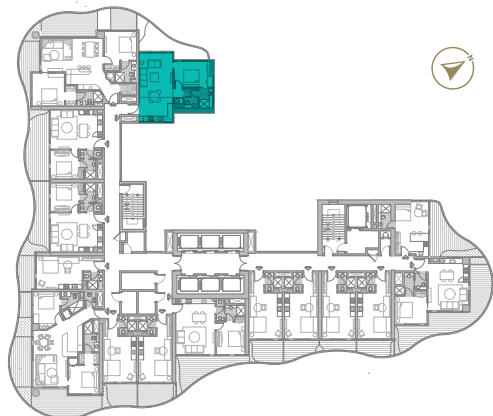
1 BEDROOM  
TYPE 02



TYPE 02 | BALCONY 15  
LEVELS: 02, 06, 10, 14, 18, 22, 26, 30



TYPE 02 | BALCONY 30  
LEVELS: 03, 05, 07, 09, 11, 13, 15,  
17, 19, 21, 23, 25, 27, 29, 31

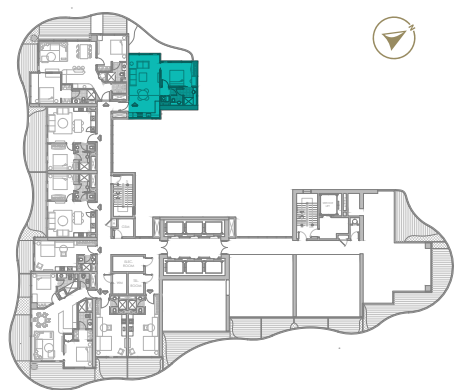
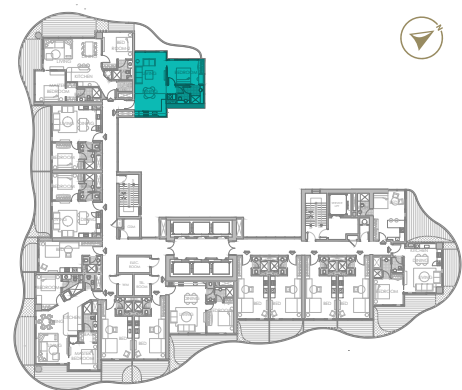




1 BEDROOM  
TYPE 02



TYPE 02 | BALCONY 45  
LEVELS: 04, 08, 12, 16, 20, 24, 28



1 BEDROOM  
TYPE 03



TYPE 03 | BALCONY 07  
LEVELS: 02, 06, 10, 14, 18, 22, 26, 30





1 BEDROOM

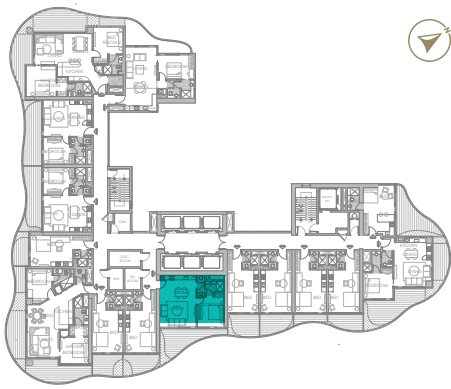
TYPE 03



TYPE 03 | BALCONY 22  
LEVELS: 03, 05, 07, 09, 11, 13,  
17, 19, 21, 23, 25, 27, 29, 31



TYPE 03 | BALCONY 37  
LEVELS: 04, 08, 12, 20, 24, 28, 32



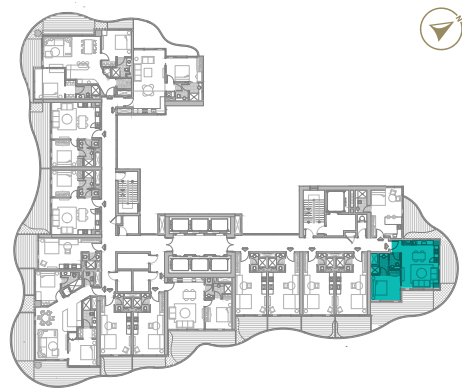


1 BEDROOM

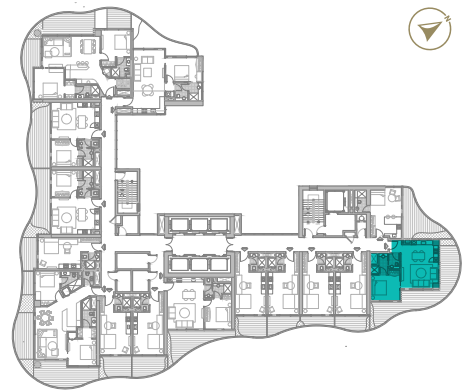
TYPE O4



TYPE O4 | BALCONY O2  
LEVELS: O2, O6, 10, 14



TYPE O4 | BALCONY 17  
LEVELS: O3, O5, O7, O9, 11, 13



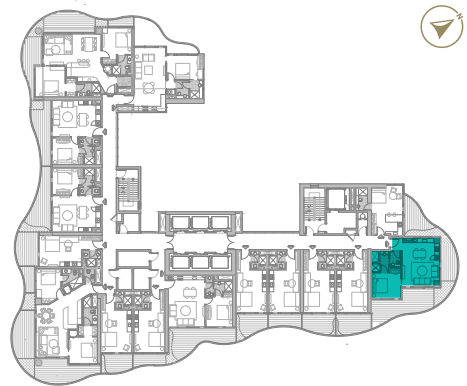


1 BEDROOM

TYPE O4



TYPE O4 | BALCONY 32  
LEVELS: 04, 08, 12

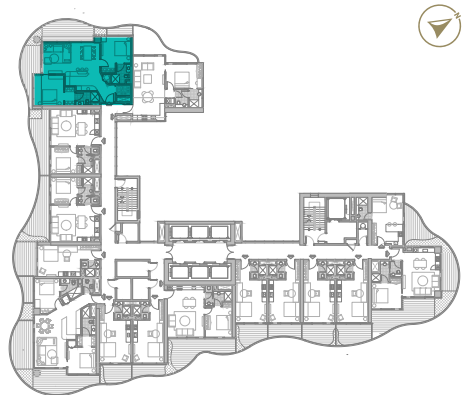


1 BEDROOM

TYPE O4



TYPE O1 | BALCONY 14  
LEVELS: 02, 06, 10, 14, 18, 22, 26, 30





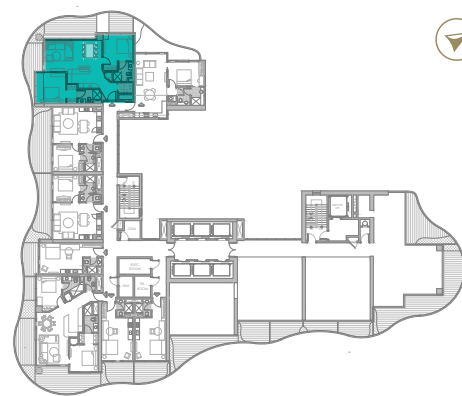
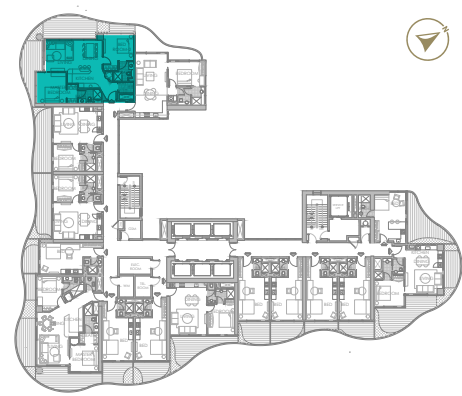
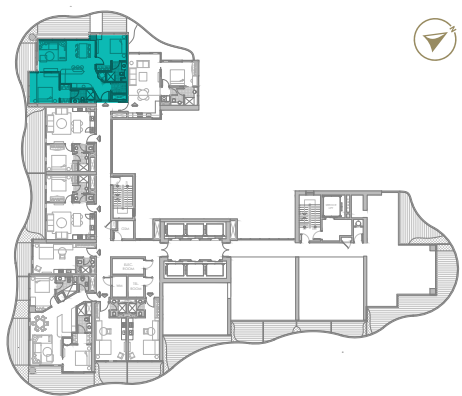
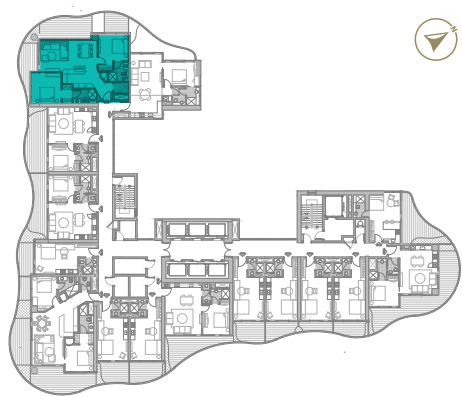
2 BEDROOM  
TYPE O1



TYPE O1 | BALCONY 29  
LEVELS: 03, 05, 07, 09, 11, 13, 15,  
17, 19, 21, 23, 25, 27, 29, 31



TYPE O1 | BALCONY 44  
LEVELS: 04, 08, 12, 16, 20, 24, 28





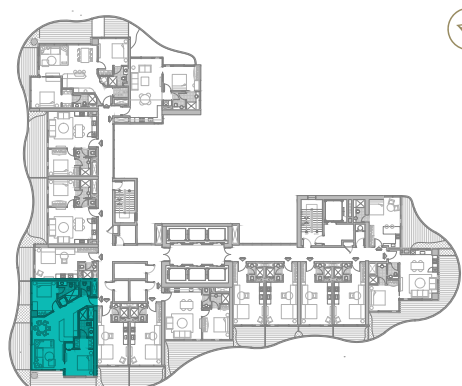
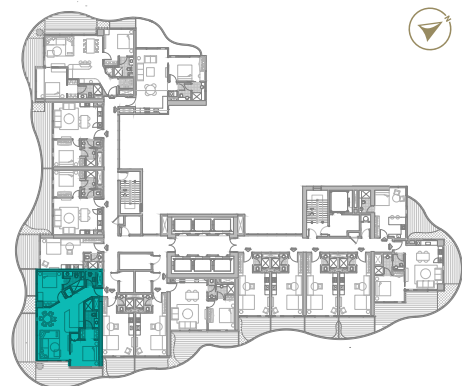
2 BEDROOM  
TYPE 02



TYPE 02 | BALCONY 10  
LEVELS: 02, 06, 10, 14, 18, 22, 26, 30



TYPE 02 | BALCONY 35  
LEVELS: 03, 05, 07, 09, 11, 13, 15,  
17, 19, 21, 23, 25, 27, 29, 31





2 BEDROOM  
TYPE 02

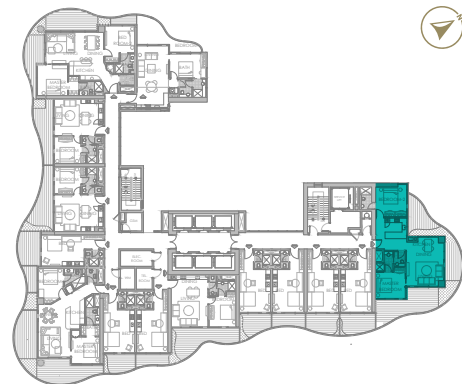
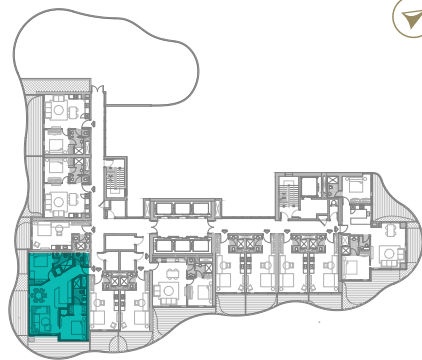
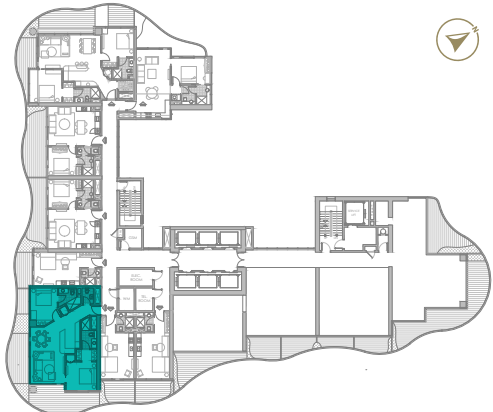
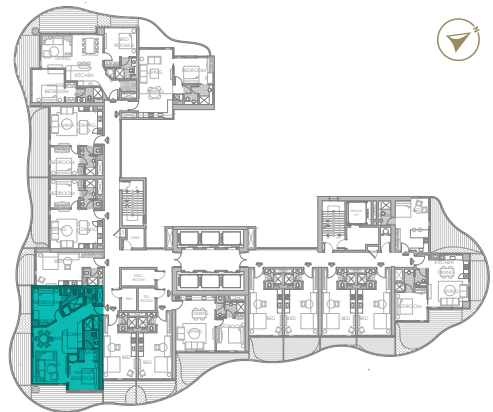


TYPE 02 | BALCONY 40  
LEVELS: 04, 08, 12, 16, 20, 24, 28, 32

2 BEDROOM  
TYPE 03



TYPE 03 | BALCONY 46  
LEVELS: 18, 22, 26, 30





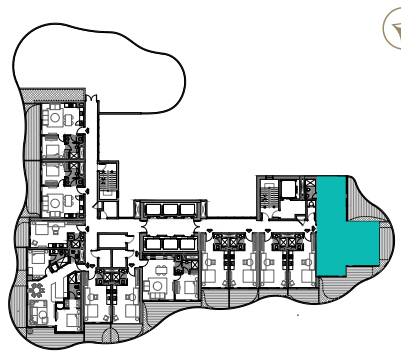
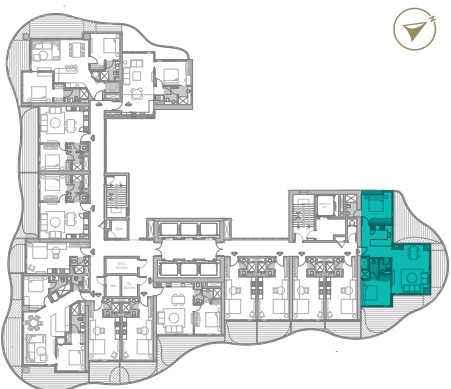
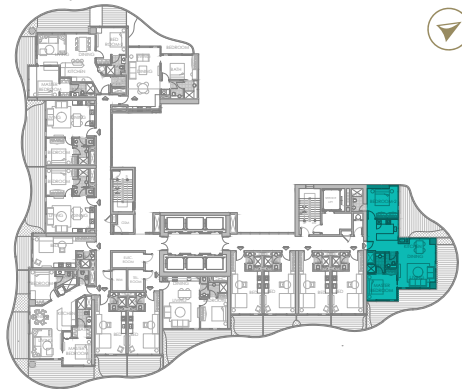
2 BEDROOM  
TYPE 03



TYPE 03 | BALCONY 47  
LEVELS: 17, 19, 21, 23, 25, 27, 29, 31



TYPE 03 | BALCONY 48  
LEVELS: 20, 24, 28, 32





# DAMAC PROPERTIES

LIVE THE LUXURY

DAMAC Properties has been at the forefront of the Middle East's luxury real estate market since 2002, delivering award-winning residential, commercial and leisure properties across the region, including the UAE, Saudi Arabia, Qatar, Jordan, Lebanon, Iraq, Maldives, Canada, the United States, as well as the United Kingdom. Since then, the company has delivered approximately 42,000 homes, with a development portfolio of more than 28,000 at various stages of planning and progress.\*

Joining forces with some of the world's most eminent fashion and lifestyle brands, DAMAC has brought new and exciting living concepts to the market in collaborations that include a golf course managed by The Trump Organization, and luxury homes in association with Versace, Cavalli, Just Cavalli, de GRISOGONO, Paramount Hotels & Resorts, Rotana and the Radisson Hotel Group. With a consistent vision, and strong momentum, DAMAC Properties is building the next generation of Middle Eastern luxury living.

DAMAC places a great emphasis on philanthropy and corporate social responsibility. The Hussain Sajwani – DAMAC Foundation, a joint initiative between DAMAC Group and Hussain Sajwani, recently announced the launch of the 'Fresh Slate' in collaboration with the Dubai Police General Headquarters, aimed at aiding detainees in Dubai's Punitive and Correctional Institutions who have been charged with petty offences.

The HSDF has also pledged AED 5 million for the 1 Billion Meals initiative launched by Vice President and Prime Minister of the UAE, and Ruler of Dubai, His Highness Sheikh Mohammed bin Rashid Al Maktoum, at the start of Ramadan 2022, aimed at providing meals to underprivileged communities in 50 countries across the world.

DAMAC has also supported the vision of Sheikh Mohammed to train one million Arab coders in creating an empowered society through learning and skills development, an initiative that successfully wrapped up in May 2022.

\*As of 30<sup>th</sup> June 2022.

# LUXURY BY APPOINTMENT

CONTACT US AT ANY OF OUR OFFICES OR VISIT [DAMACPROPERTIES.COM](https://damacproperties.com)

## UNITED ARAB EMIRATES

Dubai  
Tel: 800-DAMAC (800-32622)  
E-mail: [dubai@damacgroup.com](mailto:dubai@damacgroup.com)

Park Towers – Sales Centre  
Dubai International Financial Centre

AYKON City – Sales Centre  
Floor 63, Sheikh Zayed Road

DAMAC Hills – Sales Centre  
Sheikh Zayed bin Hamdan Al Nahyan Street

DAMAC Hills – Sales Centre  
Golf Veduta, Townhouse TH2

DAMAC Hills – Sales Centre  
Bellavista (Carson Building)

DAMAC Hills 2 – Sales Centre  
Amazonia Cluster, Villa 333

DAMAC Hills 2 – Sales Centre  
Water Town

## QATAR

Building 90, New Solta Area  
Ali bin Abi Talib Street  
Next to Omar bin Al Khattab Health Centre  
Tel: +974 44 666 986  
Fax: +974 44 554 576  
E-mail: [doha@damacgroup.com](mailto:doha@damacgroup.com)

## KINGDOM OF SAUDI ARABIA

DAMAC Towers Riyadh  
South Tower  
Olaya District  
King Fahd Road  
PO Box 102460  
Tel: +966 11 835 0300  
E-mail: [ksa@damacgroup.com](mailto:ksa@damacgroup.com)

## TURKEY

Levazım, Mah. Koru Sk. Zorlu Centre No. 2  
IC Kapi No. 347, Beşiktaş/İstanbul  
Turkey  
Tel: +90 212 892 0327  
Fax: +90 212 890 7184  
E-mail: [turkey.office@damacgroup.com](mailto:turkey.office@damacgroup.com)

## LEBANON

Unit 1801, 18th Floor  
DAMAC Tower  
Omar Daouk Street  
Mina El Hosn, Beirut Central District  
Tel: +961 81 647 200  
E-mail: [beirut@damacgroup.com](mailto:beirut@damacgroup.com)

## JORDAN

Opposite Abdali Mall Gate #1  
Al Istithmar Street  
Abdali Project, Amman  
Tel: +962 6 510 7000  
Fax: +962 6 565 7896  
E-mail: [amman@damacgroup.com](mailto:amman@damacgroup.com)

## UNITED KINGDOM

4th Floor, 100 Brompton Road  
Opposite Harrods  
Knightsbridge, London  
SW3 1ER, United Kingdom  
Tel: +44 (0) 207 590 8050  
E-mail: [sales@damactower.co.uk](mailto:sales@damactower.co.uk)





***DAMAC***