

# The Astera

INTERIORS BY ASTON MARTIN



DARGLOBAL

Joint Development Partner



ARVEES

THE MOST DESIRABLE LUXURY RESIDENCES IN THE WORLD



IMMERSE YOURSELF IN  
UNWAVERING  
BEAUTY







EXPERIENCE THE  
FIERCELY INDEPENDENT  
ISLAND SPIRIT





DISCOVER  
EXCEPTIONAL  
ENGINEERING





# The Astera

INTERIORS BY ASTON MARTIN



DARGLOBAL







## BIRTH OF A LEGEND

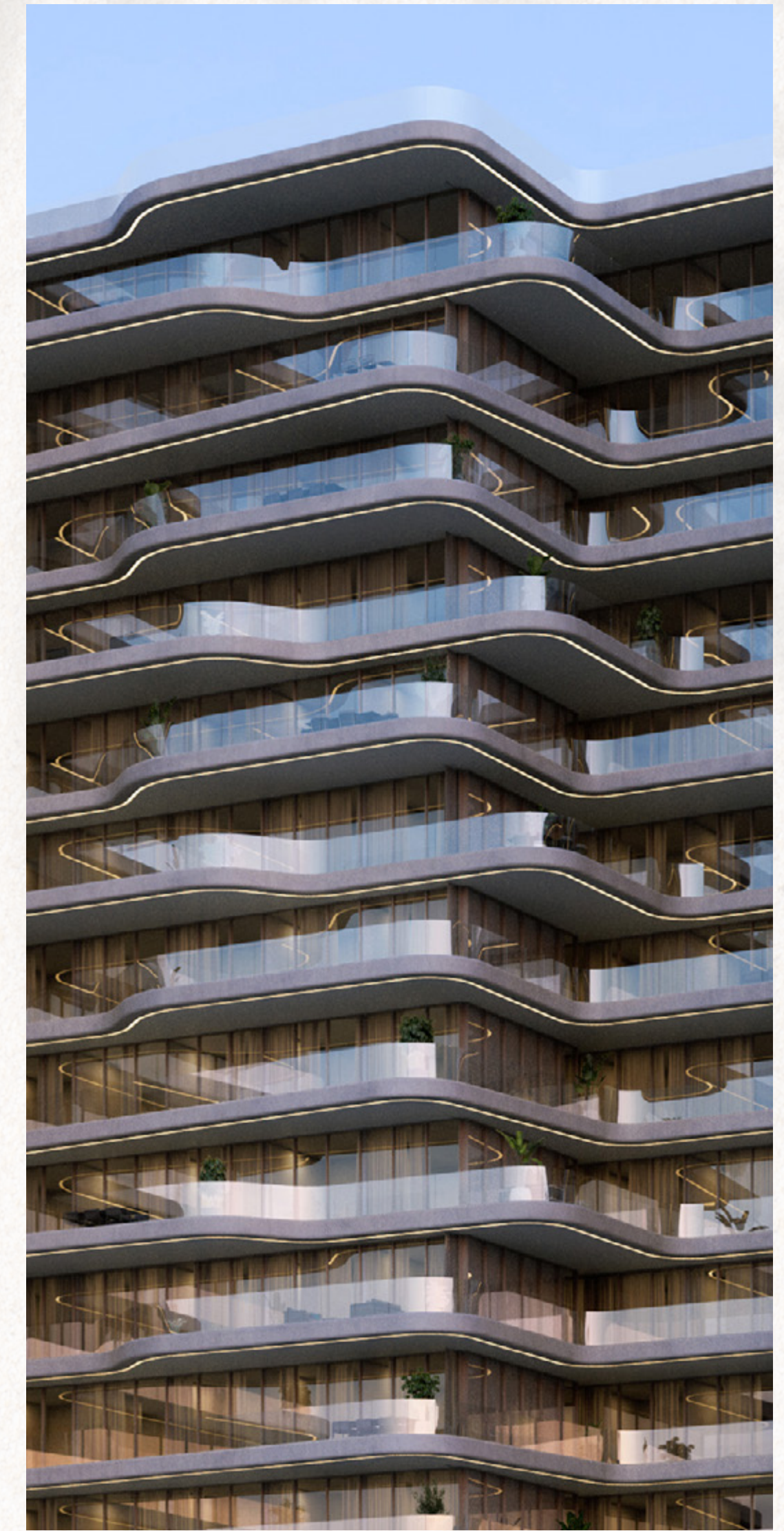
# ASTON MARTIN

The remarkable story of Aston Martin began on January 15th, 1913, when founders Robert Bamford and Lionel Martin established Bamford and Martin Limited, operating from a modest workshop on Henniker Mews in London. Their vision of crafting cars renowned for impeccable design and superior performance captured the public's imagination, a fascination that endures even after a century.

In 1914, the name Aston Martin was adopted, a fitting choice inspired by Lionel's success at the Aston Hill Climb in Buckinghamshire, England.

Driven by a spirit of competition from the outset, Aston Martin has evolved into an iconic brand synonymous with artisanal luxury, timeless elegance, exceptional performance, and triumphs in international motorsport since those pioneering days.









DARGLOBAL

# ENGINEERING THE WORLD'S MOST DESIRABLE

DRIVEN BY BRITISH INGENUITY

Infused with the spirit of British ingenuity, The Astera, Interiors by Aston Martin, epitomizes the seamless fusion of bespoke style, cutting-edge material science, meticulous craftsmanship, and unparalleled functionality, resulting in the creation of the world's most desirable luxury residences.

In collaboration with DarGlobal, this exceptional blend of expertise and innovation has culminated in the birth of The Astera, an exclusive residential tower, where every detail reflects a commitment to excellence and sophistication.







## AUTHENTIC ISLAND LIVING

ONLY 60 MIN AWAY FROM DUBAI

Cushioned along the pristine shores of Ras Al Khaimah lies Al Marjan island, one of four exquisite man-made coral-shaped islands that extend into the azure waters of the Arabian Gulf.

The Astera adds to the allure of the island, just 60 minutes away from the vibrant city of Dubai, residents can enjoy an elevated lifestyle that seamlessly blends seclusion and convenience.



AL MARJAN ISLAND

# THE WONDERS OF COASTAL LIVING

in Ras Al Khaimah

With its lush landscapes and diverse marine life, Al Marjan Island provides a picturesque setting and unparalleled experiences that cater to every desire. You can bask on pristine beaches, enjoy world-class resorts, luxury hotels, retail outlets, and a wide range of recreational activities.

With its breathtaking sunsets, vibrant nightlife, and exceptional amenities, living in The Astera, on Al Marjan Island, not only embodies, but elevates, the wonders of coastal living.





# AL MARJAN ISLAND, UAE



45 min  
DUBAI INTERNATIONAL AIRPORT



60 min  
DUBAI MALL



60 min  
DUBAI INTERNATIONAL FINANCIAL CENTRE





# PERFECTLY LOCATED

00 min  
Your Direct Beach Access

03 min  
Al Marjan Island Resort & Spa

04 min  
Al Marjan Island Beach Club

05 min  
Al Marjan Island Amphitheater  
(Event Venue)

05 min  
Wynn Resort

06 min  
DoubleTree by Hilton Resort & Spa  
Marjan Island

06 min  
Al Marjan Island Boulevard  
(Shopping and Dining Area)

06 min  
Al Marjan Island Promenade  
(Scenic Walkway)

07 min  
Marjan Beach

27 min  
The Ritz-Carlton Ras Al Khaimah,  
Al Hamra Beach







PANORAMIC VIEWS

## OF THE ARABIAN GULF & DIRECT BEACH ACCESS

The Astera is situated in a location that epitomizes the spirit of excitement and elegance, mirroring the brand's renowned prestige. Nestled within one of the prime waterfront locations in Al Marjan Island, the residential tower offers sweeping vistas of the Arabian Gulf, the city's iconic skyline, and the bustling island.

Residents will enjoy direct beach access within the vibrant and rapidly expanding greater downtown area of Ras Al Khaimah. This includes the bustling neighborhoods of the island, the luxury resorts, and attractions, each brimming with an array of amenities to explore and indulge in.



MASTERFULLY DESIGNED  
BY THE LEGENDARY  
ASTON MARTIN

Crafted to harmonize with the surrounding landscape of Al Marjan Island, each residence is designed to emulate the dynamic flow of a power wave, ensuring breathtaking views from every angle.

Aston Martin, a brand synonymous with luxury, innovation, and cutting-edge design, brings its expertise to the interiors of these residential tower. The brand's signature style, featuring elegant lines, premium materials, and a sophisticated aesthetic is reflected in every detail.



Disclaimer: Illustrative concept visuals, subject to final interior designs





## INTERIORS

# PASSIONATELY DESIGNED

Inspired by the sleek lines and dynamic forms of the Aston Martin product, the interiors of the residences are a testament to over 110 years of British ingenuity, craftsmanship, and material science.

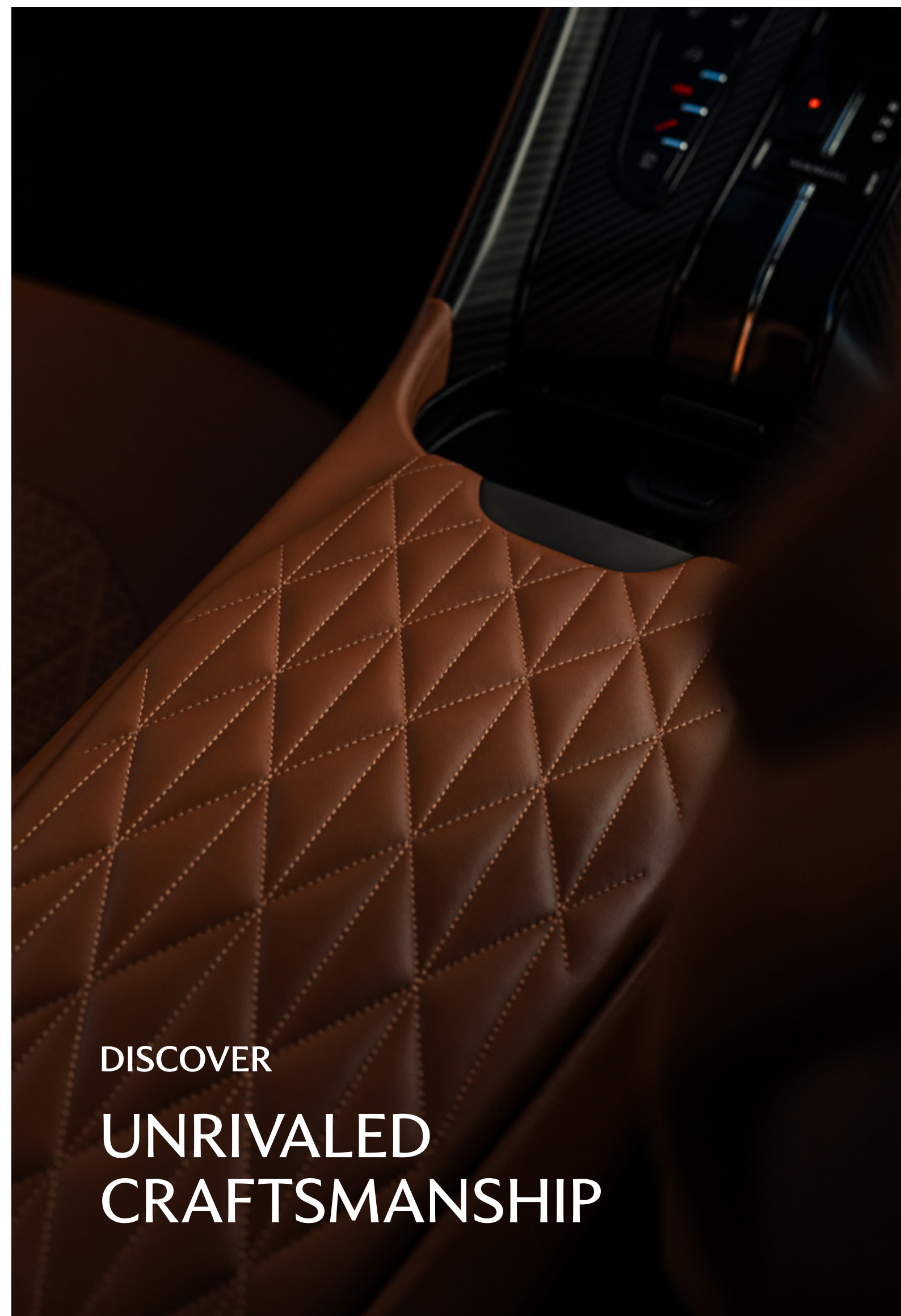
A plethora of rich materials such as fine leather, polished metals, and exotic woods are seamlessly integrated into the spaces, exuding performance and bespoke style.





Disclaimer: Illustrative concept visuals, subject to final interior designs





DISCOVER  
UNRIVALED  
CRAFTSMANSHIP







DETAILS

## METICULOUSLY CRAFTED

Each meticulous detail elevates the living experience, ensuring optimal performance and comfort.

With a commitment to excellence, The Astera, Interiors by Aston Martin, offers a bespoke lifestyle experience that embodies the essence of luxury living.





Disclaimer: Illustrative concept visuals, subject to final interior designs



CREATURE COMFORTS

# FOR THE DISCERNING FEW



At the podium of the tower, residents are treated to a range of world-class amenities, including direct beach access. From an infinity pool offering breathtaking views of the ocean to a scenic walk track and lush green spaces, every corner invites relaxation and rejuvenation.



Indoor cinema



Fitness centre



Multipurpose hall



Kids play area



Yoga lawn



Spa



Infinity pool



Pool bar



Direct beach access



WORLD-CLASS  
AMENITIES DECK

- 1

Indoor Cinema
- 2

Fitness Centre
- 3

Multipurpose Hall
- 4

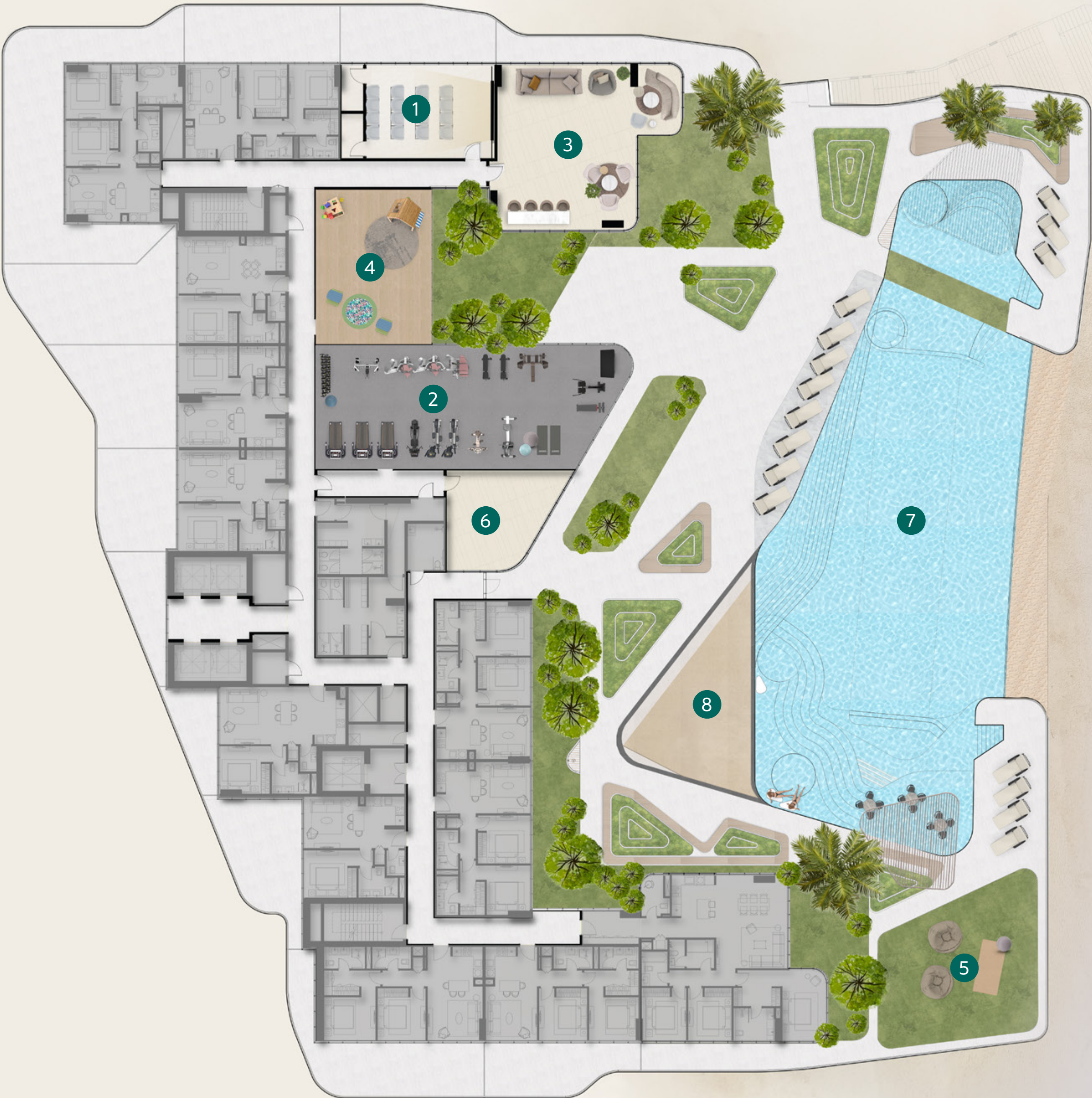
Kids Play Area
- 5

Yoga Lawn
- 6

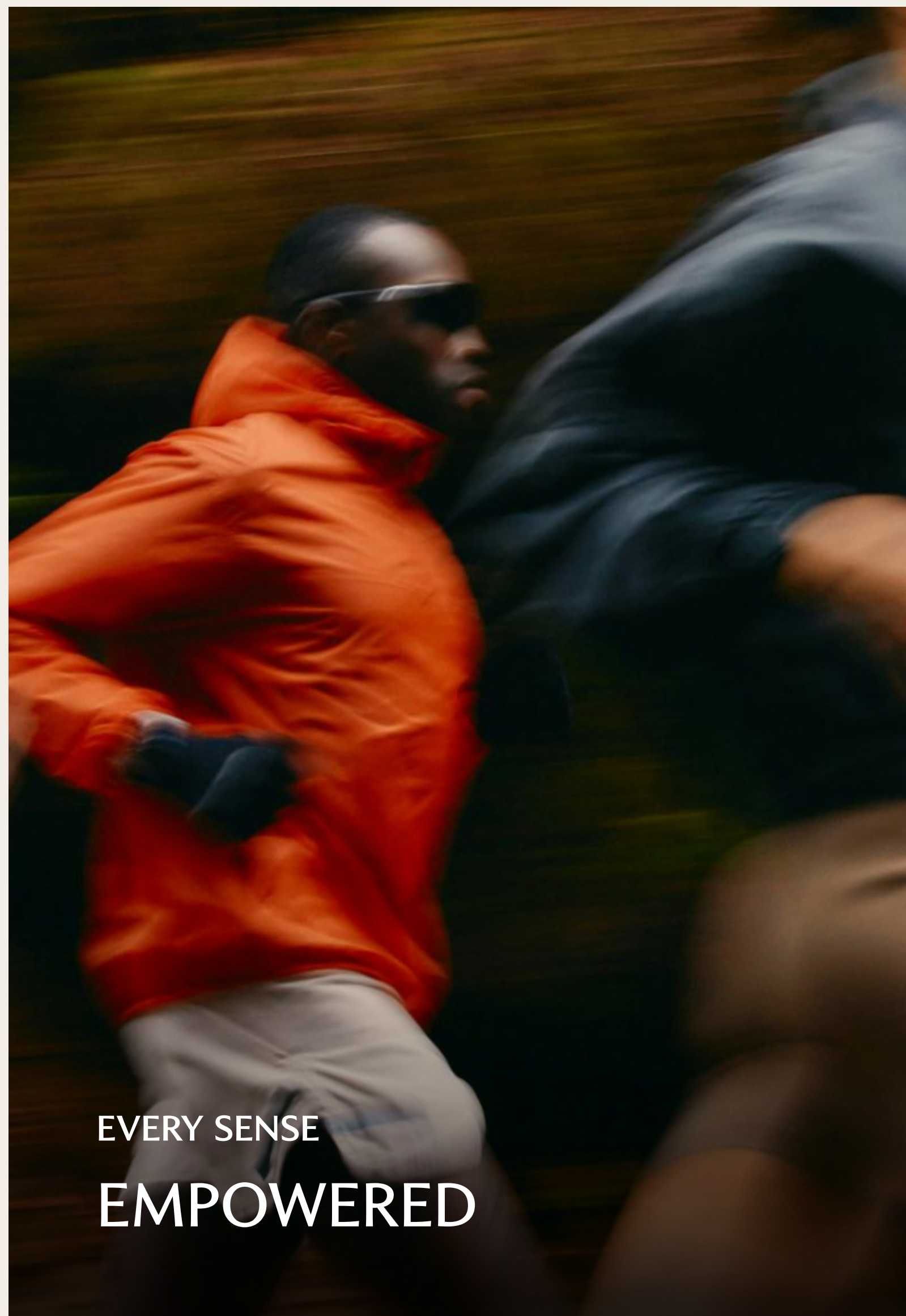
Spa
- 7

Infinity Pool
- 8

Pool bar







EVERY SENSE  
EMPOWERED





# FLOOR PLANS



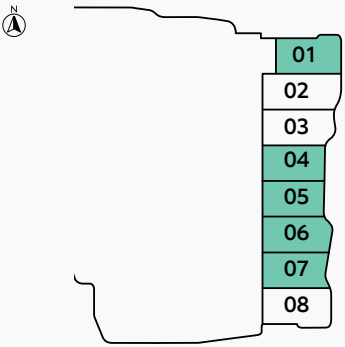
3 BEDROOMS  
VILLA TYPE A

The Astera  
INTERIORS BY ASTON MARTIN

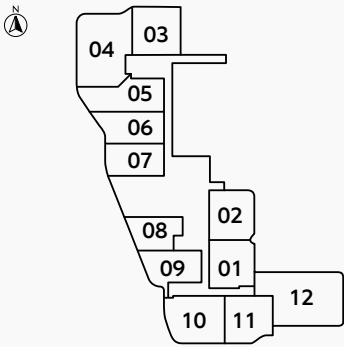


SEA & ISLAND VIEW

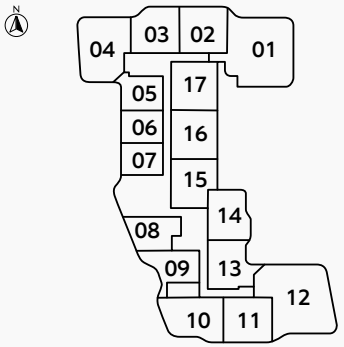
FLOOR  
GROUND



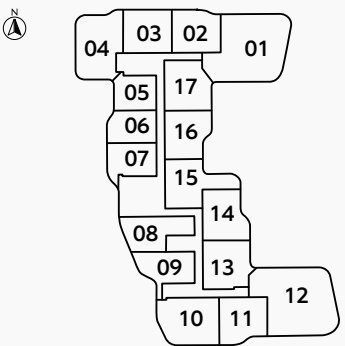
FLOOR  
2



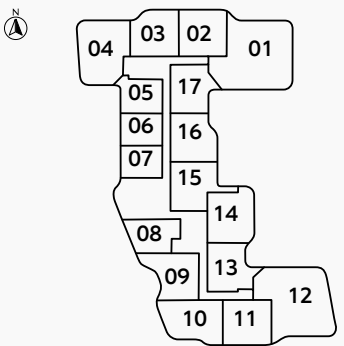
FLOOR  
3



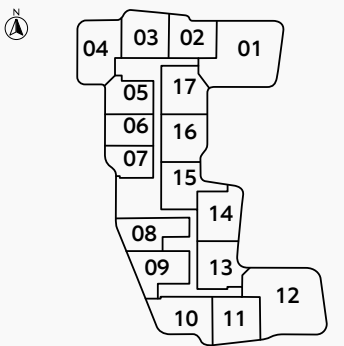
FLOORS  
4, 8, 11, 13, 16



FLOORS  
5, 7, 10, 12, 14



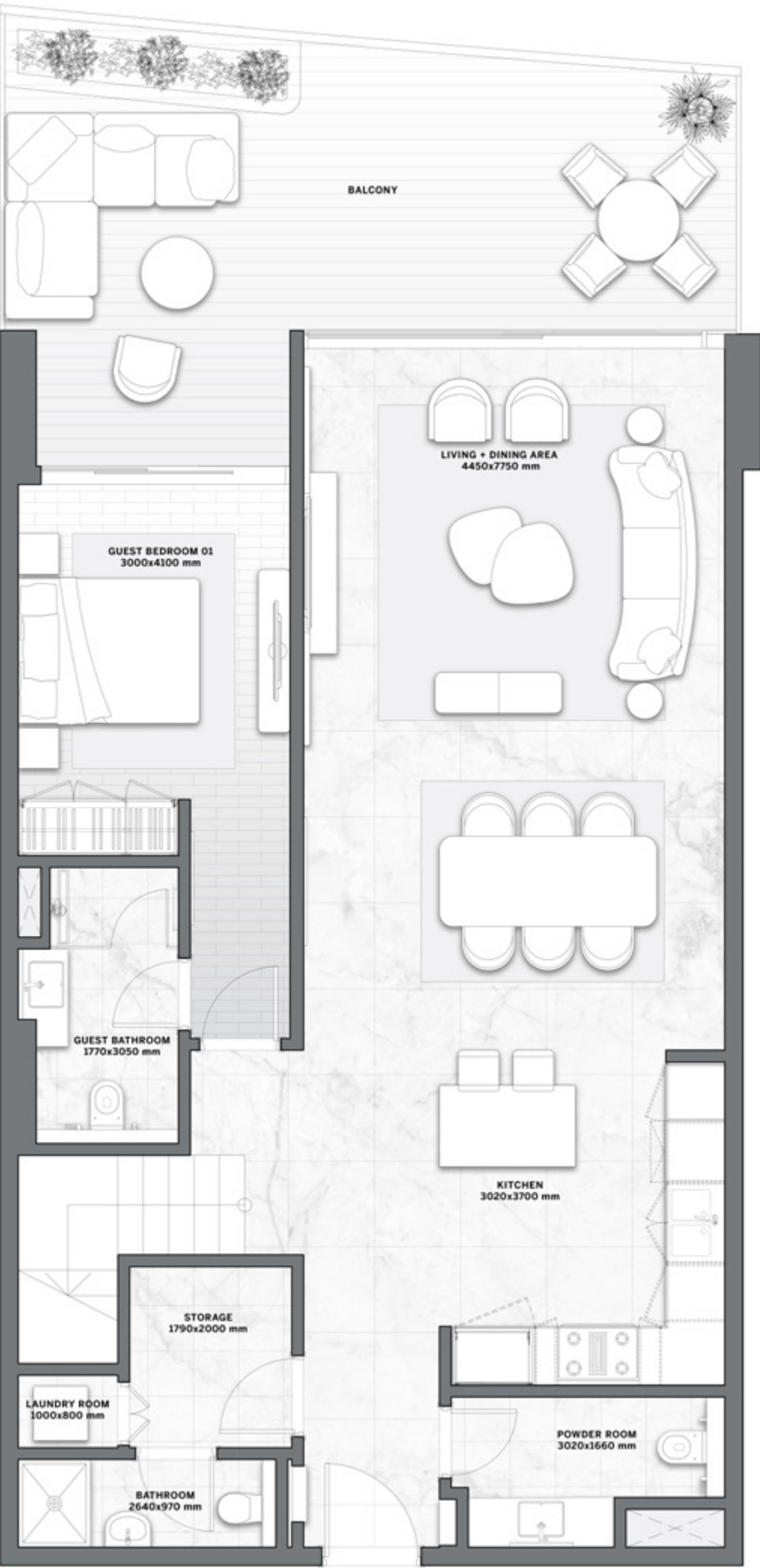
FLOORS  
6, 9, 15



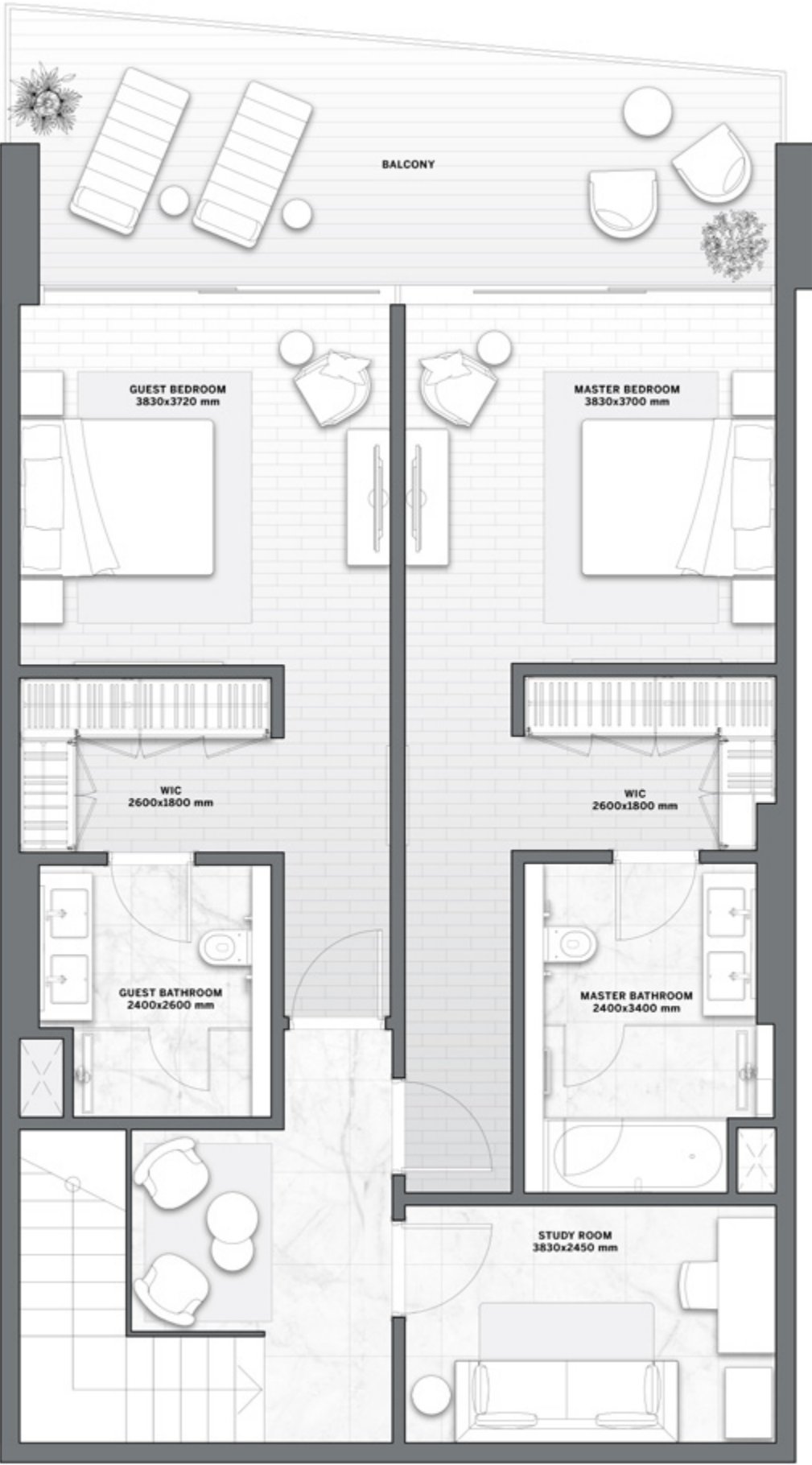
BEACH FRONT VIEW

RESIDENCE	SQM	SQFT
Internal Area	195	2,098
Balcony Area	33 - 44	360 - 476
Total Built up Area	228 - 239	2,456 - 2,573

Disclaimer: All pictures, plans, layouts, information, data and details included in this brochure are indicative only and may change at any time up to the final 'as built' status in accordance with final designs of the project, regulatory approvals and planning permissions. All accessories and interior finishes such as wallpaper, chandeliers, furniture, electronics, white goods, curtains, hard and soft landscaping, pavements, features, gym, and other elements displayed in the brochure, or between the plot boundary, are not part of the unit and are shown for illustrative purposes only.



LOWER LEVEL



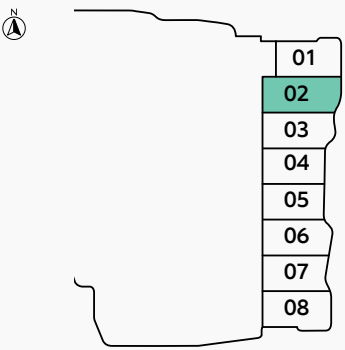
UPPER LEVEL



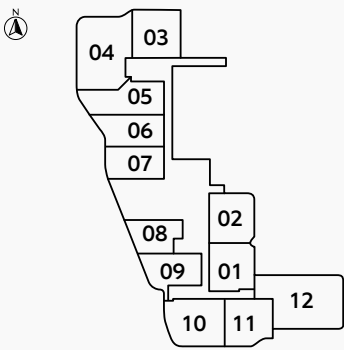
3 BEDROOMS  
VILLA TYPE B

SEA & ISLAND VIEW

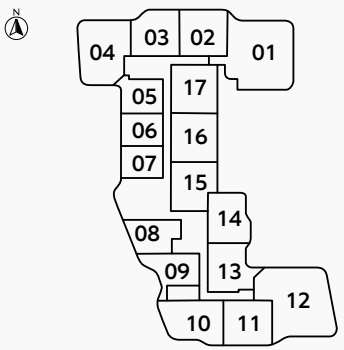
FLOOR  
GROUND



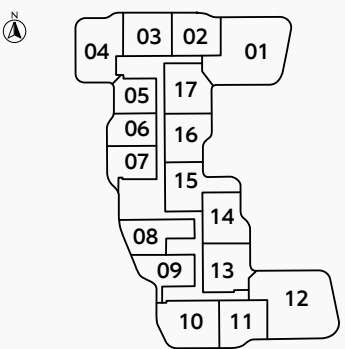
FLOOR  
2



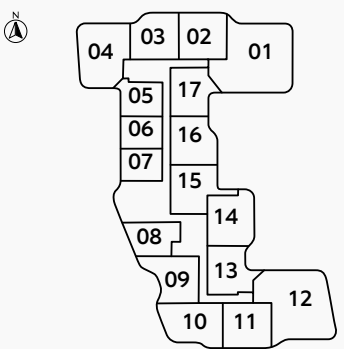
FLOOR  
3



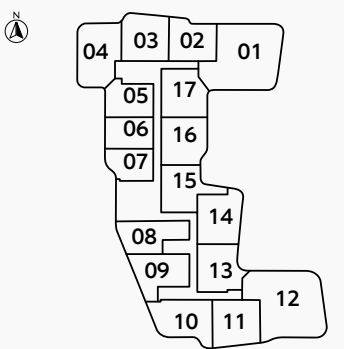
FLOORS  
4, 8, 11, 13, 16



FLOORS  
5, 7, 10, 12, 14



FLOORS  
6, 9, 15

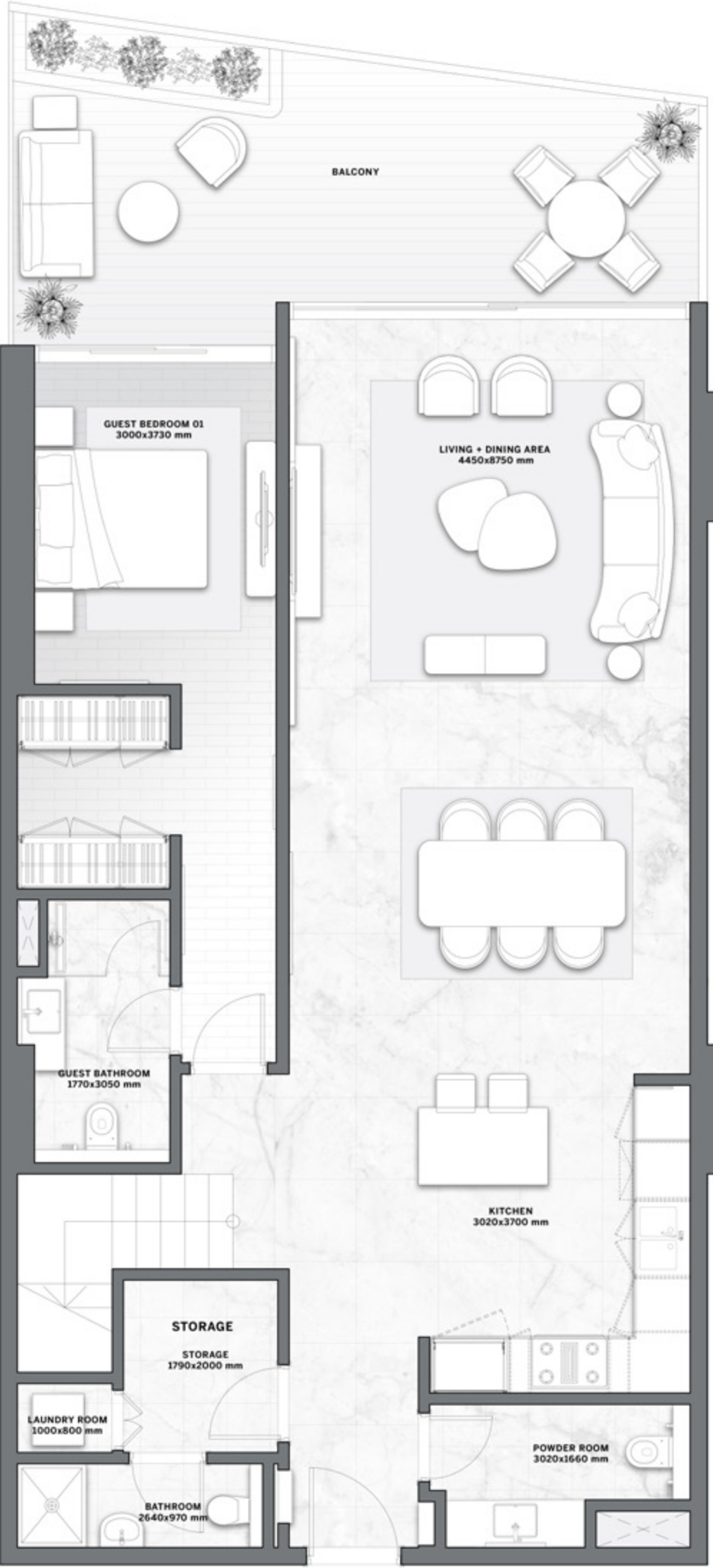
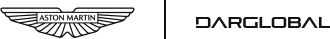


BEACH FRONT VIEW

RESIDENCE	SQM	SQFT
Internal Area	226	2,431
Balcony Area	41	445
Total Built up Area	267	2,876

Disclaimer: All pictures, plans, layouts, information, data and details included in this brochure are indicative only and may change at any time up to the final 'as built' status in accordance with final designs of the project, regulatory approvals and planning permissions. All accessories and interior finishes such as wallpaper, chandeliers, furniture, electronics, white goods, curtains, hard and soft landscaping, pavements, features, gym, and other elements displayed in the brochure, or between the plot boundary, are not part of the unit and are shown for illustrative purposes only.

The Astera  
INTERIORS BY ASTON MARTIN



LOWER LEVEL



UPPER LEVEL



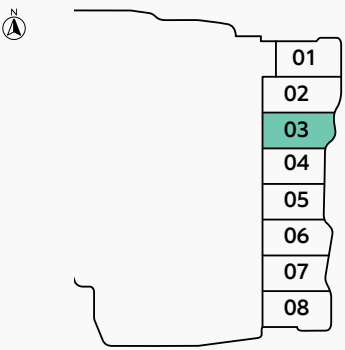
3 BEDROOMS  
VILLA TYPE C

The Astera  
INTERIORS BY ASTON MARTIN

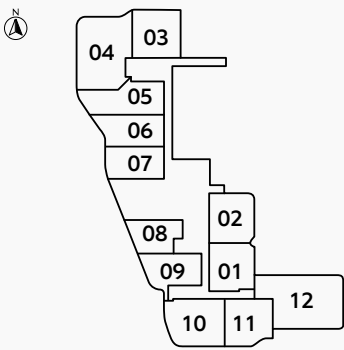


SEA & ISLAND VIEW

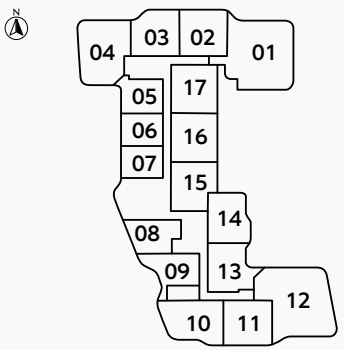
FLOOR  
GROUND



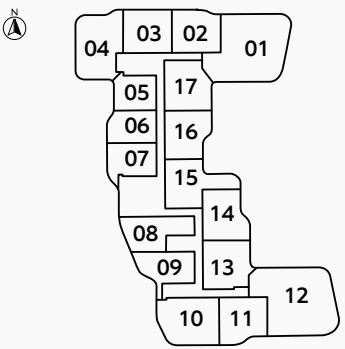
FLOOR  
2



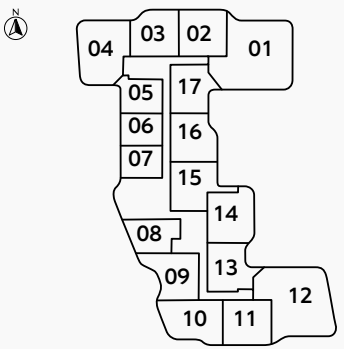
FLOOR  
3



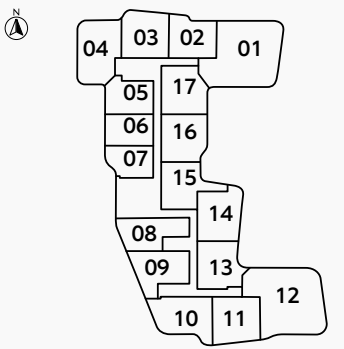
FLOORS  
4, 8, 11, 13, 16



FLOORS  
5, 7, 10, 12, 14



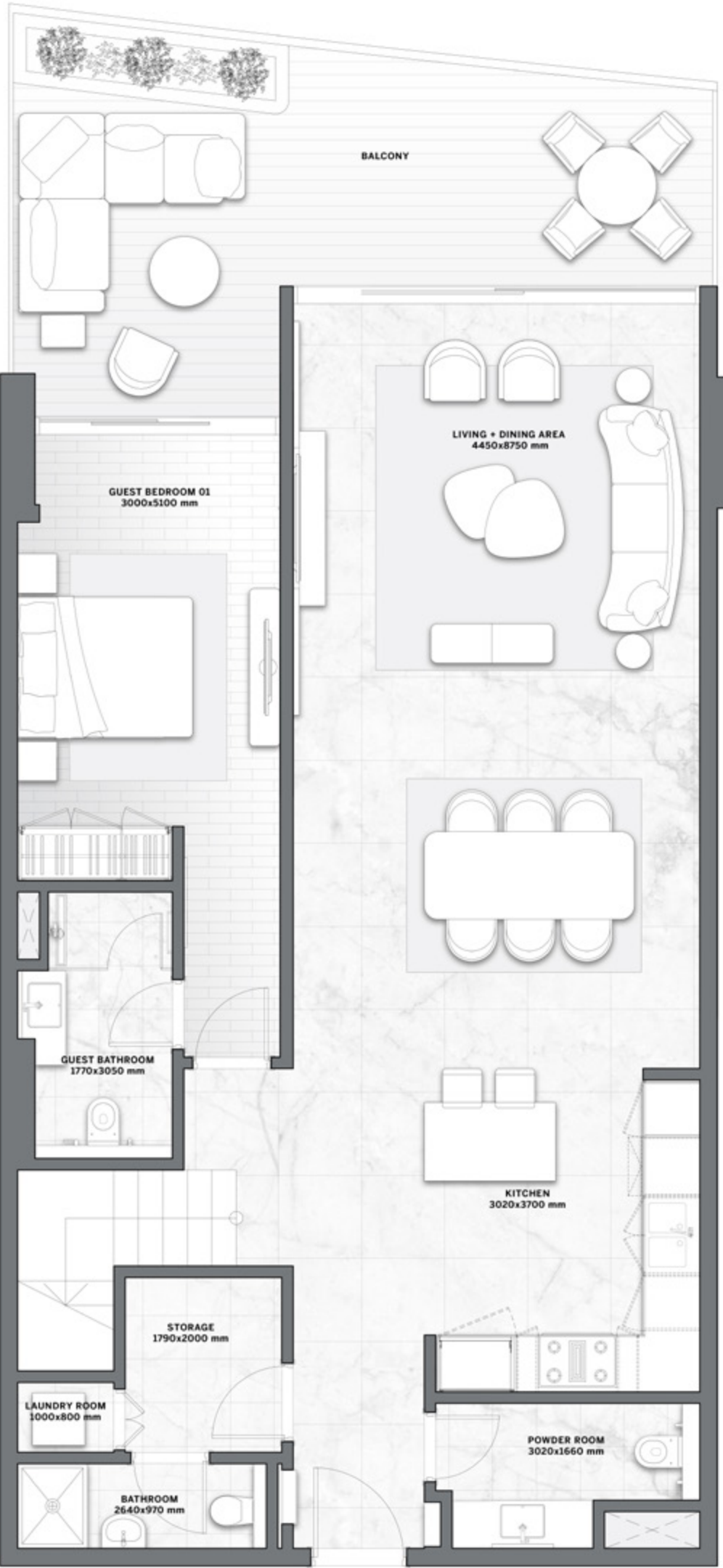
FLOORS  
6, 9, 15



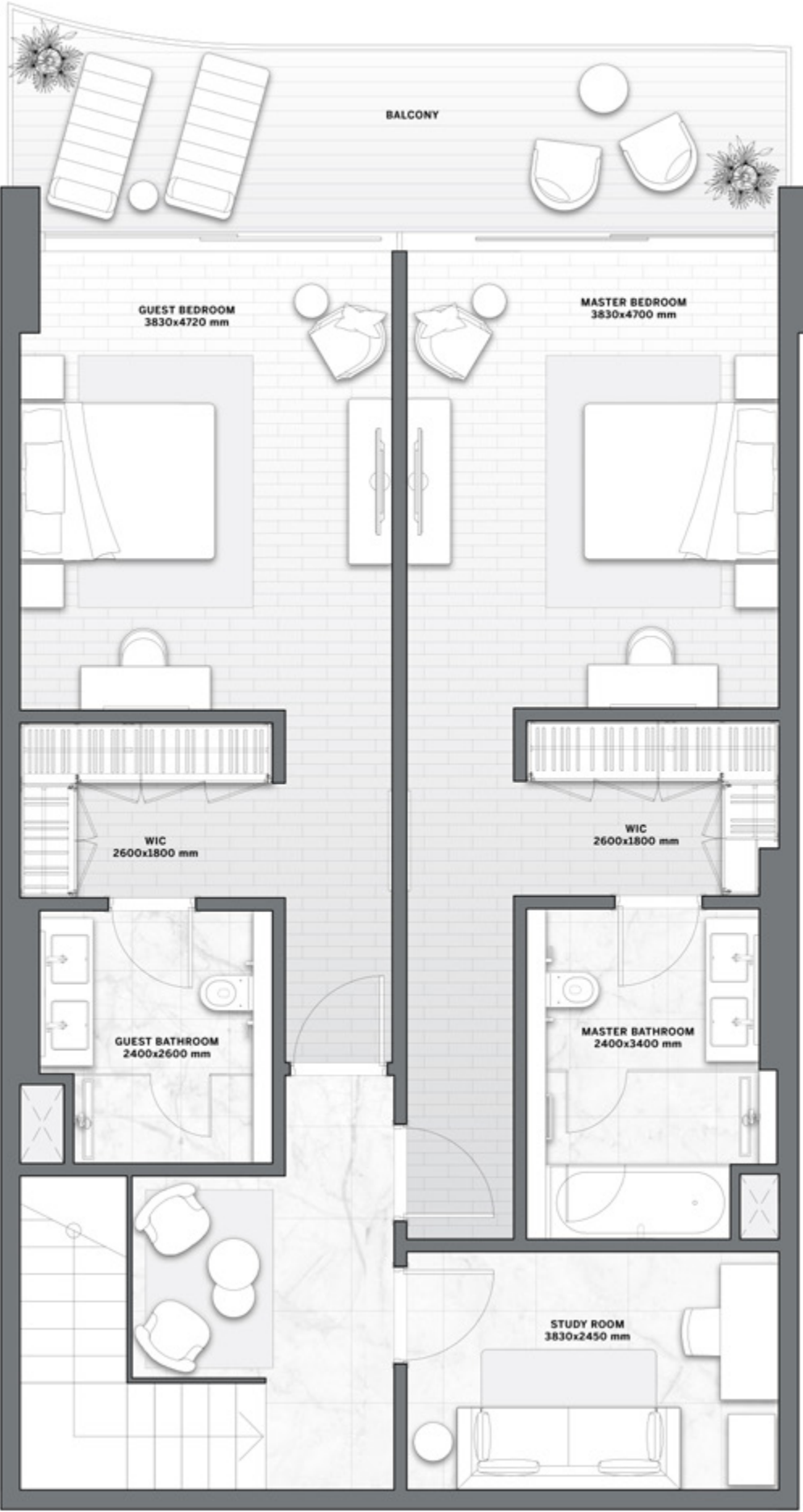
BEACH FRONT VIEW

RESIDENCE	SQM	SQFT
Internal Area	211	2,269
Balcony Area	41	440
Total Built up Area	252	2,709

Disclaimer: All pictures, plans, layouts, information, data and details included in this brochure are indicative only and may change at any time up to the final 'as built' status in accordance with final designs of the project, regulatory approvals and planning permissions. All accessories and interior finishes such as wallpaper, chandeliers, furniture, electronics, white goods, curtains, hard and soft landscaping, pavements, features, gym, and other elements displayed in the brochure, or between the plot boundary, are not part of the unit and are shown for illustrative purposes only.



LOWER LEVEL

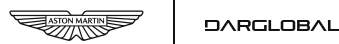


UPPER LEVEL



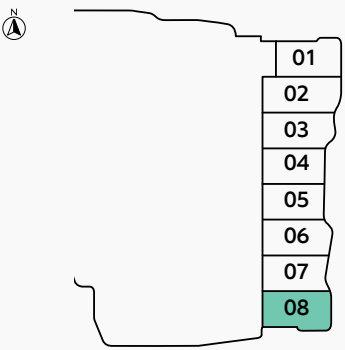
3 BEDROOMS  
VILLA TYPE D

The Astera  
INTERIORS BY ASTON MARTIN

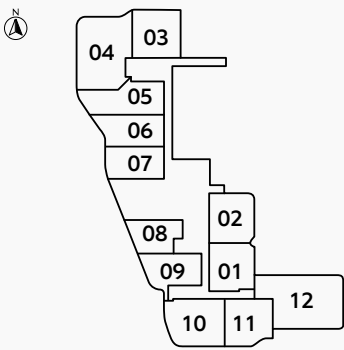


SEA & ISLAND VIEW

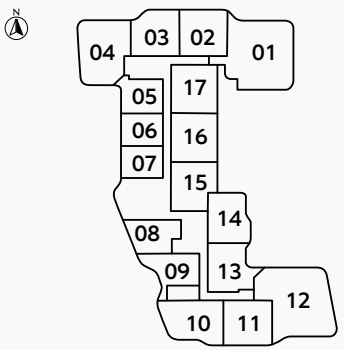
FLOOR  
GROUND



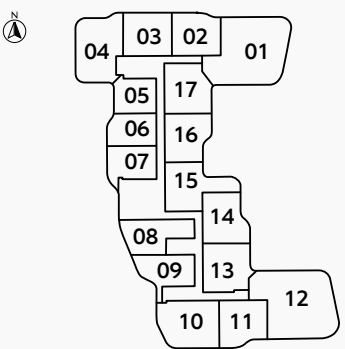
FLOOR  
2



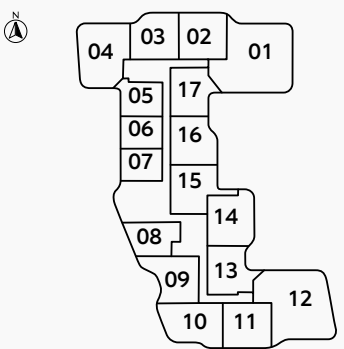
FLOOR  
3



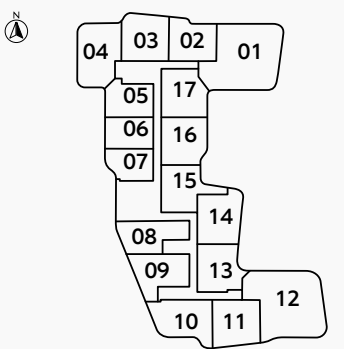
FLOORS  
4, 8, 11, 13, 16



FLOORS  
5, 7, 10, 12, 14



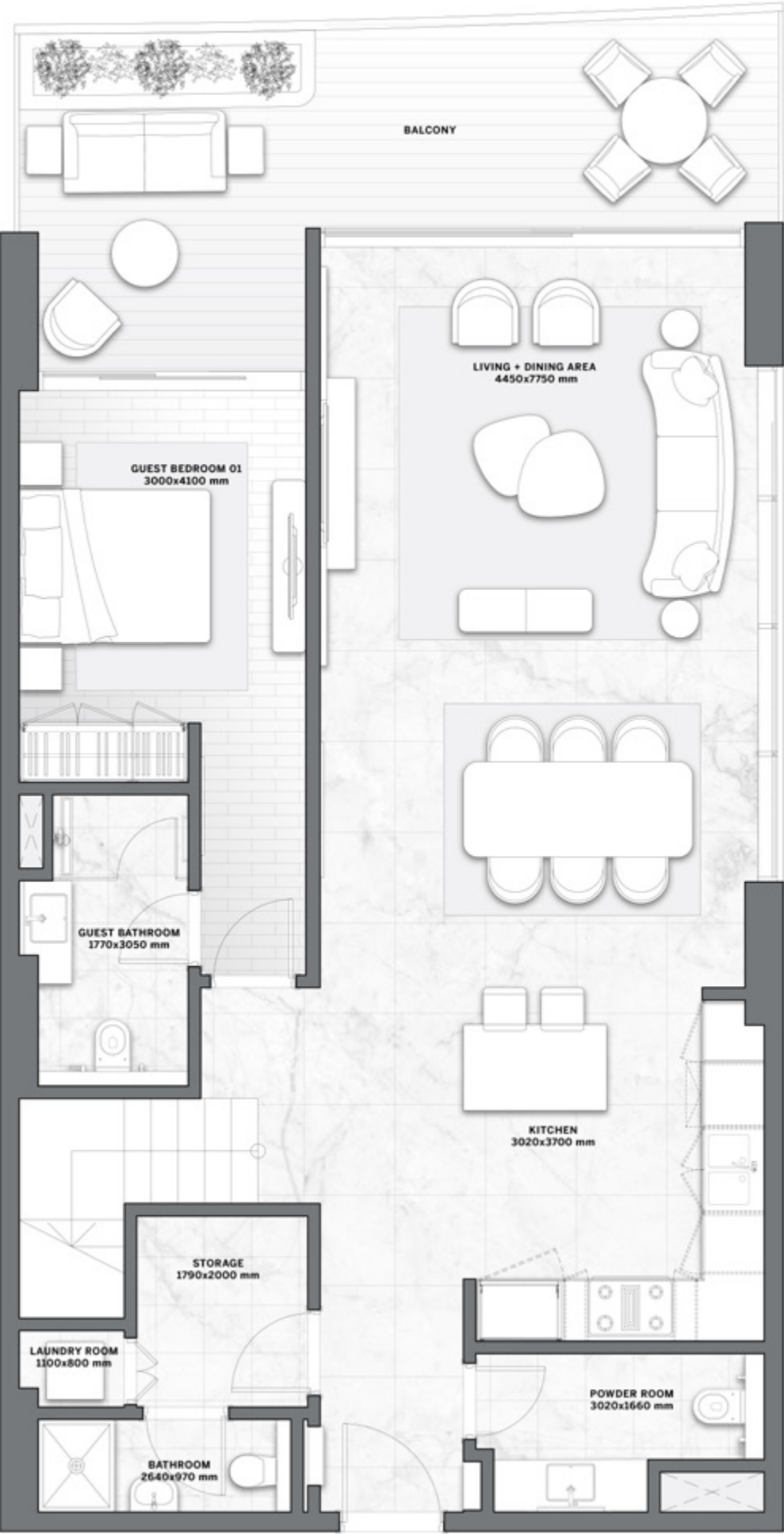
FLOORS  
6, 9, 15



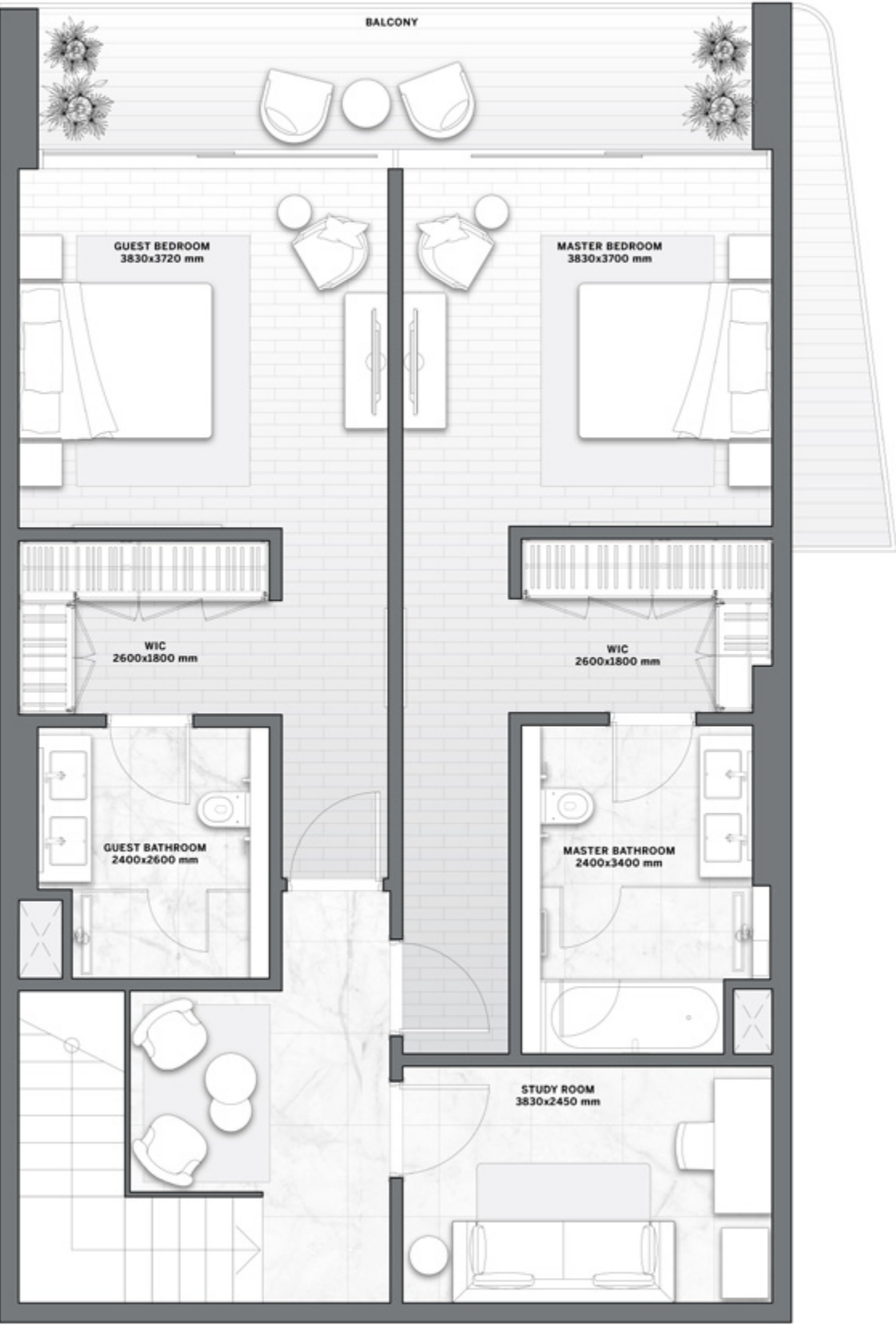
BEACH FRONT VIEW

RESIDENCE	SQM	SQFT
Internal Area	194	2,090
Balcony Area	34	364
Total Built up Area	228	2,455

Disclaimer: All pictures, plans, layouts, information, data and details included in this brochure are indicative only and may change at any time up to the final 'as built' status in accordance with final designs of the project, regulatory approvals and planning permissions. All accessories and interior finishes such as wallpaper, chandeliers, furniture, electronics, white goods, curtains, hard and soft landscaping, pavements, features, gym, and other elements displayed in the brochure, or between the plot boundary, are not part of the unit and are shown for illustrative purposes only.



LOWER LEVEL



UPPER LEVEL



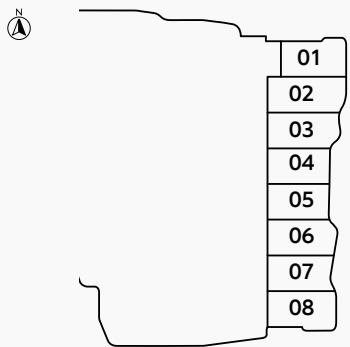
1 BEDROOM  
TYPE A

The Astera  
INTERIORS BY ASTON MARTIN

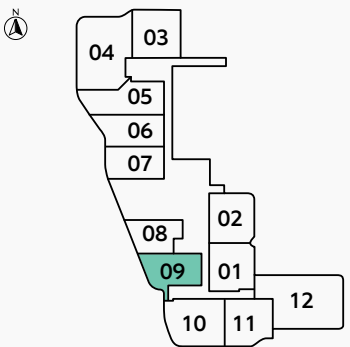


SEA & ISLAND VIEW

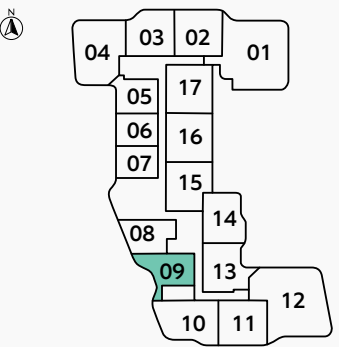
FLOOR  
GROUND



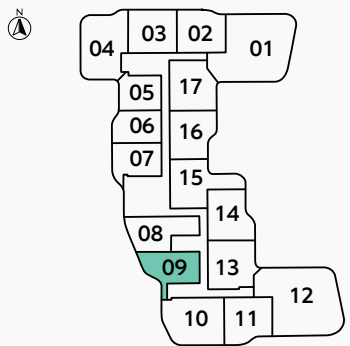
FLOOR  
2



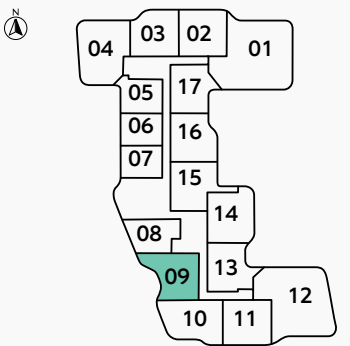
FLOOR  
3



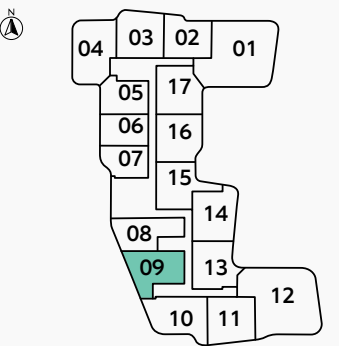
FLOORS  
4, 8, 11, 13, 16



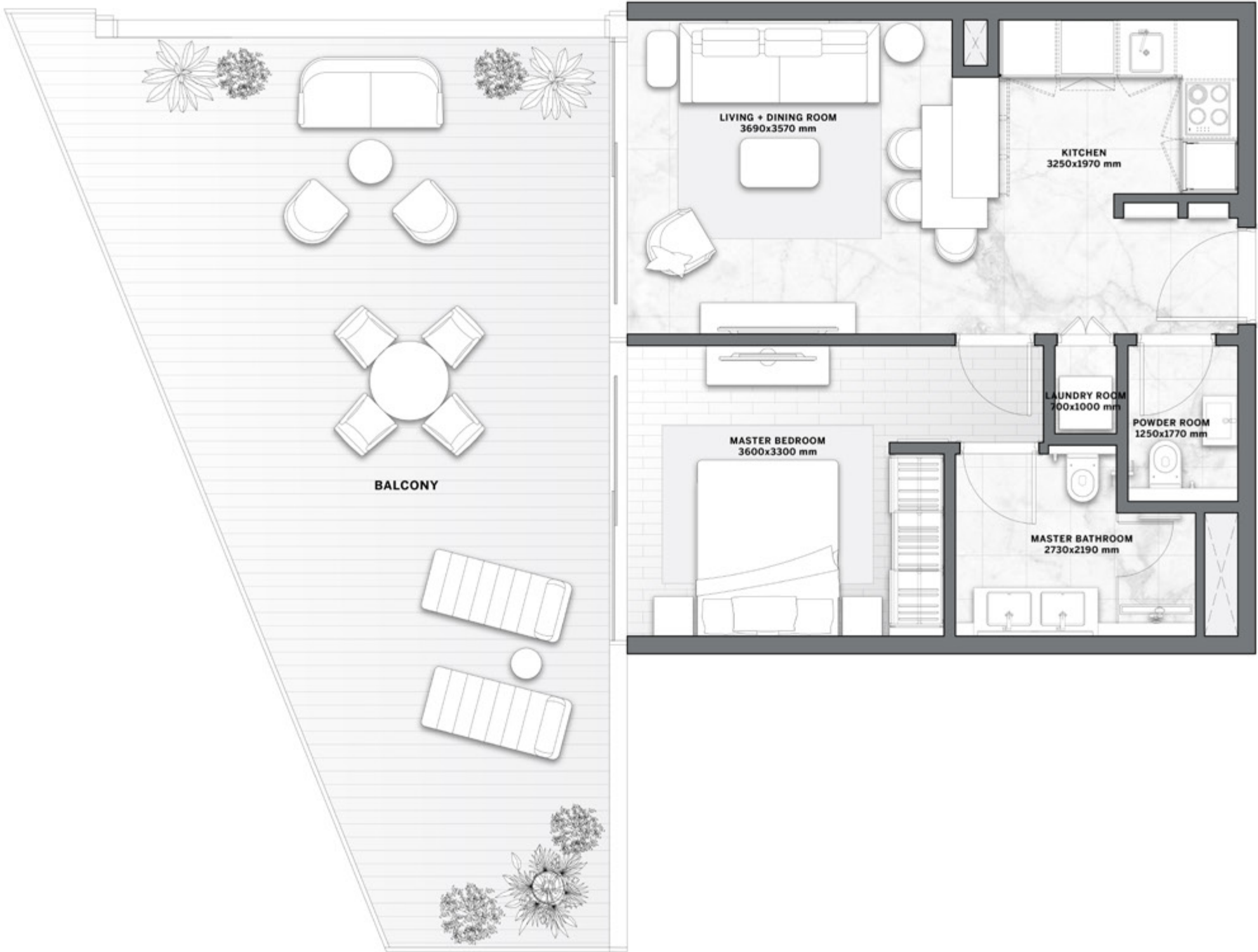
FLOORS  
5, 7, 10, 12, 14



FLOORS  
6, 9, 15



BEACH FRONT VIEW



RESIDENCE	SQM	SQFT
Internal Area	48	522
Balcony Area	34 - 52	372 - 564
Total Built up Area	83 - 101	894 - 1,087

Disclaimer: All pictures, plans, layouts, information, data and details included in this brochure are indicative only and may change at any time up to the final 'as built' status in accordance with final designs of the project, regulatory approvals and planning permissions. All accessories and interior finishes such as wallpaper, chandeliers, furniture, electronics, white goods, curtains, hard and soft landscaping, pavements, features, gym, and other elements displayed in the brochure, or between the plot boundary, are not part of the unit and are shown for illustrative purposes only.



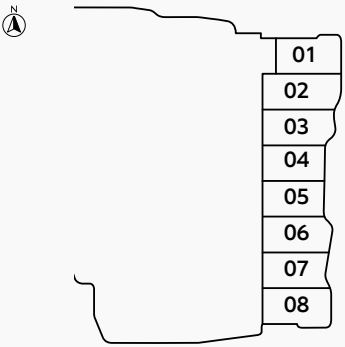
# 1 BEDROOM TYPE B

The Astera  
INTERIORS BY ASTON MARTIN

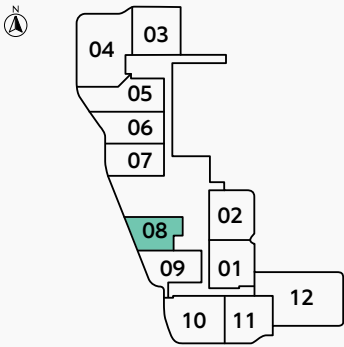


SEA & ISLAND VIEW

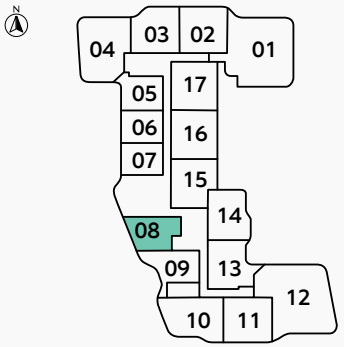
FLOOR  
GROUND



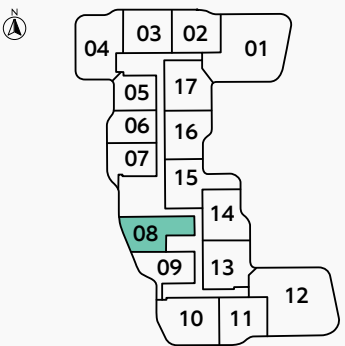
FLOOR  
2



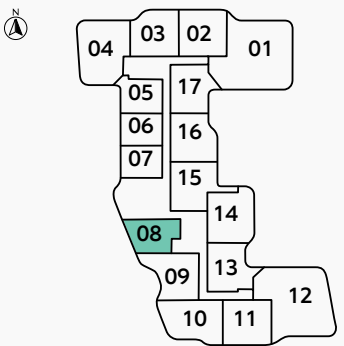
FLOOR  
3



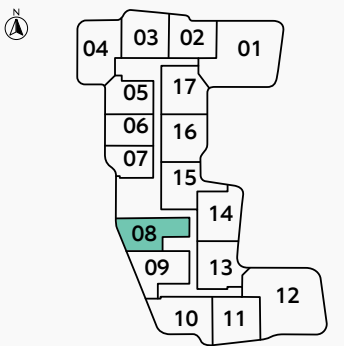
FLOORS  
4, 8, 11, 13, 16



FLOORS  
5, 7, 10, 12, 14



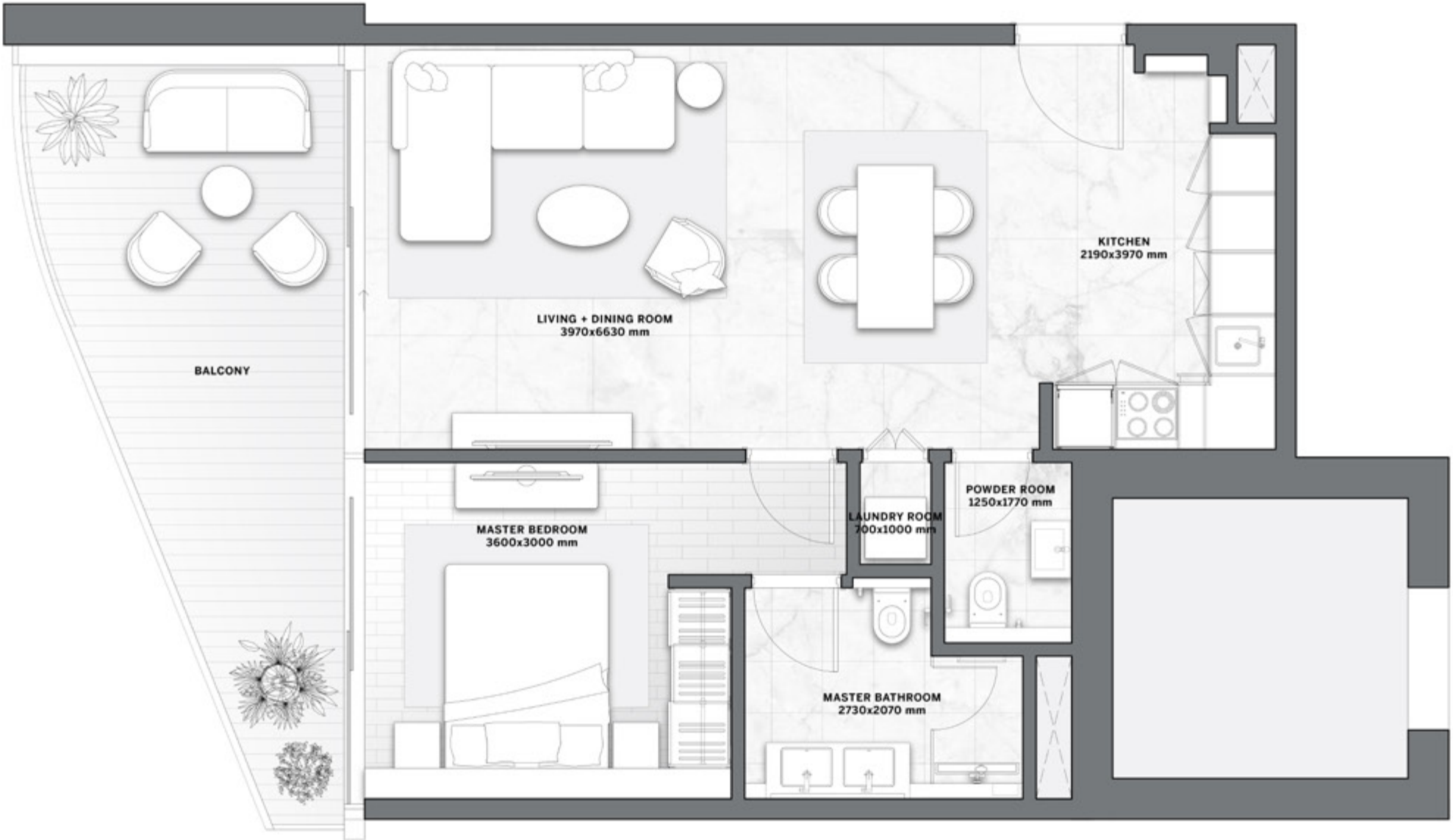
FLOORS  
6, 9, 15



BEACH FRONT VIEW

RESIDENCE	SQM	SQFT
Internal Area	58	623
Balcony Area	19 - 20	209 - 214
Total Built up Area	77 - 78	832 - 837

Disclaimer: All pictures, plans, layouts, information, data and details included in this brochure are indicative only and may change at any time up to the final 'as built' status in accordance with final designs of the project, regulatory approvals and planning permissions. All accessories and interior finishes such as wallpaper, chandeliers, furniture, electronics, white goods, curtains, hard and soft landscaping, pavements, features, gym, and other elements displayed in the brochure, or between the plot boundary, are not part of the unit and are shown for illustrative purposes only.





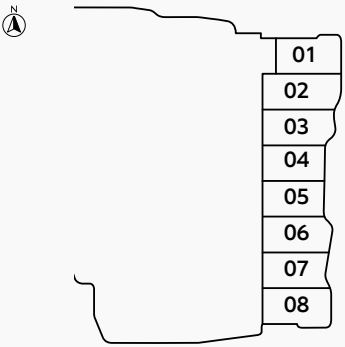
# 1 BEDROOM TYPE C

The Astera  
INTERIORS BY ASTON MARTIN

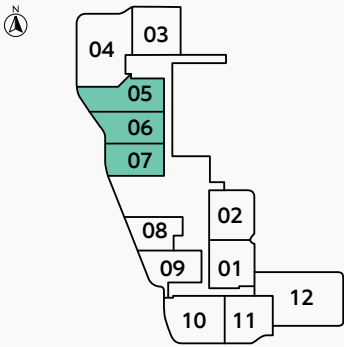


SEA & ISLAND VIEW

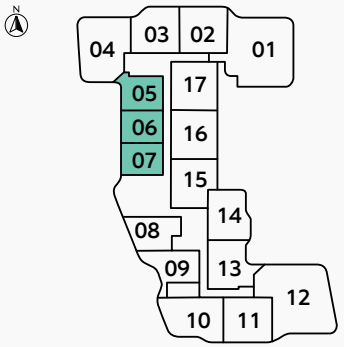
FLOOR  
GROUND



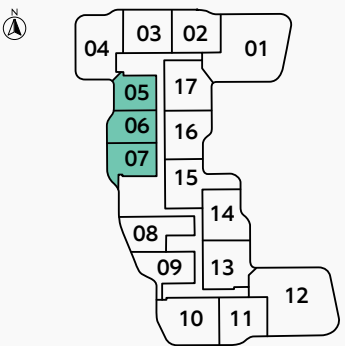
FLOOR  
2



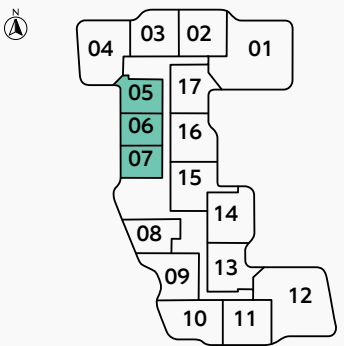
FLOOR  
3



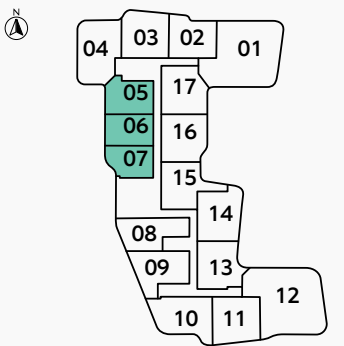
FLOORS  
4, 8, 11, 13, 16



FLOORS  
5, 7, 10, 12, 14

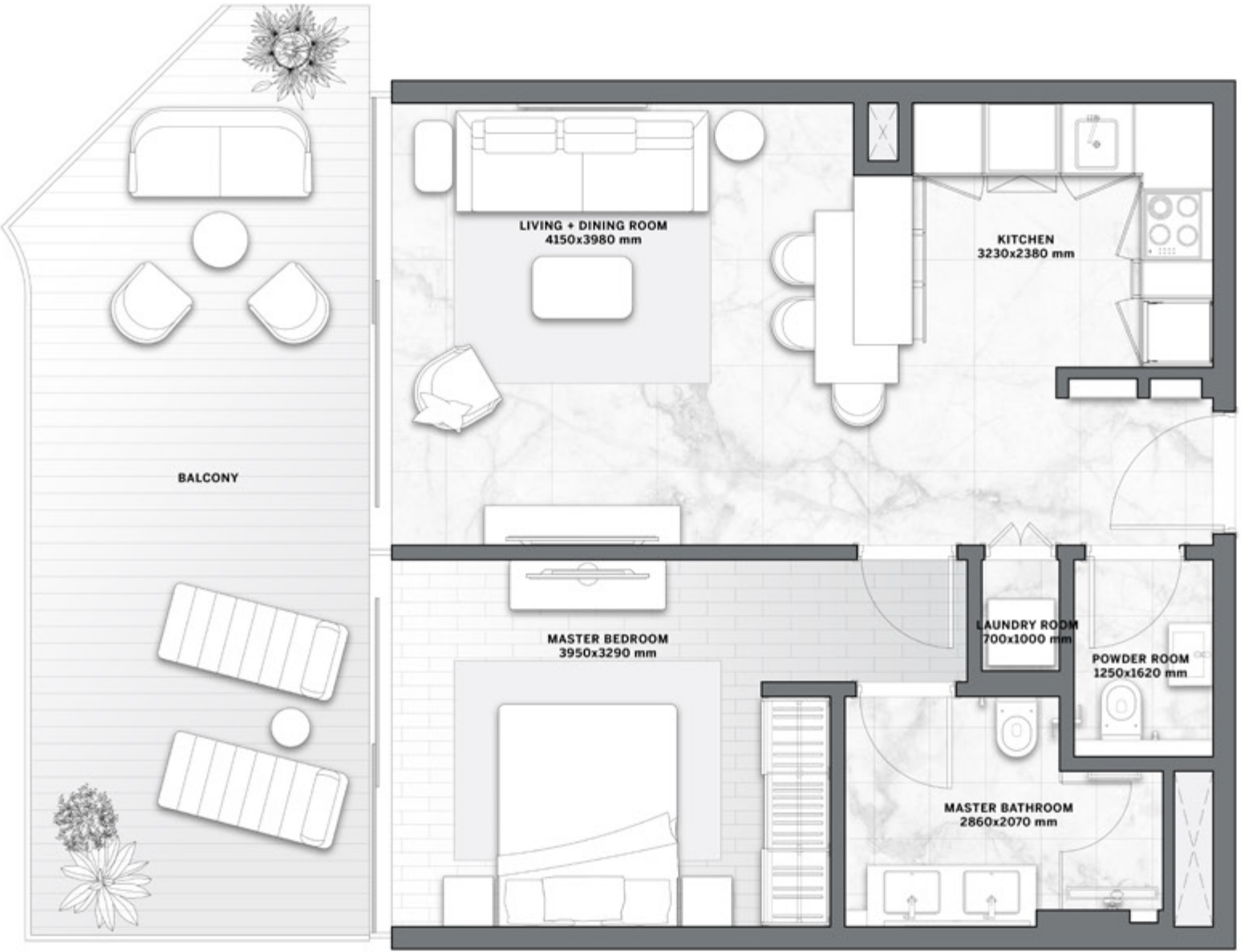


FLOORS  
6, 9, 15



BEACH FRONT VIEW

RESIDENCE	SQM	SQFT
Internal Area	52 - 55	562 - 595
Balcony Area	11 - 65	119 - 702
Total Built up Area	63 - 120	682 - 1,297



Disclaimer: All pictures, plans, layouts, information, data and details included in this brochure are indicative only and may change at any time up to the final 'as built' status in accordance with final designs of the project, regulatory approvals and planning permissions. All accessories and interior finishes such as wallpaper, chandeliers, furniture, electronics, white goods, curtains, hard and soft landscaping, pavements, features, gym, and other elements displayed in the brochure, or between the plot boundary, are not part of the unit and are shown for illustrative purposes only.



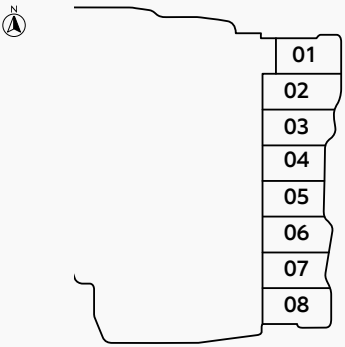
2 BEDROOMS  
TYPE A

The Astera  
INTERIORS BY ASTON MARTIN

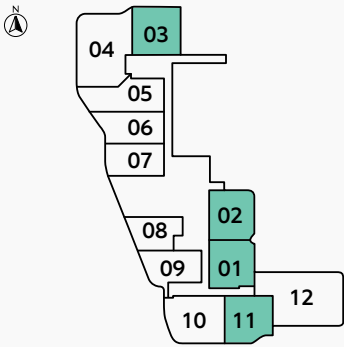


SEA & ISLAND VIEW

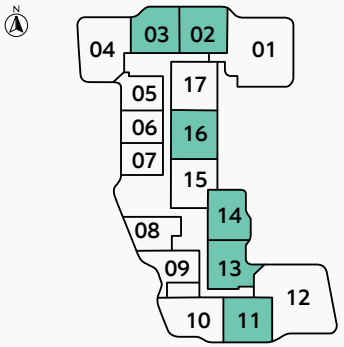
FLOOR  
GROUND



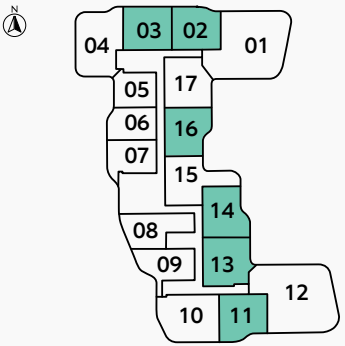
FLOOR  
2



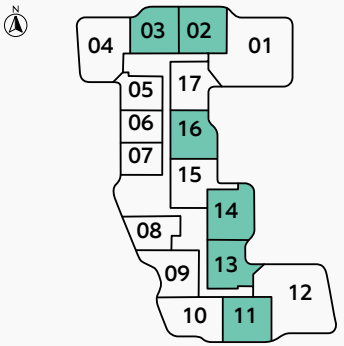
FLOOR  
3



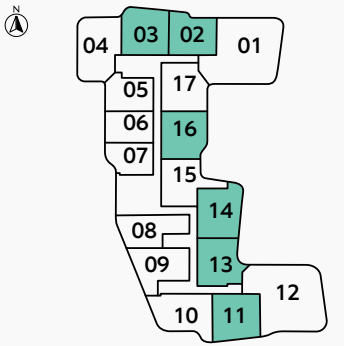
FLOORS  
4, 8, 11, 13, 16



FLOORS  
5, 7, 10, 12, 14

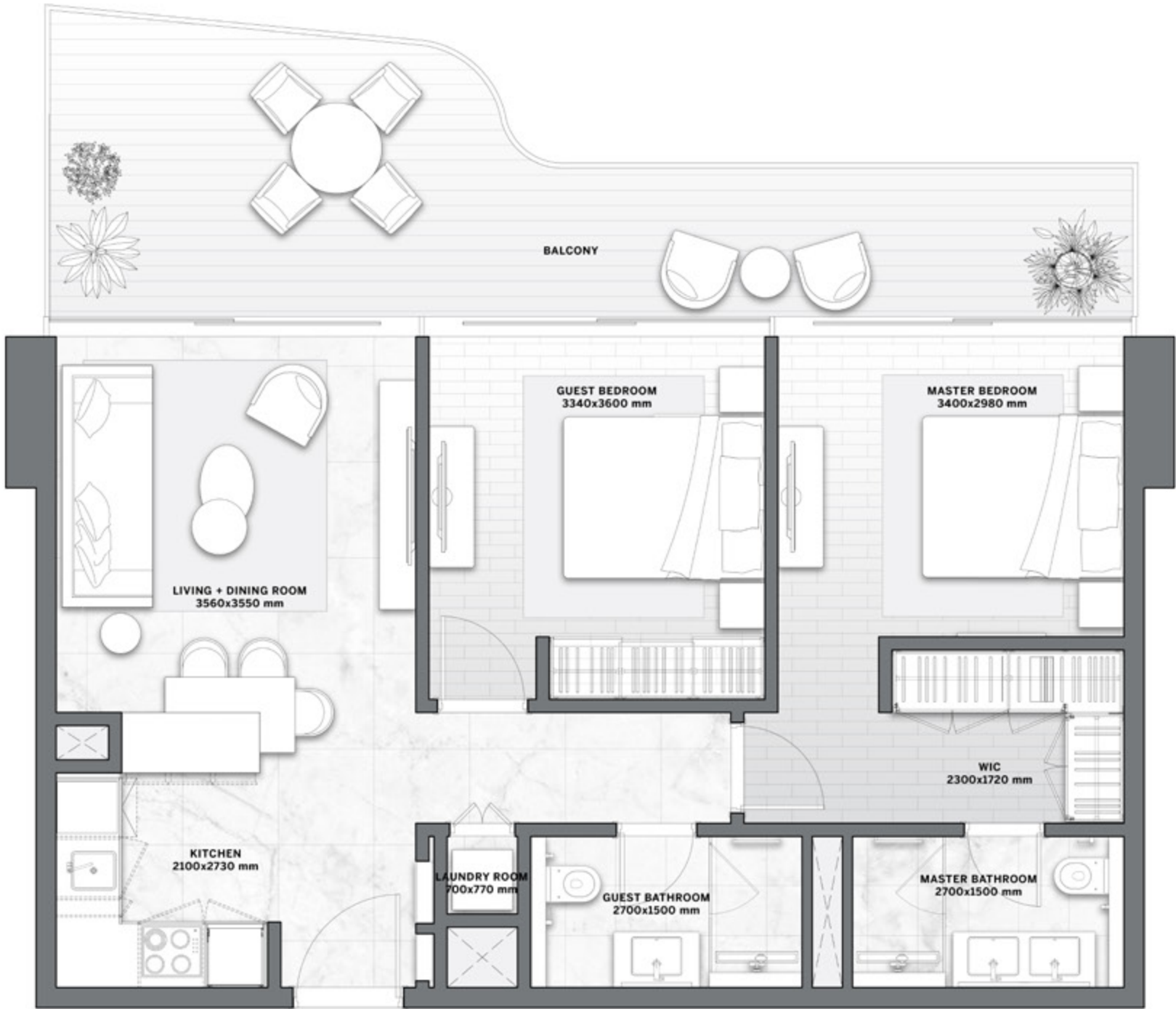


FLOORS  
6, 9, 15



BEACH FRONT VIEW

RESIDENCE	SQM	SQFT
Internal Area	68 - 73	733 - 786
Balcony Area	23 - 43	252 - 467
Total Built up Area	93 - 116	1,002 - 1,252



Disclaimer: All pictures, plans, layouts, information, data and details included in this brochure are indicative only and may change at any time up to the final 'as built' status in accordance with final designs of the project, regulatory approvals and planning permissions. All accessories and interior finishes such as wallpaper, chandeliers, furniture, electronics, white goods, curtains, hard and soft landscaping, pavements, features, gym, and other elements displayed in the brochure, or between the plot boundary, are not part of the unit and are shown for illustrative purposes only.



2 BEDROOMS  
TYPE B

The Astera  
INTERIORS BY ASTON MARTIN



RESIDENCE	SQM	SQFT
Internal Area	68	729
Balcony Area	23 - 34	252 - 369
Total Built up Area	91 - 102	981 - 1,098

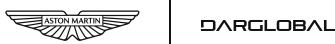
Disclaimer: All pictures, plans, layouts, information, data and details included in this brochure are indicative only and may change at any time up to the final 'as built' status in accordance with final designs of the project, regulatory approvals and planning permissions. All accessories and interior finishes such as wallpaper, chandeliers, furniture, electronics, white goods, curtains, hard and soft landscaping, pavements, features, gym, and other elements displayed in the brochure, or between the plot boundary, are not part of the unit and are shown for illustrative purposes only.





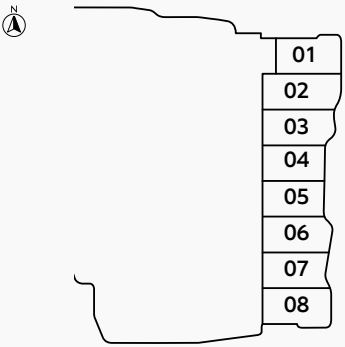
2 BEDROOMS  
TYPE C

The Astera  
INTERIORS BY ASTON MARTIN

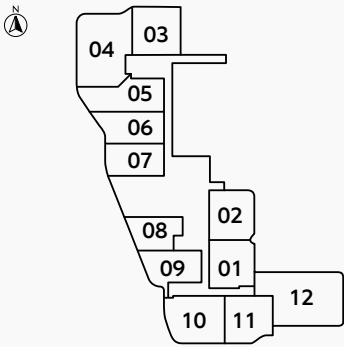


SEA & ISLAND VIEW

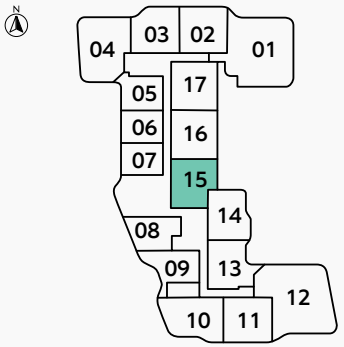
FLOOR  
GROUND



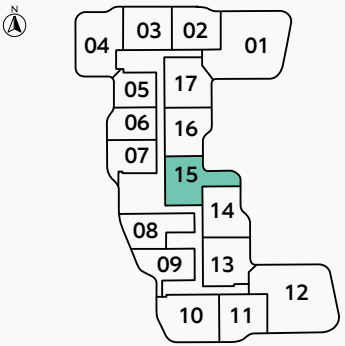
FLOOR  
2



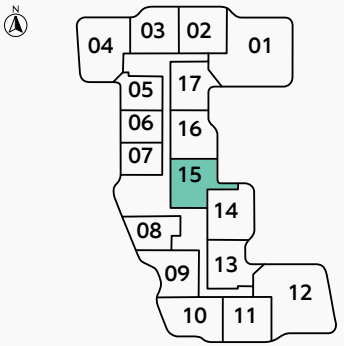
FLOOR  
3



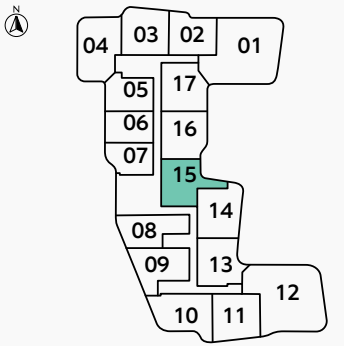
FLOORS  
4, 8, 11, 13, 16



FLOORS  
5, 7, 10, 12, 14



FLOORS  
6, 9, 15



BEACH FRONT VIEW

RESIDENCE	SQM	SQFT
Internal Area	68 - 75	736 - 810
Balcony Area	24 - 37	260 - 397
Total Built up Area	99 - 111	1,062 - 1,197

Disclaimer: All pictures, plans, layouts, information, data and details included in this brochure are indicative only and may change at any time up to the final 'as built' status in accordance with final designs of the project, regulatory approvals and planning permissions. All accessories and interior finishes such as wallpaper, chandeliers, furniture, electronics, white goods, curtains, hard and soft landscaping, pavements, features, gym, and other elements displayed in the brochure, or between the plot boundary, are not part of the unit and are shown for illustrative purposes only.





# 2 BEDROOMS

## TYPE D

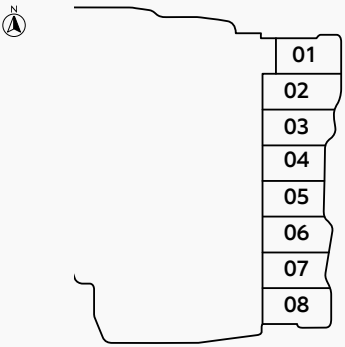
The Astera

INTERIORS BY ASTON MARTIN

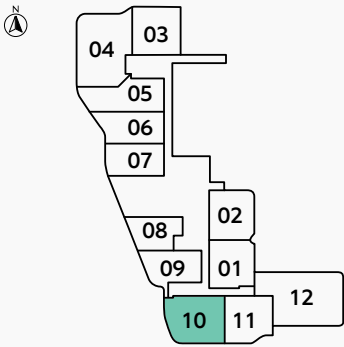


SEA & ISLAND VIEW

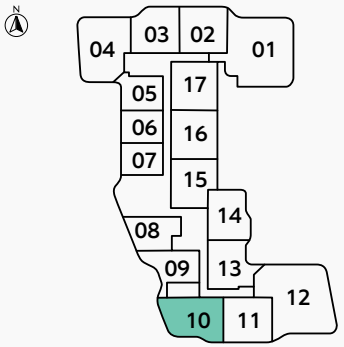
FLOOR  
GROUND



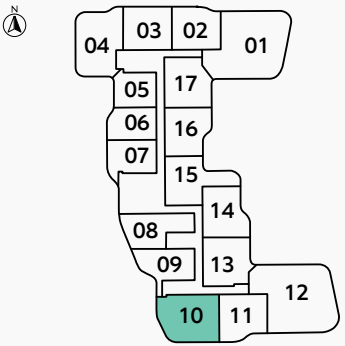
FLOOR  
2



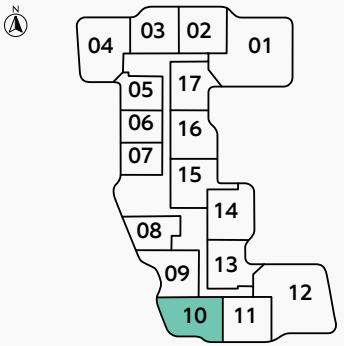
FLOOR  
3



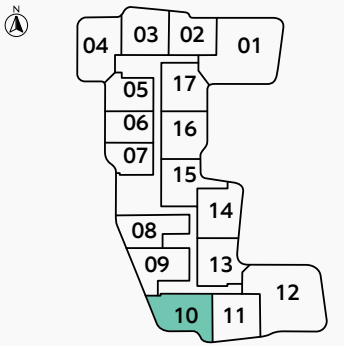
FLOORS  
4, 8, 11, 13, 16



FLOORS  
5, 7, 10, 12, 14



FLOORS  
6, 9, 15



BEACH FRONT VIEW

RESIDENCE	SQM	SQFT
Internal Area	73	787
Balcony Area	42 - 56	459 - 607
Total Built up Area	116 - 129	1,246 - 1,394

Disclaimer: All pictures, plans, layouts, information, data and details included in this brochure are indicative only and may change at any time up to the final 'as built' status in accordance with final designs of the project, regulatory approvals and planning permissions. All accessories and interior finishes such as wallpaper, chandeliers, furniture, electronics, white goods, curtains, hard and soft landscaping, pavements, features, gym, and other elements displayed in the brochure, or between the plot boundary, are not part of the unit and are shown for illustrative purposes only.





# 2 BEDROOMS

## TYPE E

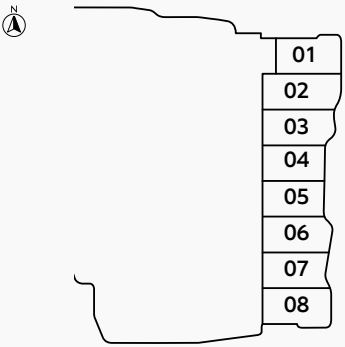
The Astera

INTERIORS BY ASTON MARTIN

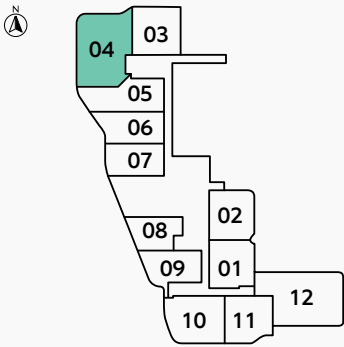


SEA & ISLAND VIEW

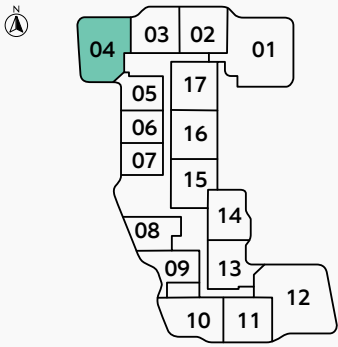
FLOOR  
GROUND



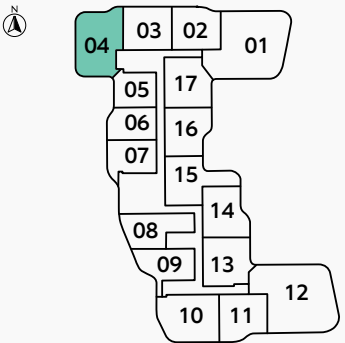
FLOOR  
2



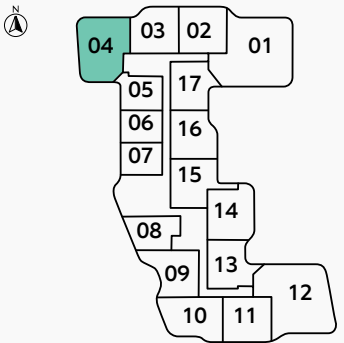
FLOOR  
3



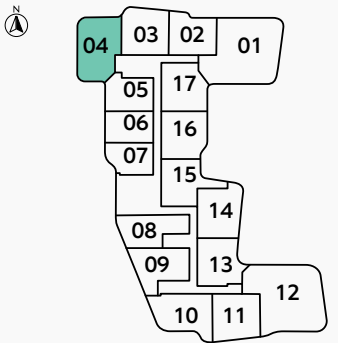
FLOORS  
4, 8, 11, 13, 16



FLOORS  
5, 7, 10, 12, 14



FLOORS  
6, 9, 15



BEACH FRONT VIEW

RESIDENCE	SQM	SQFT
Internal Area	76	820
Balcony Area	50 - 61	539 - 659
Total Built up Area	126 - 182	1,359 - 1,479

Disclaimer: All pictures, plans, layouts, information, data and details included in this brochure are indicative only and may change at any time up to the final 'as built' status in accordance with final designs of the project, regulatory approvals and planning permissions. All accessories and interior finishes such as wallpaper, chandeliers, furniture, electronics, white goods, curtains, hard and soft landscaping, pavements, features, gym, and other elements displayed in the brochure, or between the plot boundary, are not part of the unit and are shown for illustrative purposes only.





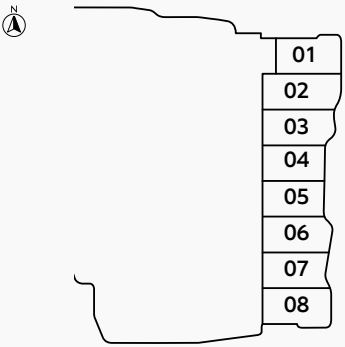
# 3 BEDROOMS TYPE A

The Astera  
INTERIORS BY ASTON MARTIN

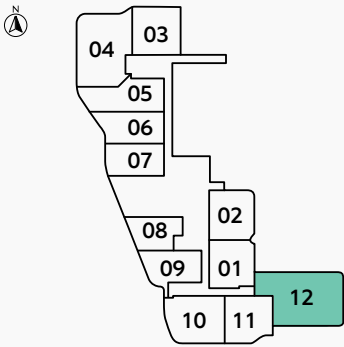


SEA & ISLAND VIEW

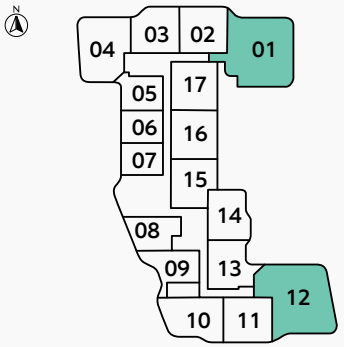
FLOOR  
GROUND



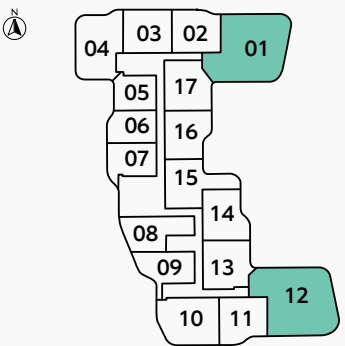
FLOOR  
2



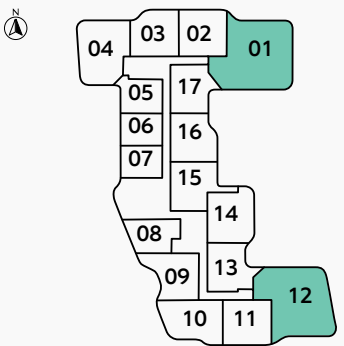
FLOOR  
3



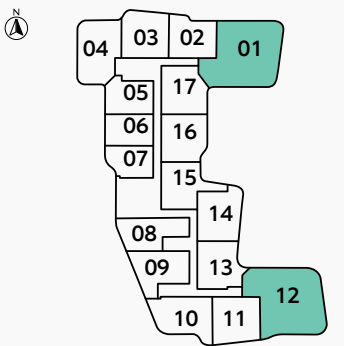
FLOORS  
4, 8, 11, 13, 16



FLOORS  
5, 7, 10, 12, 14



FLOORS  
6, 9, 15



BEACH FRONT VIEW

RESIDENCE	SQM	SQFT
Internal Area	136-140	1,466 - 1,508
Balcony Area	89 - 117	961 - 1,264
Total Built up Area	227 - 254	2,443 - 2,730

Disclaimer: All pictures, plans, layouts, information, data and details included in this brochure are indicative only and may change at any time up to the final 'as built' status in accordance with final designs of the project, regulatory approvals and planning permissions. All accessories and interior finishes such as wallpaper, chandeliers, furniture, electronics, white goods, curtains, hard and soft landscaping, pavements, features, gym, and other elements displayed in the brochure, or between the plot boundary, are not part of the unit and are shown for illustrative purposes only.





DAR GLOBAL PLC

DARGLOBAL

LISTED ON THE  
LONDON STOCK EXCHANGE

Established in 2017 to upend the global luxury real estate market, DarGlobal combines experience and innovation to deliver the highest quality properties. World-class architects curate DarGlobal’s homes that are modelled by renowned design icons; each DarGlobal home is build with the highest quality materials and maintained by experts within the field.

DarGlobal believes there is no better investment than an investment in luxury and takes pride in choosing the best-in-class locations and properties to provide lucrative investment opportunities for a distinct clientele.

BUILDING ON THE LEGACY OF  
THE LARGEST REAL ESTATE  
COMPANY IN THE REGION

09

offices in different  
cities worldwide

30

years of  
experience

15,000+

residential units  
delivered

8.9Bn\*

USD in  
assets

500,000sqm

of commercial space

\*Combined assets of DarGlobal & Dar Al Arkan as of March 31, 2024



OUR OFFICES

DARGLOBAL

DUBAI, UAE

Jumeirah Emirates Towers  
30<sup>th</sup> Floor, Sheikh Zayed Road,  
PO Box 2523, Dubai,  
United Arab Emirates  
T +971 4 247 8999

MARBELLA, SPAIN

Marbella Club Golden Mile,  
Av. Bulevar Principe Alfonso  
de Hohenlohe, Marbella 29602  
Málaga, Spain  
T +34 952 68 76 80

LONDON, UK

50 Hans Crescent,  
Knightsbridge, London,  
SW1X 0NA,  
United Kingdom  
T +44 7875 495156

DOHA, QATAR

Malibu Building,  
Lusail Entertainment City,  
Doha, Qatar  
T +974 800 3536

MUSCAT, OMAN

Royal Opera House Muscat  
Shatti Al Qurum,  
Oman, Muscat  
T +968 2270 2777

For more information on The Astera, Interiors by Aston Martin  
please call +971 4562 9616 (UAE)

You can visit our website at [darglobal.co.uk](https://darglobal.co.uk)  
or via our social media platforms





DARGLOBAL

Joint Development Partner



ABOUT AARVEES

Aarvees, established in 1994, has been a pioneer in transforming Dubai’s skyline. Specializing in real estate development, entertainment, logistics, and hospitality, Aarvees is committed to delivering world-class projects that enhance the quality of life and foster sustainable growth. The company integrates innovative solutions and maintains the highest standards of integrity and customer satisfaction. Through strategic partnerships and a visionary approach, Aarvees continuously shapes the future of the UAE, reflecting its dedication to excellence and community development.









DARGLOBAL

Joint Development Partner



ARVEES

[DARGLOBAL.CO.UK](http://DARGLOBAL.CO.UK)